



# **Tuberculosis Country Profile 2021 Thailand**

*Source: Global tuberculosis report 2021. Geneva: World Health Organization*

*Disclaimer: Tuberculosis country profiles are generated automatically based on data reported by countries and which are held in WHO's global TB database.*

# Tuberculosis profile: Thailand

Population 2020: 70 million

## Estimates of TB burden\*, 2020

	Number	(Rate per 100 000 population)
Total TB incidence	105 000 (79 000-134 000)	150 (113-192)
HIV-positive TB incidence	9 900 (7 400-13 000)	14 (11-18)
HIV-negative TB mortality	10 000 (7 200-13 000)	14 (10-19)
HIV-positive TB mortality	2 000 (1 400-2 700)	2.9 (2.1-3.9)

## Universal health coverage and social protection\*

TB treatment coverage (notified/estimated incidence), 2020	82% (64-110)
TB patients facing catastrophic total costs, 2020	31% (27-35)
TB case fatality ratio (estimated mortality/estimated incidence), 2020	12% (7-17)

## TB case notifications, 2020

Total new and relapse	85 837
- % tested with rapid diagnostics at time of diagnosis	38%
- % with known HIV status	82%
- % pulmonary	85%
- % bacteriologically confirmed <sup>^</sup>	63%
- % children aged 0-14 years	1%
- % women (aged ≥15 years)	32%
- % men (aged ≥15 years)	67%
Total cases notified	87 525

## TB/HIV care in new and relapse TB patients, 2020

	Number	(%)
Patients with known HIV status who are HIV-positive	6 631	9.4%
- on antiretroviral therapy	5 560	84%

## Drug-resistant TB care\*\*, 2020

% of bacteriologically confirmed TB cases tested for rifampicin resistance - New cases <sup>^</sup>	71%
% of bacteriologically confirmed TB cases tested for rifampicin resistance - Previously treated cases <sup>^</sup>	83%
Laboratory-confirmed cases - MDR/RR-TB <sup>^^</sup>	1 302
Patients started on treatment - MDR/RR-TB <sup>^^</sup>	1 204
Laboratory-confirmed cases - pre-XDR-TB or XDR-TB <sup>^^</sup>	65
Patients started on treatment - pre-XDR-TB or XDR-TB <sup>^^</sup>	62
MDR/RR-TB cases tested for resistance to any fluoroquinolone	638

## Treatment success rate and cohort size

	Success	Cohort
New and relapse cases registered in 2019	85%	87 083
Previously treated cases, excluding relapse, registered in 2019	63%	1 655
HIV-positive TB cases registered in 2019	75%	6 694
MDR/RR-TB cases started on second-line treatment in 2018	63%	910
XDR-TB cases started on second-line treatment in 2018	81%	21

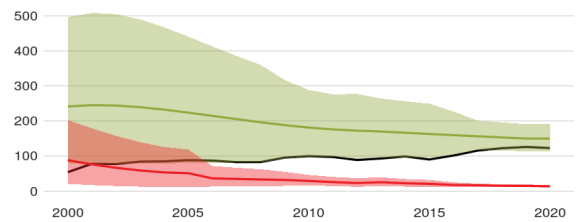
## TB preventive treatment, 2020

% of HIV-positive people (newly enrolled in care) on preventive treatment	
% of children (aged < 5 years) household contacts of bacteriologically-confirmed TB cases on preventive treatment	84% (77-92)

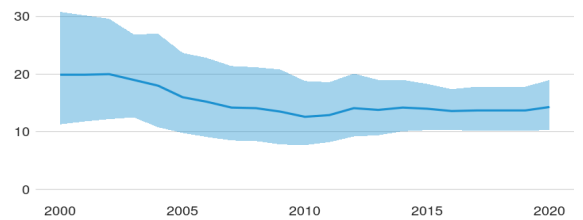
## TB financing

National TB budget, 2021 (US\$ millions)	30
- Funding source, domestic	82%
- Funding source, international	18%
- unfunded	0%

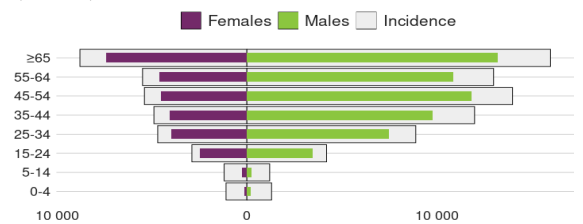
## Incidence, New and relapse TB cases notified, HIV-positive TB incidence (Rate per 100 000 population per year)



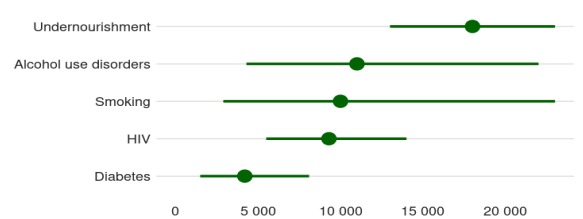
## HIV-negative TB mortality (Rate per 100 000 population per year)



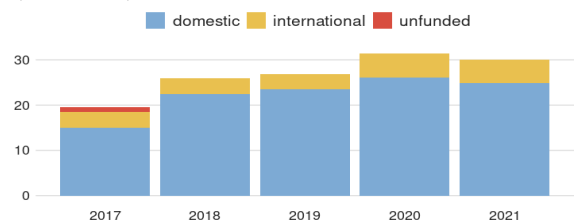
## Incidence, Notified cases by age group and sex, 2020 (Number)



## Cases attributable to five risk factors, 2020 (Number)



## Total budget (US\$ millions)



\* Estimates of TB burden are produced by WHO in consultation with countries. Ranges represent uncertainty intervals.  
 \*\* RR is TB resistant to rifampicin (R); MDR is TB resistant to R + isoniazid; pre-XDR is TB resistant to R + any fluoroquinolone  
<sup>^</sup> Calculated for pulmonary cases only  
<sup>^^</sup> Includes cases with unknown previous TB treatment history  
<sup>^^^</sup> Includes patients diagnosed before 2020 and patients who were not laboratory-confirmed