

SNAPSHOT OF HIV & AIDS IN MALAYSIA 2013



www.mac.org.my

Malaysian AIDS Council
Malaysian AIDS Foundation

OVERVIEW OF THE HIV & AIDS EPIDEMIC IN MALAYSIA

101,672
Total reported HIV
(Dec 2013)

20,235
Total reported AIDS
(Dec 2013)

16,340
Total reported AIDS
related deaths
(Dec 2013)

85,332
Total people living
with HIV
(Dec 2013)

3,393
New HIV infections
reported in 2013

11.42
HIV notification
rate in 2013
(per 100,000)

728
New HIV infections
in women reported
in 2013

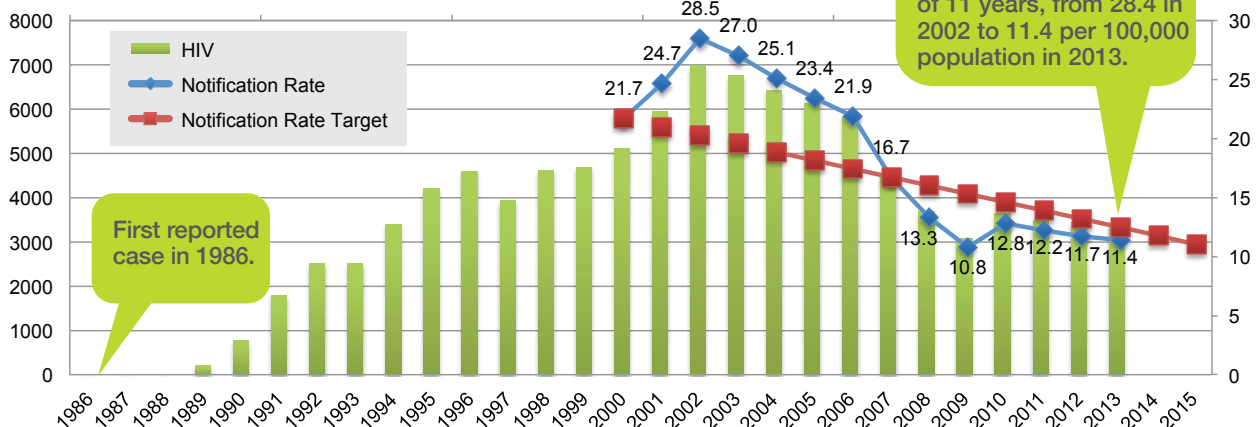
10,956
Total reported HIV
in women
(Dec 2013)

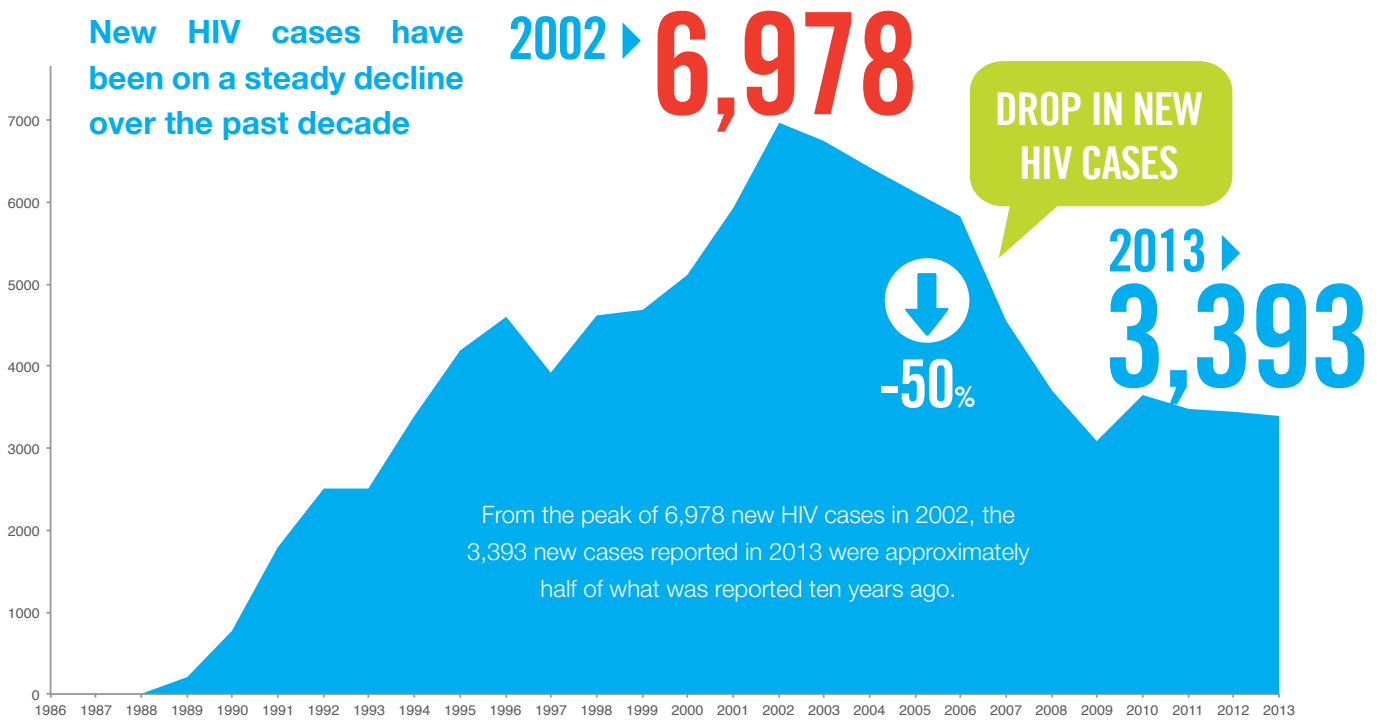
50
New HIV infections
in children (<13 years)
reported in 2013

1,076
Total reported HIV
in children (<13 years)
(Dec 2013)

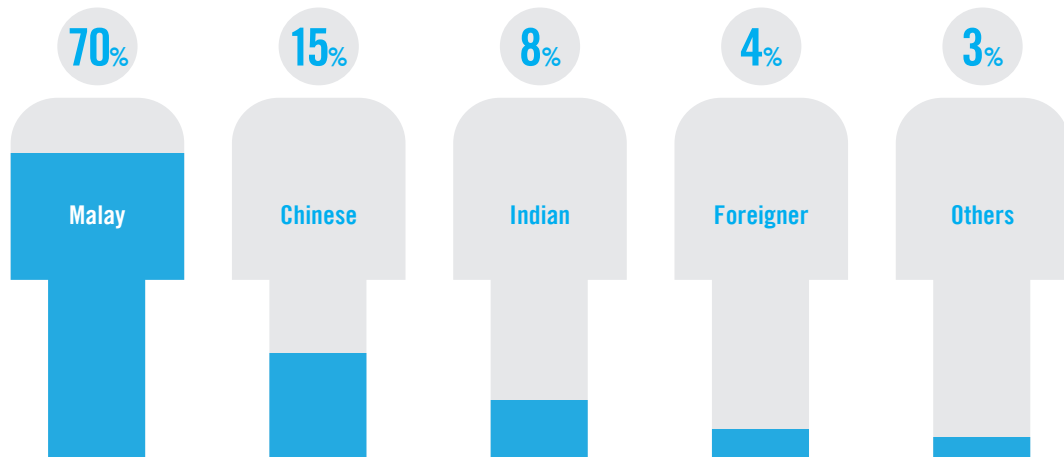
73,005
[0.44%]
Estimated adult
(15-49 years) HIV
prevalence [EPP 2014]

New HIV Cases (1986-2013)

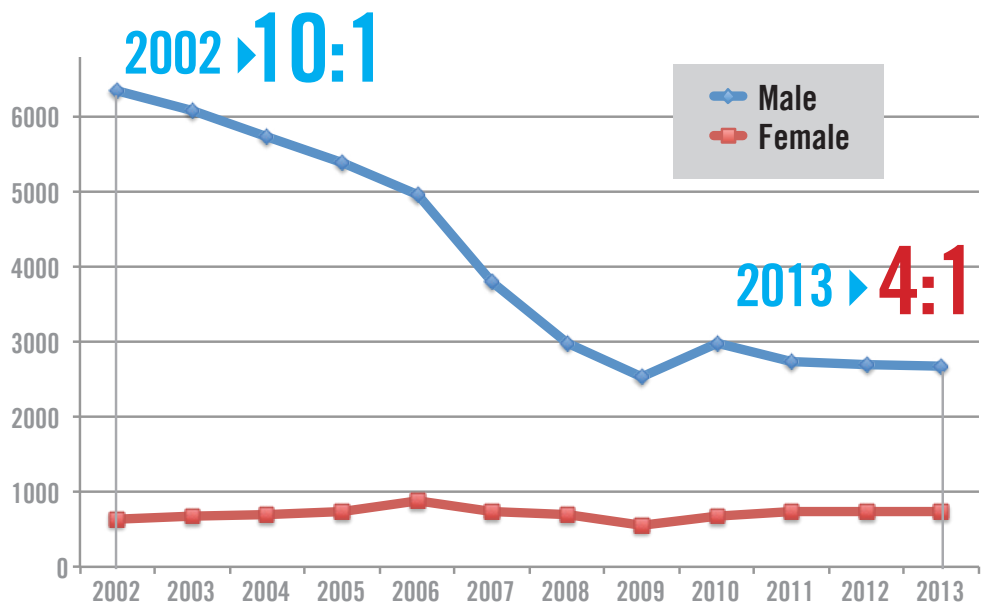




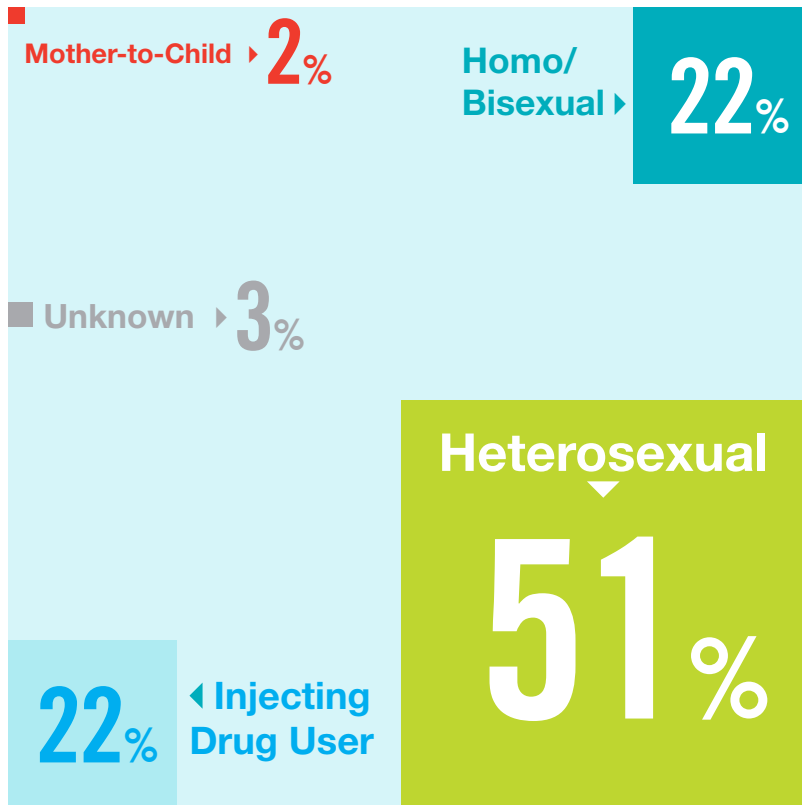
Percentage of HIV Infection by Ethnicity (1986-2013)



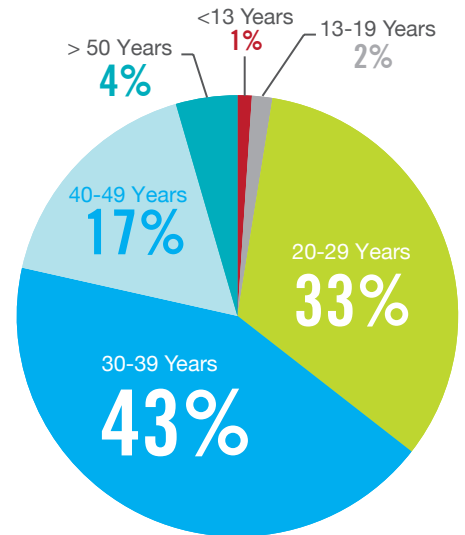
Males account for 90% of the cases but the epidemic began shifting its trend as shown by the male:female ratio of 10:1 in 2002 to 4:1 (2013)



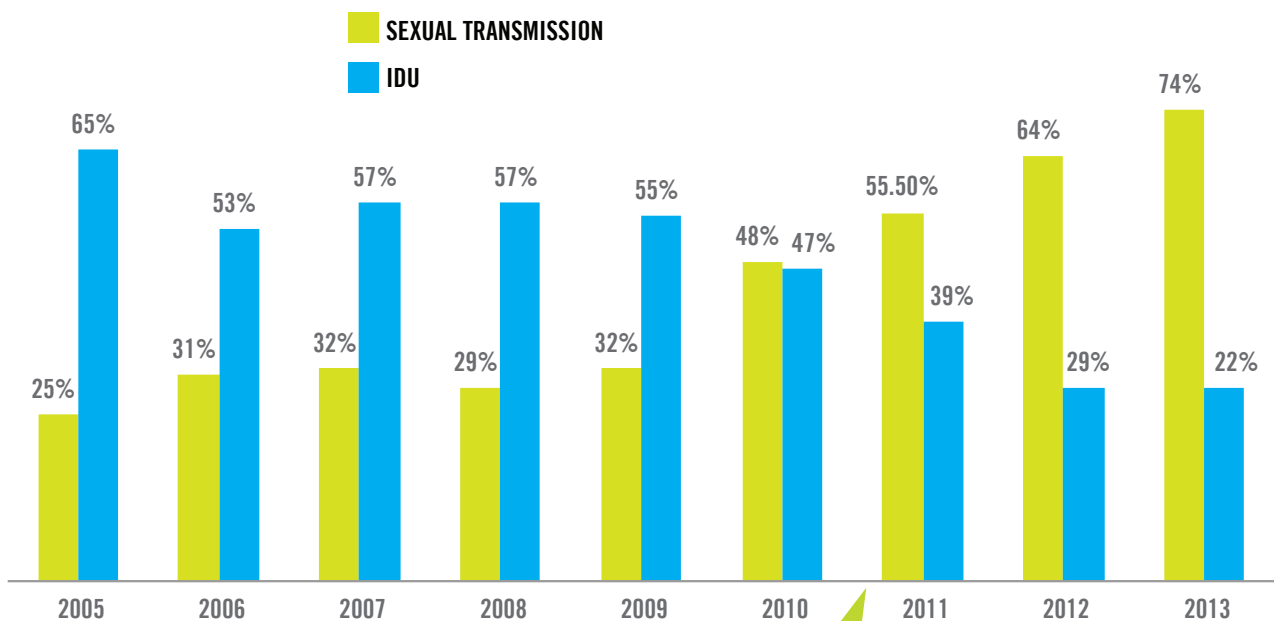
HIV Transmission by Risk Factor in 2013



Percentage of HIV Infection by Age Group (1986-2013)



Comparison of New HIV Infections between Injecting Drug Users (IDU) & Sexual Transmission (2005-2013)



Shifting Trend

The HIV epidemic is now experiencing a shift in the trend of transmission – from one that was predominantly ‘driven’ by transmission via the drug injecting route to a sexually acquired one.

Reported New HIV Cases in Malaysia 1986-2013 (National AIDS Surveillance System)

Indicator		1986	1987	1988	1989	1990	1991	1992	1993	1994	1995	1996	1997	1998	1999	2000	2001	2002	2003	2004	2005	2006	2007	2008	2009	2010	2011	2012	2013	TOTAL	
Sex	Male	3	2	7	197	769	1741	2443	2441	3289	4037	4406	3727	4327	4312	4626	5472	6349	6083	5731	5383	4955	3804	2988	2527	2984	2744	2704	2665	90716	
	Female	0	0	2	3	9	53	69	66	104	161	191	197	297	380	481	466	629	673	696	737	875	745	704	553	668	735	734	728	10956	
	Total	3	2	9	200	778	1794	2512	2507	3393	4198	4597	3924	4624	4692	5107	5938	6978	6756	6427	6120	5830	4549	3692	3080	3652	3479	3438	3393	101672	
Ethnic Group	Malay	2	0	6	169	583	1307	1783	1812	2549	3151	3287	2789	3389	3354	3554	4361	5125	4847	4740	4494	3938	3029	2510	2176	2282	2135	1976	1798	71146	
	Chinese	1	1	3	11	99	217	339	349	448	574	740	688	718	789	924	852	1005	988	786	763	921	670	438	363	596	575	596	710	15164	
	Indian	0	1	0	9	53	214	308	220	320	354	419	324	351	362	453	483	507	508	468	416	423	339	217	180	261	247	239	259	7935	
	Foreigner	0	0	0	6	39	51	73	107	59	93	105	88	118	112	107	171	213	286	284	269	233	308	187	166	298	297	373	299	4342	
	Others	0	0	0	5	4	5	9	19	17	26	46	35	48	75	69	71	128	127	149	178	315	203	340	195	215	225	254	327	3085	
	Total	3	2	9	200	778	1794	2512	2507	3393	4198	4597	3924	4624	4692	5107	5938	6978	6756	6427	6120	5830	4549	3692	3080	3652	3479	3438	3393	101672	
Age Group	<13	0	0	0	0	3	5	7	4	14	10	20	20	39	61	86	63	71	61	79	76	87	58	48	58	39	65	52	50	1076	
	13-19	0	0	2	13	8	49	44	47	66	91	67	43	63	140	65	65	61	78	55	64	59	60	75	37	43	55	77	75	1502	
	20-29	1	0	4	107	371	806	1119	1146	1421	1702	1668	1423	1678	1620	1639	1958	2440	2192	2055	1820	1587	1198	919	712	857	860	1002	1066	33371	
	30-39	0	2	3	65	292	777	1080	1068	1510	1789	2100	1744	1904	1993	2209	2590	2846	2819	2745	2660	2566	2006	1559	1382	1595	1428	1406	1207	43345	
	40-49	2	0	0	5	48	113	191	183	309	414	580	556	730	676	901	1069	1258	1246	1169	1135	1120	875	722	604	792	766	731	703	16898	
	50+	0	0	0	5	3	6	15	29	39	73	95	102	146	132	172	173	302	304	290	327	361	321	275	243	326	305	167	292	4503	
	Unknown	0	0	0	5	53	38	56	30	34	119	67	36	64	70	35	20	0	56	34	38	50	31	94	44	0	0	3	0	977	
	Total	3	2	9	200	778	1794	2512	2507	3393	4198	4597	3924	4624	4692	5107	5938	6978	6756	6427	6120	5830	4549	3692	3080	3652	3479	3438	3393	101672	
Risk Factor	Homo/bisexual	1	0	1	2	3	23	19	17	22	17	47	58	33	43	62	44	51	151	222	209	263	184	113	162	301	358	654	754	3814	
	IDU	1	1	1	148	470	1153	1892	1970	2777	3187	3800	3014	3592	3374	3815	4724	5176	4796	4478	4038	3127	2601	2113	1699	1737	1348	1014	728	66774	
	Heterosexual	1	1	1	30	38	103	152	174	205	310	344	400	653	824	902	834	1218	1307	1271	1356	1599	1315	989	821	1472	1573	1538	1742	21173	
	Blood recipient	0	0	6	1	0	2	0	4	3	0	0	0	0	0	2	1	5	1	0	3	1	0	1	1	0	6	1	0	38	
	Organ recipient	0	0	0	0	0	2	0	0	0	0	1	0	0	0	0	0	0	0	0	0	0	0	0	0	0	0	0	0	0	3
	Mother-to-Child	0	0	0	0	0	3	4	2	8	4	20	19	34	44	82	57	60	62	67	75	81	70	50	51	39	70	47	52	1001	
	Unknown	0	0	0	19	267	508	445	340	378	680	385	433	312	407	244	278	468	439	389	439	759	379	426	346	103	124	184	117	8869	
	Total	3	2	9	200	778	1794	2512	2507	3393	4198	4597	3924	4624	4692	5107	5938	6978	6756	6427	6120	5830	4549	3692	3080	3652	3479	3438	3393	101672	
Social Group	Jobless	0	0	1	11	94	230	162	138	144	244	650	599	741	895	1173	1357	1283	1340	1468	1619	1197	1057	830	696	724	718	631	0	18002	
	Gov Servant	1	0	1	1	1	10	13	7	7	14	8	22	34	26	28	45	51	56	54	65	57	47	45	56	76	96	114	0	935	
	Student	0	0	3	0	0	1	3	1	1	2	1	1	10	7	9	9	24	13	27	27	36	30	28	35	44	69	170	0	551	
	Police/Army	0	0	0	1	3	14	13	22	8	19	26	23	48	48	60	46	73	64	51	57	43	28	15	16	20	16	16	0	730	
	Fishermen/fishermong	0	0	0	23	65	49	103	139	66	132	136	187	256	220	225	275	308	234	217	190	180	93	100	94	99	64	49	0	3504	
	Factory/private	1	1	0	8	19	123	114	84	61	138	204	296	439	357	205	499	501	1140	633	507	490	269	203	279	456	608	701	0	8336	
	Sex worker	0	0	0	7	1	23	23	18	21	12	17	8	26	29	31	35	54	43	40	41	29	25	61	20	22	25	10	0	621	
	Housewife	0	0	0	0	0	2	2	3	5	17	16	45	98	113	128	197	230	264	363	296	328	331	292	260	296	303	268	0	3857	
	Long distant lorry driver	0	0	0	0	0	18	13	15	7	36	49	101	146	134	164	191	246	208	208	186	113	120	144	83	82	83	71	0	2418	
	Others	0	1	3	45	169	319	451	392	419	744	755	1065	1631	1565	2119	2550	2385	2420	2515	2171	2442	2245	1799	1355	1489	1124	1268	0	33441	
	Odd job	1	0	1	104	426	1005	1615	1688	2654	2840	2735	1577	1195	1298	965	734	1823	974	851	961	915	304	175	186	344	373	140	0	25884	
	Total	3	2	9	200	778	1794	2512	2507	3393	4198	4597	3924	4624	4692	5107	5938	6978	6756	6427	6120	5830	4549	3692	3080	3652	3479	3438	0	98279	

Source: HW/STI Section, Division of Disease Control, Ministry of Health Malaysia