



The Hong Kong STD/AIDS update is a composite report on HIV/AIDS reporting and STI caseload statistics published 3 monthly. The current issue has the updated information up to December 2017.

SPP Surveillance Team:

Dr. Michelle CHAK

Ms. Rita LUI

Correspondence to:

Special Preventive Programme,

Centre for Health Protection, Department of Health

c/o Red Ribbon Centre, 2/F Wang Tau Hom Jockey Club Clinic,

200 Junction Road East, Kowloon, Hong Kong

Tel: (852) 3143 7200 Fax: (852) 2338 0534

E-mail: aids@dh.gov.hk

List of Tables / Figures

LIST OF TABLES / FIGURES	137
1. NUMBER OF HIV/AIDS REPORTED	139
TABLE 1.1 SUMMARY TABLE ON THE REPORTED NUMBER OF HIV/AIDS	139
CHART 1.1 NUMBER OF HIV/AIDS REPORTED	142
2. GENDER DISTRIBUTION OF REPORTED HIV/AIDS	143
TABLE 2.1 GENDER DISTRIBUTION OF REPORTED HIV	143
CHART 2.1 GENDER DISTRIBUTION OF REPORTED HIV BY QUARTER	144
CHART 2.2 GENDER DISTRIBUTION OF REPORTED HIV BY YEAR	145
TABLE 2.2 GENDER DISTRIBUTION OF REPORTED AIDS	146
CHART 2.3 GENDER DISTRIBUTION OF REPORTED AIDS BY QUARTER	147
CHART 2.4 GENDER DISTRIBUTION OF REPORTED AIDS BY YEAR	148
3. ETHNICITY OF REPORTED HIV/AIDS	149
TABLE 3.1 DISTRIBUTION OF ETHNICITY OF REPORTED HIV	149
CHART 3.1 DISTRIBUTION OF ETHNICITY OF REPORTED HIV	150
TABLE 3.2 DISTRIBUTION OF ETHNICITY OF REPORTED AIDS	151
CHART 3.2 DISTRIBUTION OF ETHNICITY OF REPORTED AIDS	152
4. AGE DISTRIBUTION OF REPORTED HIV/AIDS	153
TABLE 4.1 AGE DISTRIBUTION OF REPORTED HIV	153
CHART 4.1 AGE DISTRIBUTION OF REPORTED HIV	154
CHART 4.2 AGE GROUP & GENDER OF TOTAL REPORTED HIV	155
TABLE 4.2 AGE DISTRIBUTION OF REPORTED AIDS	156
CHART 4.3 AGE DISTRIBUTION OF REPORTED AIDS	157
CHART 4.4 AGE GROUP & GENDER OF TOTAL REPORTED AIDS	158
5. EXPOSURE CATEGORIES OF REPORTED HIV/AIDS	159
TABLE 5.1 EXPOSURE CATEGORIES OF REPORTED HIV	159
CHART 5.1 EXPOSURE CATEGORIES OF REPORTED HIV	160
TABLE 5.2 EXPOSURE CATEGORIES OF REPORTED AIDS	161
CHART 5.2 EXPOSURE CATEGORIES OF REPORTED AIDS	162
6. RATIO (HETEROSEXUAL : HOMOSEXUAL / BISEXUAL) OF SEXUALLY ACQUIRED HIV INFECTION IN MEN	163

TABLE 6.1 RATIO OF SEXUALLY ACQUIRED INFECTION IN MEN WITH REPORTED HIV/AIDS (HETEROSEXUAL : HOMO / BISEXUAL) BY QUARTER	163
TABLE 6.2 RATIO OF SEXUALLY ACQUIRED INFECTION IN MEN WITH REPORTED HIV/AIDS (HETEROSEXUAL : HOMO / BISEXUAL) BY YEAR	164
7. INJECTING DRUG USERS IN REPORTED HIV/AIDS	165
TABLE 7.1 INJECTING DRUG USERS IN REPORTED HIV/AIDS	165
TABLE 7.2 NUMBER OF INJECTING DRUG USER IN REPORTED HIV/AIDS BY YEAR	166
8. SOURCE OF REFERRAL OF REPORTED HIV/AIDS	167
TABLE 8.1 SOURCE OF REFERRAL OF REPORTED HIV	167
CHART 8.1 SOURCE OF REFERRAL OF REPORTED HIV	168
TABLE 8.2 SOURCE OF REFERRAL OF REPORTED AIDS	169
CHART 8.2 SOURCE OF REFERRAL OF REPORTED AIDS	170
9. DISTRIBUTION OF AIDS DEFINING ILLNESSES	171
TABLE 9.1 DISTRIBUTION OF AIDS DEFINING ILLNESS OF REPORTED AIDS	171
CHART 9.1 AIDS DEFINING ILLNESS OF TOTAL REPORTED AIDS	172
CHART 9.2 AIDS DEFINING ILLNESS OF REPORTED AIDS BY YEAR	173
10. REPORTED SEXUALLY TRANSMITTED INFECTIONS (STIS) DIAGNOSED IN SOCIAL HYGIENE SERVICE	174
TABLE 10.1 SUMMARY TABLE ON THE REPORTED STIS DIAGNOSED IN SOCIAL HYGIENE SERVICE	174
11. GENDER DISTRIBUTION OF REPORTED STIS	176
TABLE 11.1 GENDER DISTRIBUTION OF SELECTED STI REPORTED BY SOCIAL HYGIENE SERVICE	176
TABLE 11.2 GENDER DISTRIBUTION OF REPORTED STI BY CLINIC	178
12. CLINIC DISTRIBUTION	179
CHART 12.1 NUMBER OF NEWLY REPORT STI IN Q4 2017 BY CLINIC (MALE CLIENTS)	179
CHART 12.2 NUMBER OF NEWLY REPORT STI IN Q4 2017 BY CLINIC (FEMALE CLIENTS)	180

1. Number of HIV/AIDS reported

Table 1.1 Summary table on the reported number of HIV/AIDS

	This quarter (Oct - Dec 2017)		Last quarter (Jul - Sep 2017)		Same quarter last year (Oct - Dec 2016)		Cumulative (1984 – 2017)	
	HIV	AIDS	HIV	AIDS	HIV	AIDS	HIV	AIDS
Sex								
Male	118	22	129	12	146	16	7,406	1,547
Female	21	6	24	0	21	9	1,685	310
Ethnicity/race								
Chinese	92	22	114	9	116	20	6,257	1,427
Non-Chinese	25	6	22	3	33	5	2,586	430
<i>Asian</i>	14	4	11	3	10	5	1,293	287
<i>White</i>	5	0	3	0	7	0	550	96
<i>Black</i>	4	1	5	0	3	0	223	40
<i>Others</i>	2	1	3	0	13	0	520	7
Unknown	22	0	17	0	18	0	248	0

(to be cont'd)

Table 1.1 (cont'd)

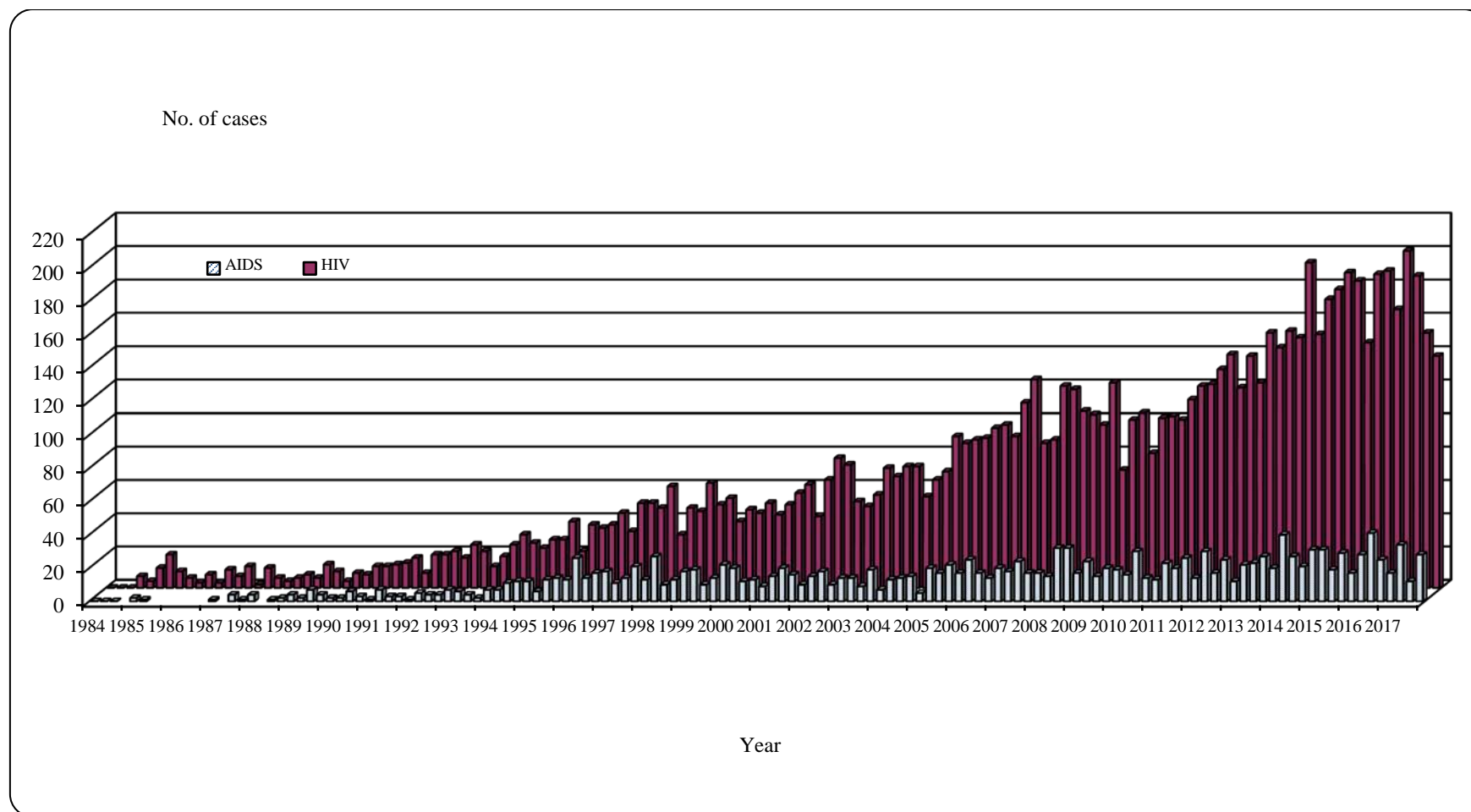
	This quarter (Oct - Dec 2017)		Last quarter (Jul - Sep 2017)		Same quarter last year (Oct - Dec 2016)		Cumulative (1984 – 2017)	
	HIV	AIDS	HIV	AIDS	HIV	AIDS	HIV	AIDS
Age at diagnosis								
Adult	139	28	153	12	167	25	9,038	1,843
Child (age 13 or less)	0	0	0	0	0	0	53	14
Exposure category								
Heterosexual	21	11	27	2	26	10	3,066	996
Homosexual	56	13	80	6	102	12	3,576	531
Bisexual	11	2	18	2	7	2	452	99
Injecting drug use	1	1	1	0	0	0	356	66
Blood / blood product infusion	0	0	0	0	0	0	85	25
Perinatal	0	0	1	0	0	0	33	10
Undetermined	50	1	26	2	32	1	1,523	130

(to be cont'd)

Table 1.1 (Cont'd)

	This quarter (Oct - Dec 2017)		Last quarter (Jul - Sep 2017)		Same quarter last year (Oct - Dec 2016)		Cumulative (1984 – 2017)	
	HIV	AIDS	HIV	AIDS	HIV	AIDS	HIV	AIDS
Source of referral								
Public hospitals / clinics / laboratories	65	24	47	11	57	19	3,658	1,418
Private hospitals / clinics / laboratories	21	1	19	0	29	4	1,839	242
Social Hygiene Clinics	19	3	33	0	32	1	1,294	68
DH AIDS Unit	17	0	33	1	17	1	1,173	101
AIDS service organisations (NGOs)	13	0	21	0	31	0	838	13
Hong Kong Red Cross Blood Transfusion Service	1	0	0	0	1	0	160	9
Drug rehabilitation services	3	0	0	0	0	0	129	6
Total	139	28	153	12	167	25	9,091	1,857

Chart 1.1 Number of HIV/AIDS reported



2. Gender distribution of reported HIV/AIDS

Table 2.1 Gender distribution of reported HIV

	This quarter (Oct - Dec 2017)	Last quarter (Jul - Sep 2017)	Same quarter last year (Oct - Dec 2016)	Cumulative (1984 – 2017)
Male	118	129	146	7,406
Female	21	24	21	1,685
Total	139	153	167	9,091

Chart 2.1 Gender distribution of reported HIV by quarter

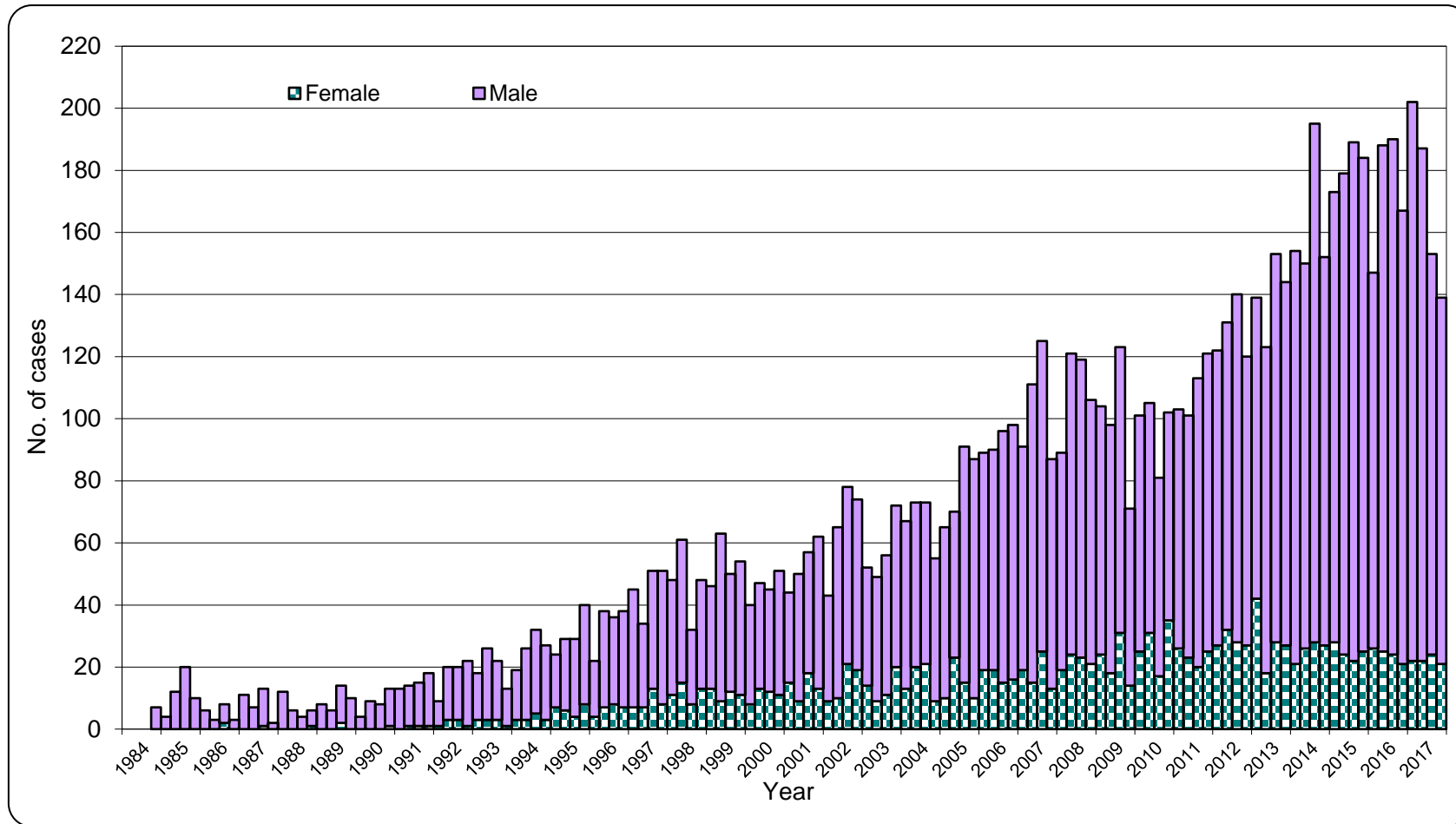


Chart 2.2 Gender distribution of reported HIV by year

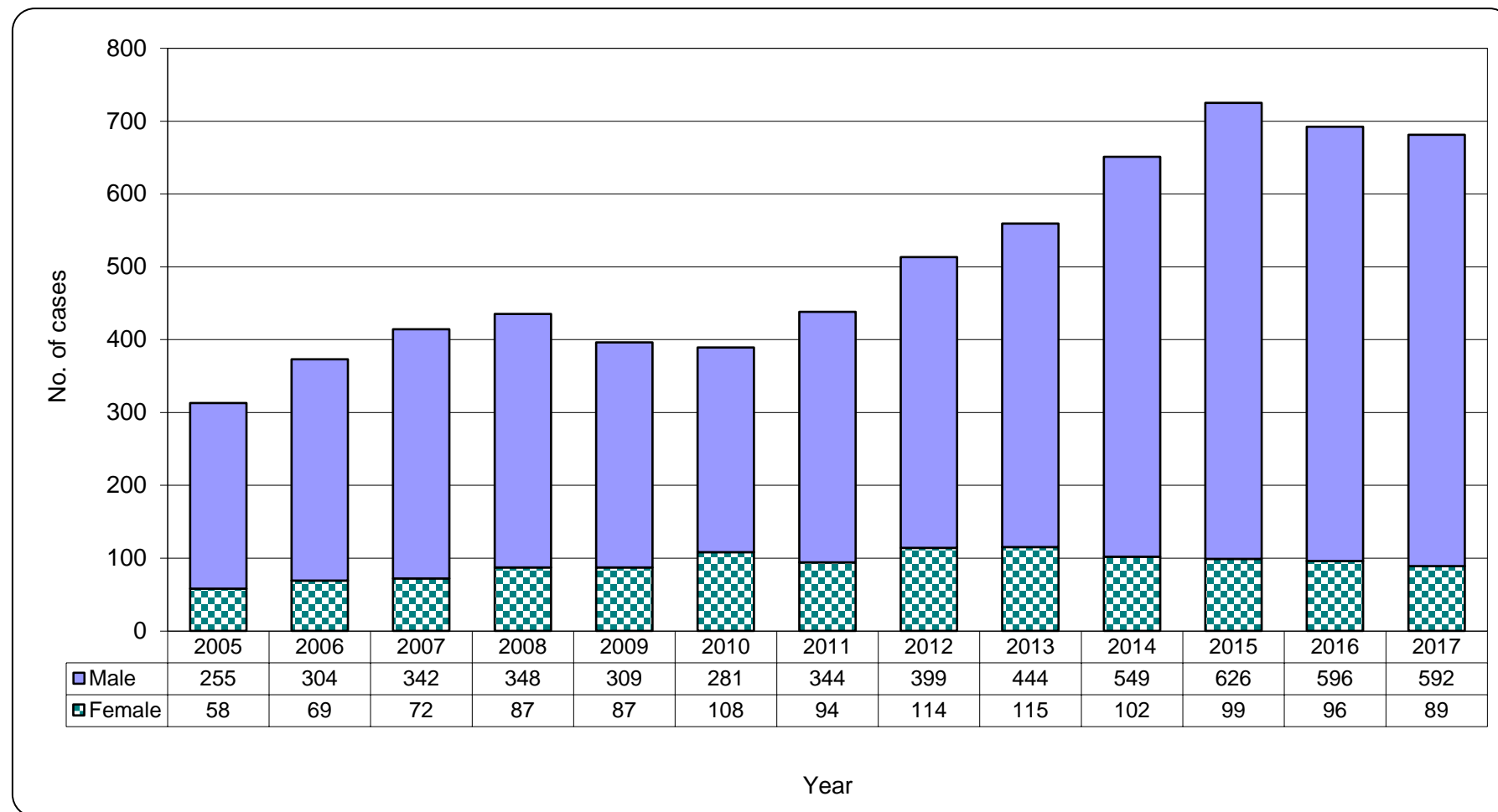


Table 2.2 Gender distribution of reported AIDS

	This quarter (Oct - Dec 2017)	Last quarter (Jul - Sep 2017)	Same quarter last year (Oct - Dec 2016)	Cumulative (1984 – 2017)
Male	22	12	16	1,547
Female	6	0	9	310
Total	28	12	25	1,857

Chart 2.3 Gender distribution of reported AIDS by quarter

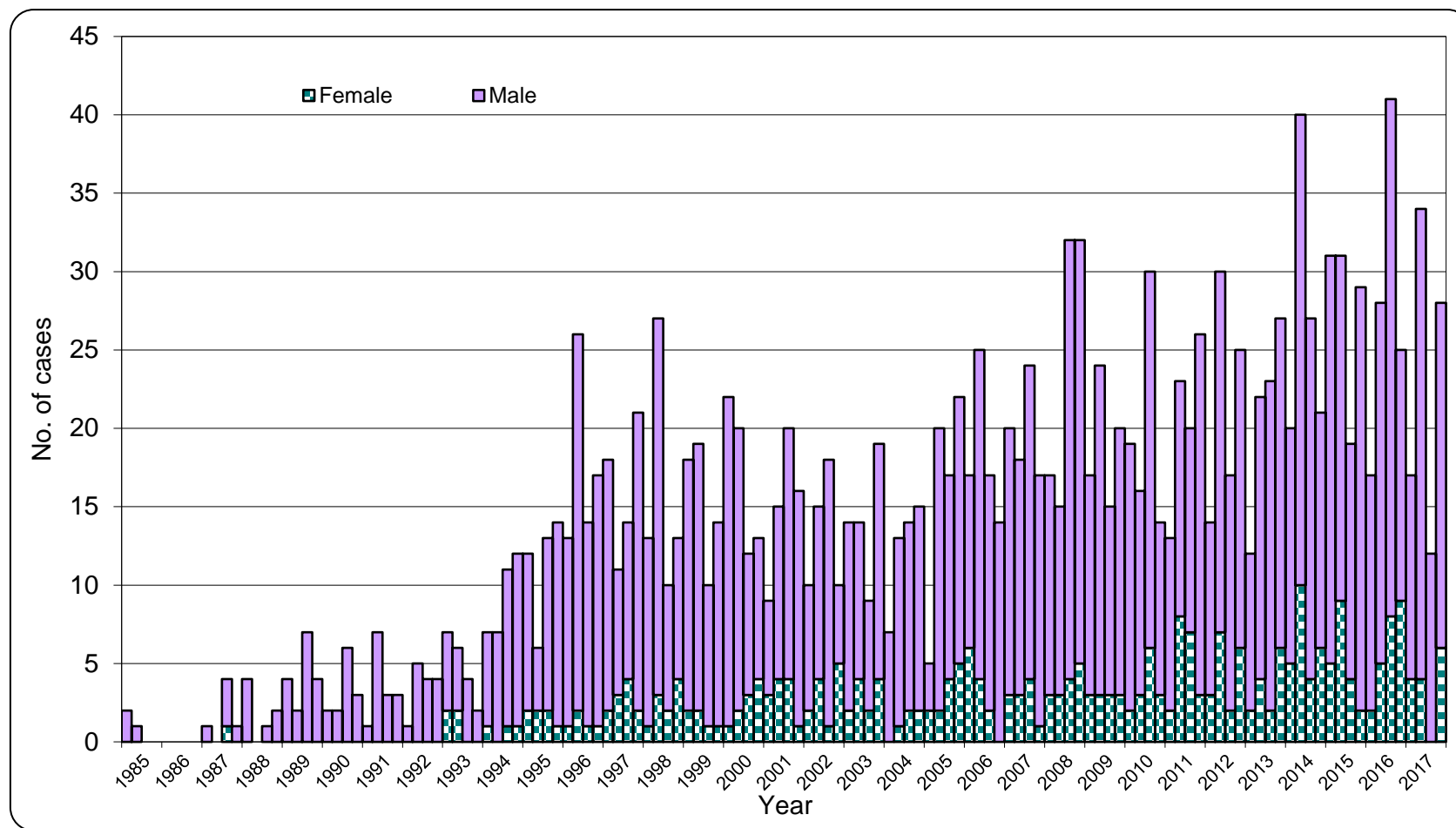
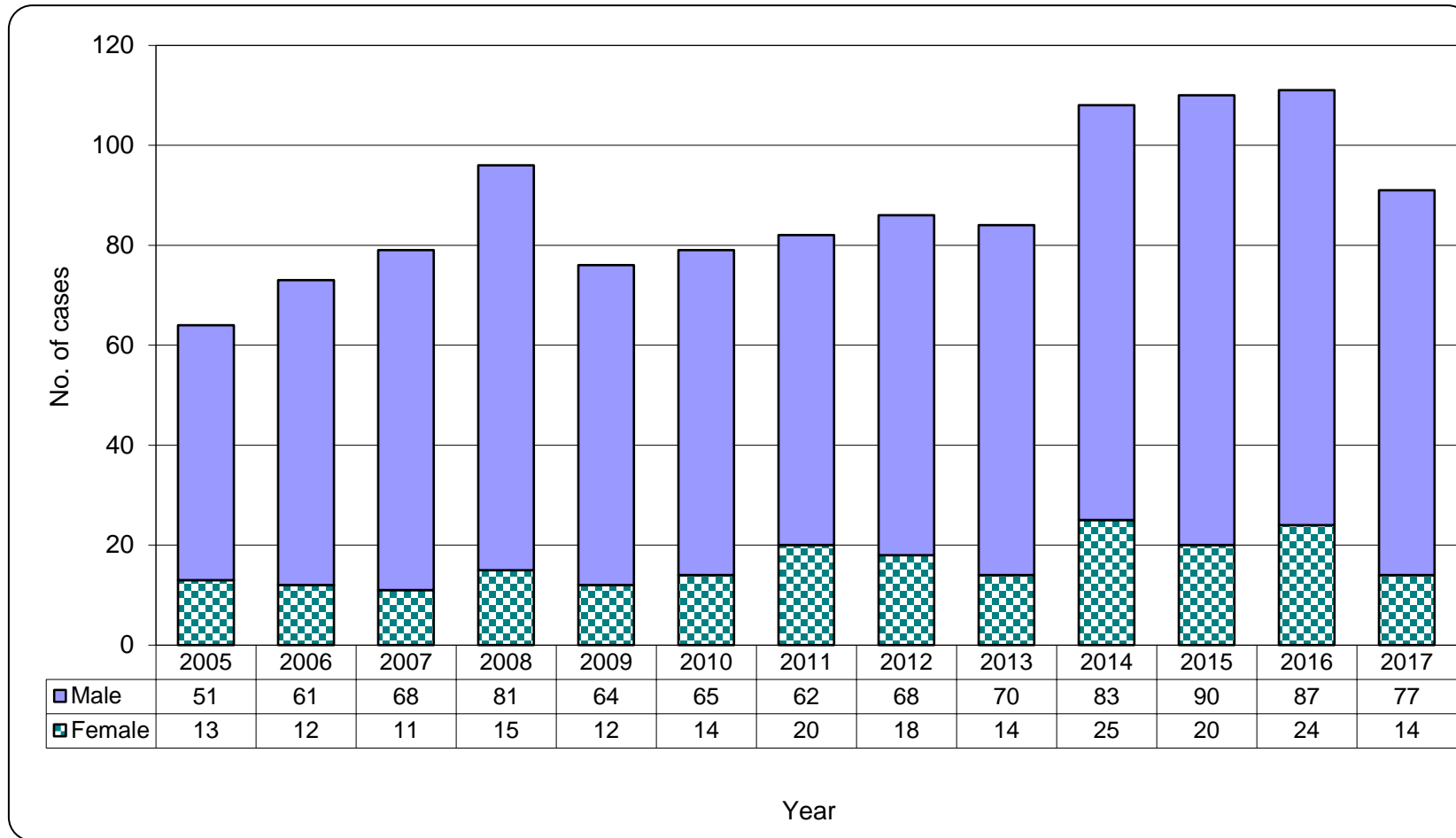


Chart 2.4 Gender distribution of reported AIDS by year



3. Ethnicity of reported HIV/AIDS

Table 3.1 Distribution of ethnicity of reported HIV

	This quarter (Oct - Dec 2017)	Last quarter (Jul - Sep 2017)	Same quarter last year (Oct - Dec 2016)	Cumulative (1984 – 2017)
Chinese	92	114	116	6,257
Non-Chinese	25	22	33	2,586
<i>Asian</i>	14	11	10	1,293
<i>White</i>	5	3	7	550
<i>Black</i>	4	5	3	223
<i>Others</i>	2	3	13	520
Unknown	22	17	18	248
Total	139	153	167	9,091

Chart 3.1 Distribution of ethnicity of reported HIV

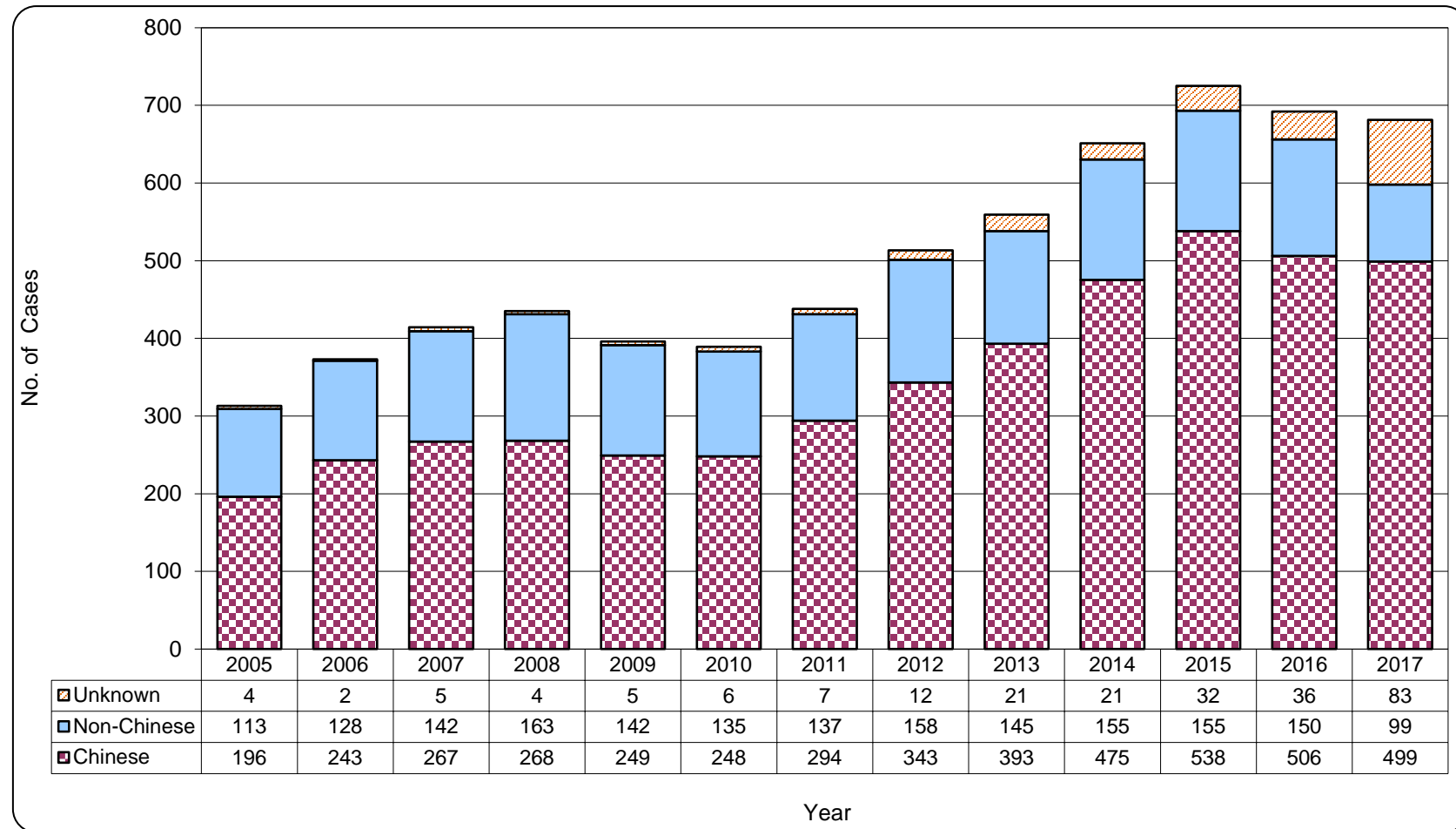
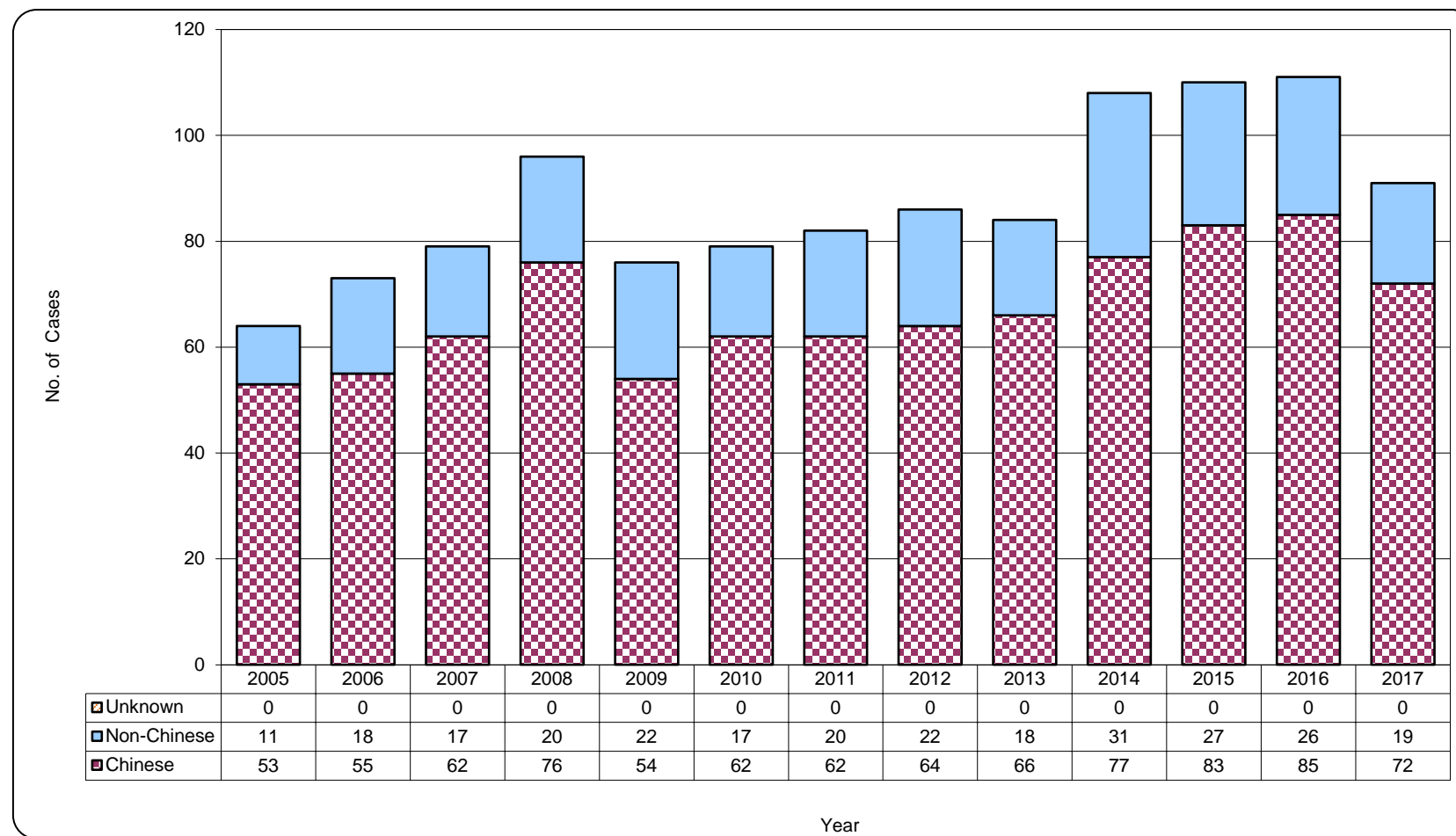


Table 3.2 Distribution of ethnicity of reported AIDS

	This quarter (Oct - Dec 2017)	Last quarter (Jul - Sep 2017)	Same quarter last year (Oct - Dec 2016)	Cumulative (1984 – 2017)
Chinese	22	9	20	1,427
Non-Chinese	6	3	5	430
<i>Asian</i>	4	3	5	287
<i>White</i>	0	0	0	96
<i>Black</i>	1	0	0	40
<i>Others</i>	1	0	0	7
Unknown	0	0	0	0
Total	28	12	25	1,857

Chart 3.2 Distribution of ethnicity of reported AIDS



4. Age distribution of reported HIV/AIDS

Table 4.1 Age distribution of reported HIV

	This quarter (Oct - Dec 2017)	Last quarter (Jul - Sep 2017)	Same quarter last year (Oct - Dec 2016)	Cumulative (1984 – 2017)
Adult	139	153	167	9,038
Child (age 13 or less)	0	0	0	53
Total	139	153	167	9,091

Chart 4.1 Age distribution of reported HIV

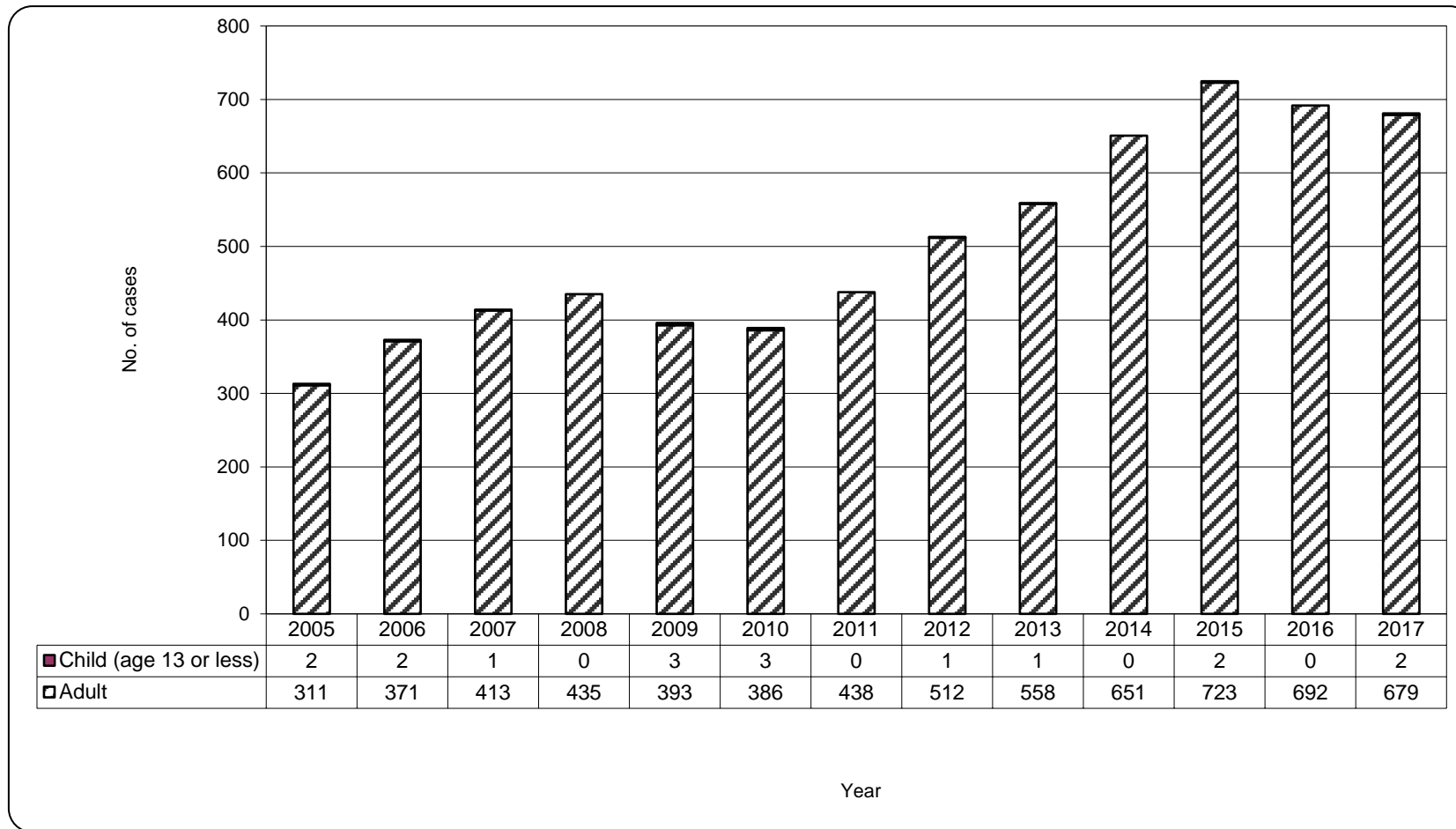


Chart 4.2 Age group & gender of total reported HIV

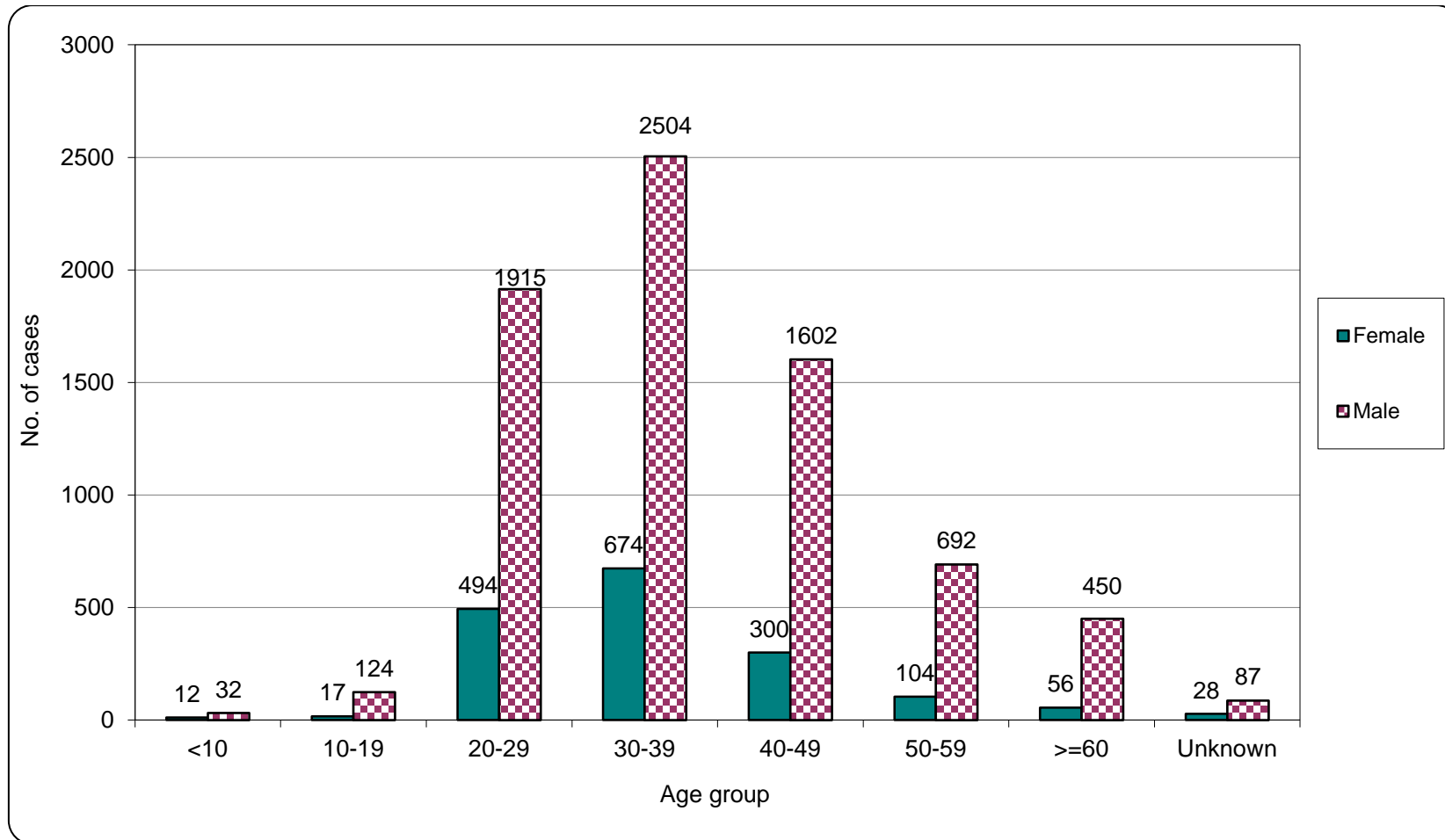


Table 4.2 Age distribution of reported AIDS

	This quarter (Oct - Dec 2017)	Last quarter (Jul - Sep 2017)	Same quarter last year (Oct - Dec 2016)	Cumulative (1984 – 2017)
Adult	28	12	25	1,843
Child (age 13 or less)	0	0	0	14
Total	28	12	25	1,857

Chart 4.3 Age distribution of reported AIDS

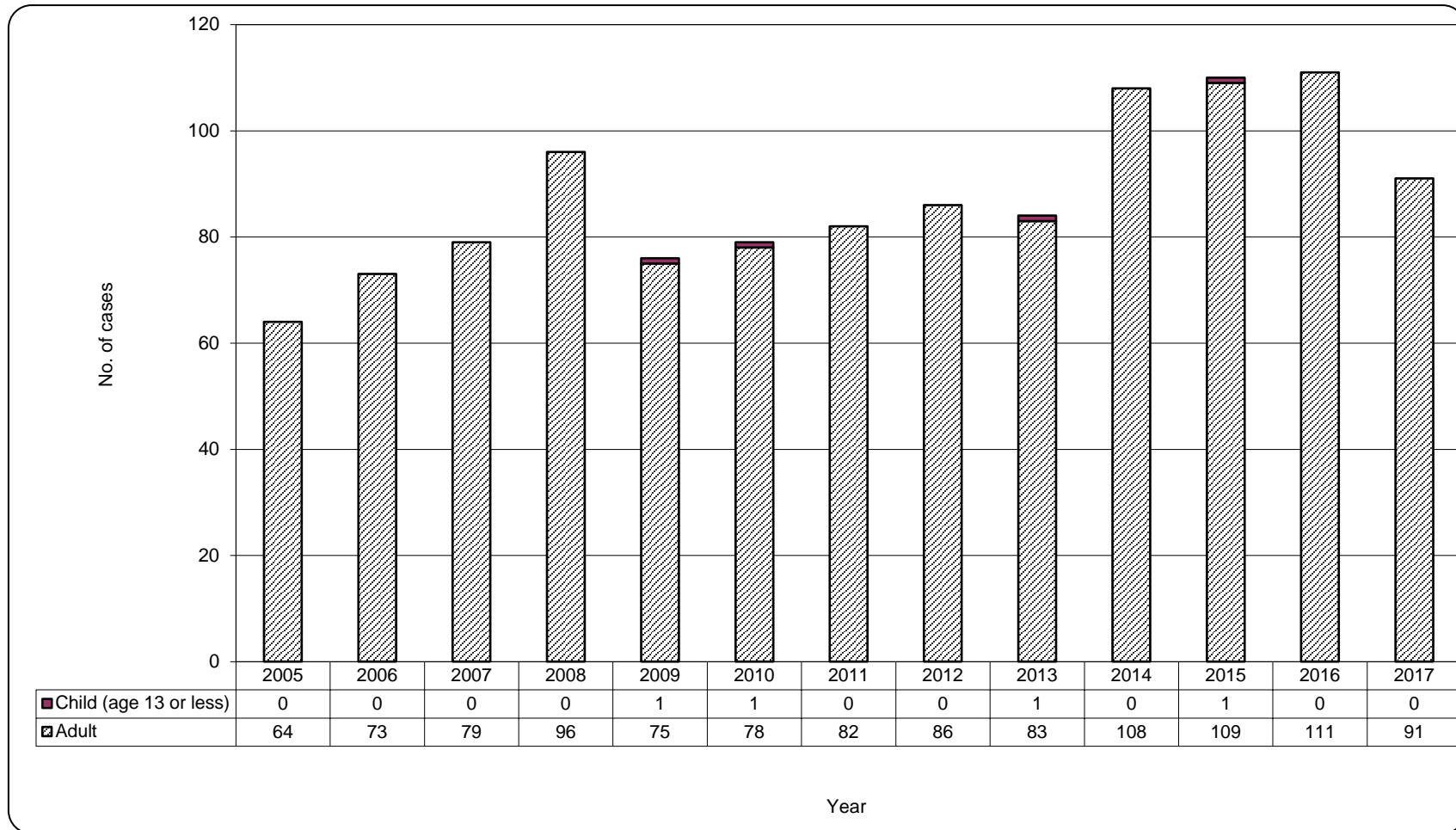
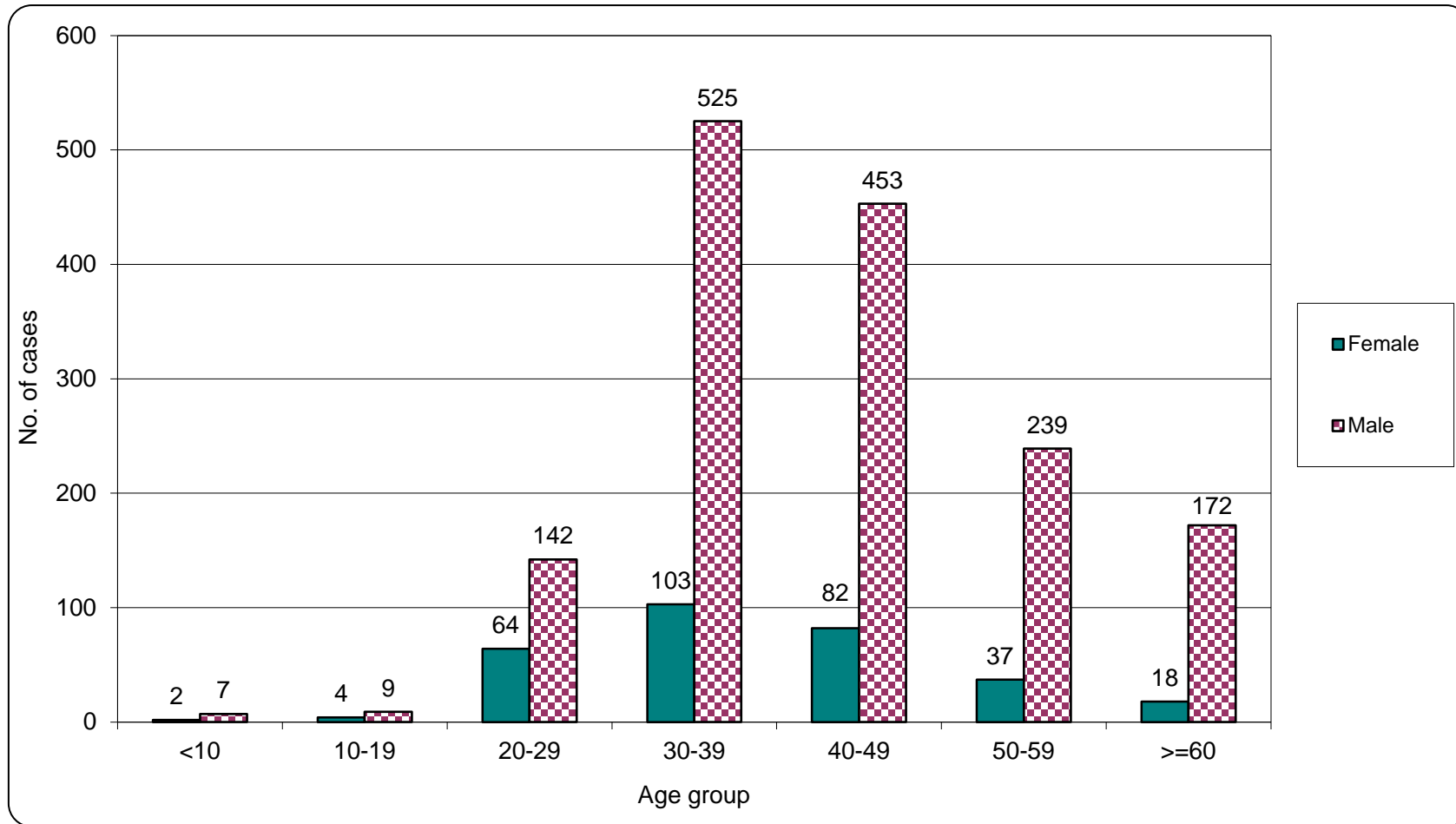


Chart 4.4 Age group & gender of total reported AIDS



5. Exposure categories of reported HIV/AIDS

Table 5.1 Exposure categories of reported HIV

	This quarter (Oct - Dec 2017)	Last quarter (Jul - Sep 2017)	Same quarter last year (Oct - Dec 2016)	Cumulative (1984 – 2017)
Heterosexual	21	27	26	3,066
Homosexual	56	80	102	3,576
Bisexual	11	18	7	452
Injecting drug use	1	1	0	356
Blood / blood product infusion	0	0	0	85
Perinatal	0	1	0	33
Undetermined	50	26	32	1,523
Total	139	153	167	9,091

Chart 5.1 Exposure categories of reported HIV

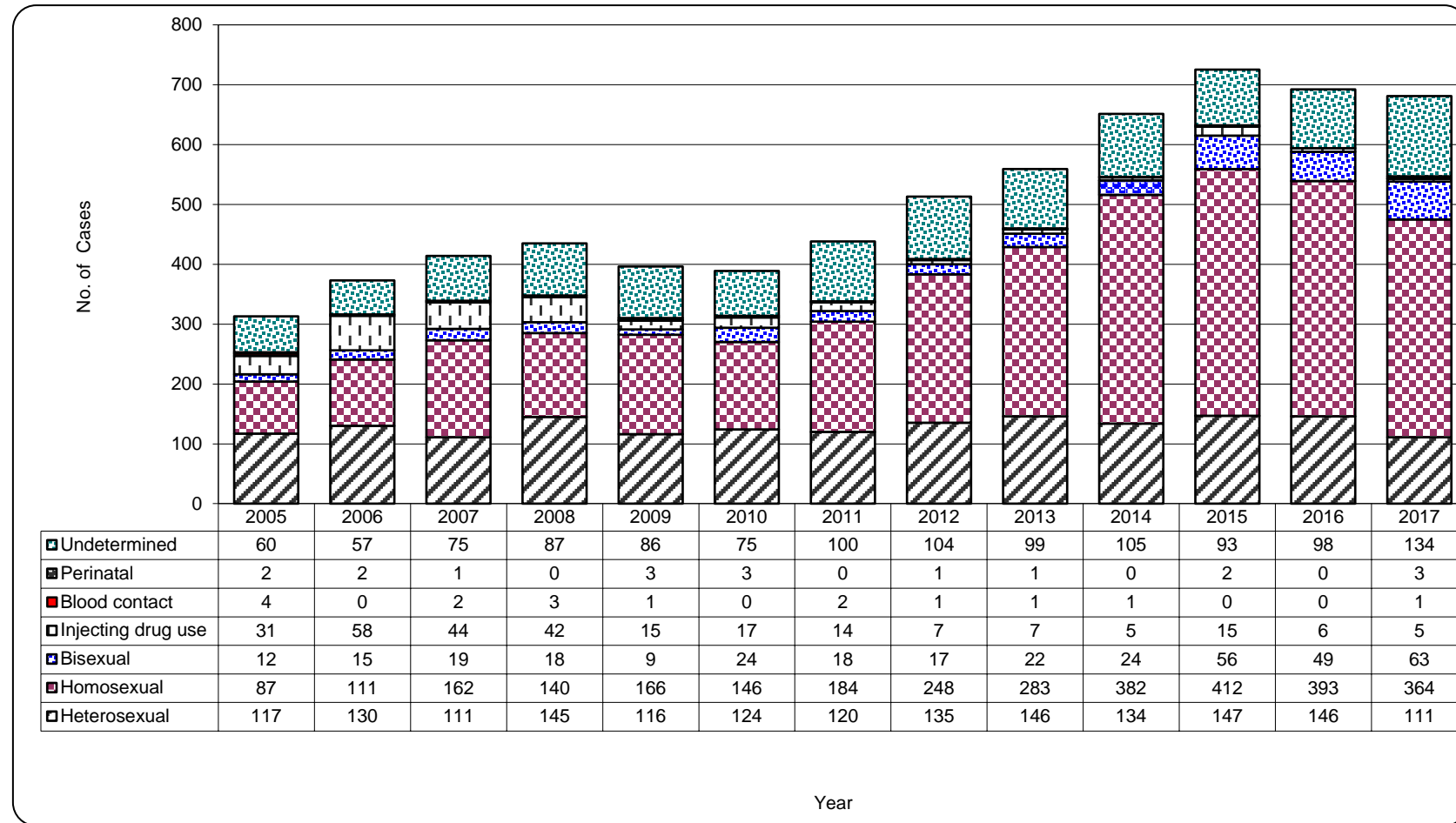
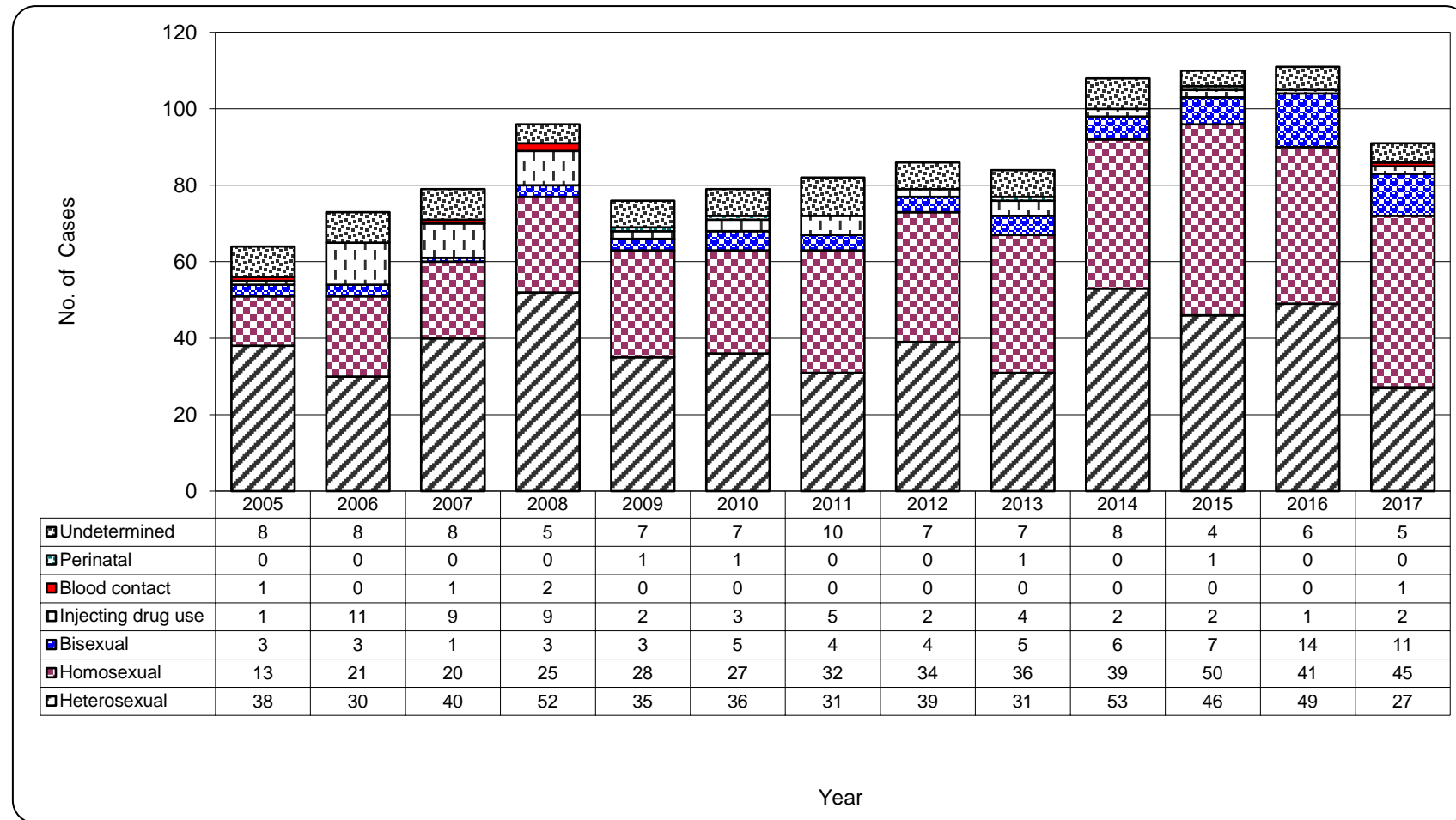


Table 5.2 Exposure categories of reported AIDS

	This quarter (Oct - Dec 2017)	Last quarter (Jul - Sep 2017)	Same quarter last year (Oct - Dec 2016)	Cumulative (1984 – 2017)
Heterosexual	11	2	10	996
Homosexual	13	6	12	531
Bisexual	2	2	2	99
Injecting drug use	1	0	0	66
Blood / blood product infusion	0	0	0	25
Perinatal	0	0	0	10
Undetermined	1	2	1	130
Total	28	12	25	1,857

Chart 5.2 Exposure categories of reported AIDS



6. Ratio (heterosexual : homosexual / bisexual) of sexually acquired HIV infection in men

Table 6.1 Ratio of sexually acquired infection in men with reported HIV/AIDS (heterosexual : homo / bisexual) by quarter

	This quarter (Oct - Dec 2017)	Last quarter (Jul - Sep 2017)	Same quarter last year (Oct - Dec 2016)	Cumulative (1984 – 2017)
HIV	0.1 : 1	0.1 : 1	0.1 : 1	0.5 : 1
AIDS	0.3 : 1	0.3 : 1	0.1 : 1	1.1 : 1

Table 6.2 Ratio of sexually acquired infection in men with reported HIV/AIDS (heterosexual : homo / bisexual) by year

	2006	2007	2008	2009	2010	2011	2012	2013	2014	2015	2016	2017	1984 – 2017
HIV	0.7 : 1	0.4 : 1	0.6 : 1	0.4 : 1	0.4 : 1	0.3 : 1	0.3 : 1	0.2 : 1	0.2 : 1	0.2 : 1	0.2 : 1	0.1 : 1	0.5 : 1
AIDS	0.8 : 1	1.5 : 1	1.4 : 1	0.8 : 1	0.8 : 1	0.4 : 1	0.6 : 1	0.4 : 1	0.7 : 1	0.5 : 1	0.5 : 1	0.3 : 1	1.1 : 1

7. Injecting drug users in reported HIV/AIDS

Table 7.1 Injecting drug users in reported HIV/AIDS

	This quarter (Oct - Dec 2017)	Last quarter (Jul - Sep 2017)	Same quarter last year (Oct - Dec 2016)	Cumulative (1984 – 2017)
HIV (% of reported HIV)	1 0.7%	1 0.7%	0 0.0%	356 3.9%
AIDS (% of reported AIDS)	1 3.6%	0 0.0%	0 0.0%	66 3.6%

Table 7.2 Number of injecting drug user in reported HIV/AIDS by year

	2006	2007	2008	2009	2010	2011	2012	2013	2014	2015	2016	2017	1984 – 2017
HIV (% of reported HIV)	58 (15.5%)	44 (10.6%)	42 (9.7%)	15 (3.8%)	17 (4.4%)	14 (3.2%)	7 (1.4%)	7 (1.3%)	5 (0.8%)	15 (2.1%)	6 (0.9%)	5 (0.7%)	356 (3.9%)
AIDS (% of reported AIDS)	11 (15.1%)	9 (11.4%)	9 (9.4%)	2 (2.6%)	3 (3.8%)	5 (6.1%)	2 (2.3%)	4 (4.8%)	2 (1.9%)	2 (1.8%)	1 (0.9%)	2 (2.2%)	66 (3.6%)

8. Source of referral of reported HIV/AIDS

Table 8.1 Source of referral of reported HIV

	This quarter (Oct - Dec 2017)	Last quarter (Jul - Sep 2017)	Same quarter last year (Oct - Dec 2016)	Cumulative (1984 – 2017)
Public hospitals / clinics / laboratories	65	47	57	3,658
Private hospitals / clinics / laboratories	21	19	29	1,839
Social Hygiene Clinics	19	33	32	1,294
DH AIDS unit	17	33	17	1,173
AIDS service organisations (NGOs)	13	21	31	838
Hong Kong Red Cross Blood Transfusion Service	1	0	1	160
Drug rehabilitation services	3	0	0	129
Total	139	153	167	9,091

Chart 8.1 Source of referral of reported HIV

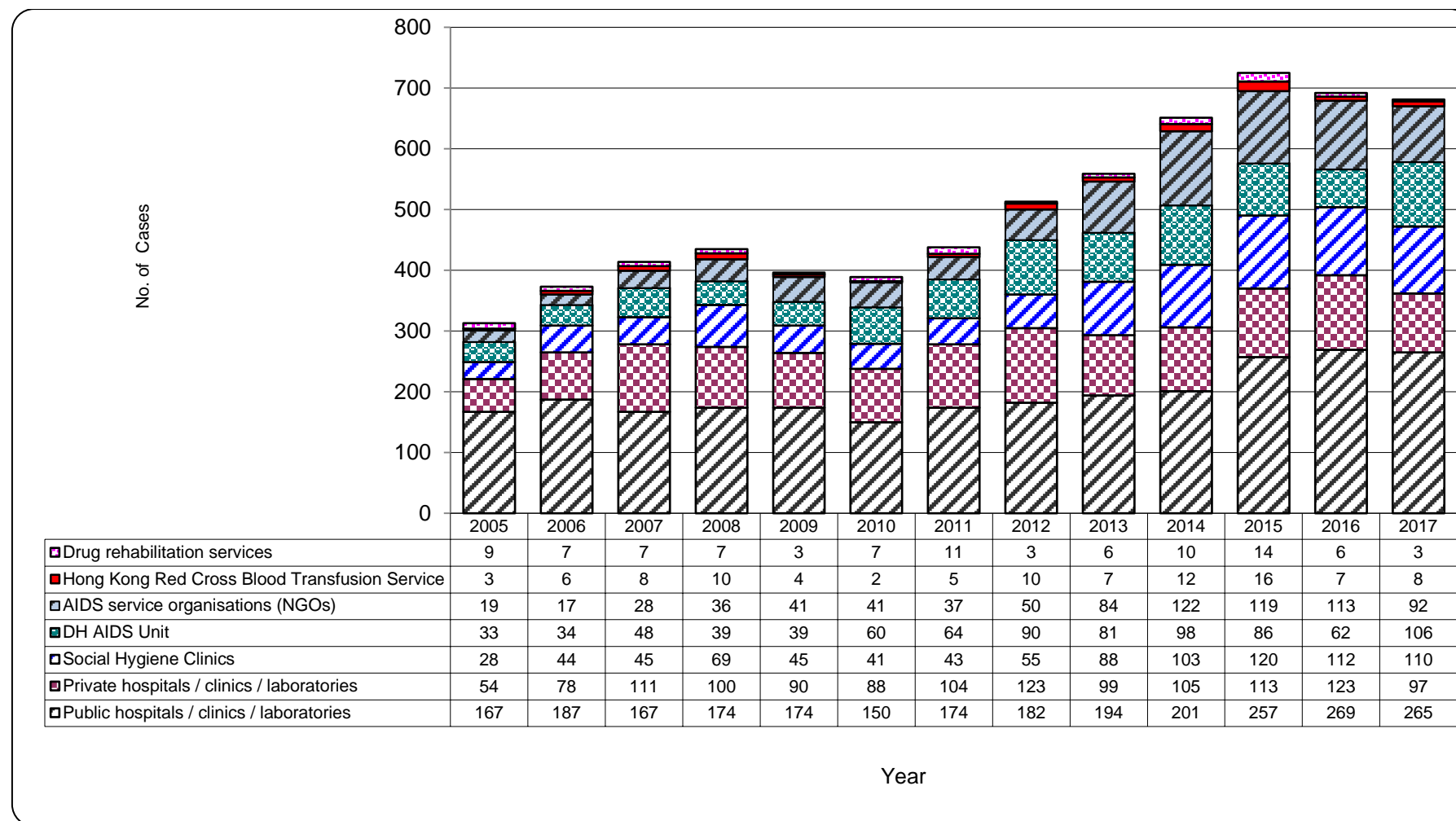
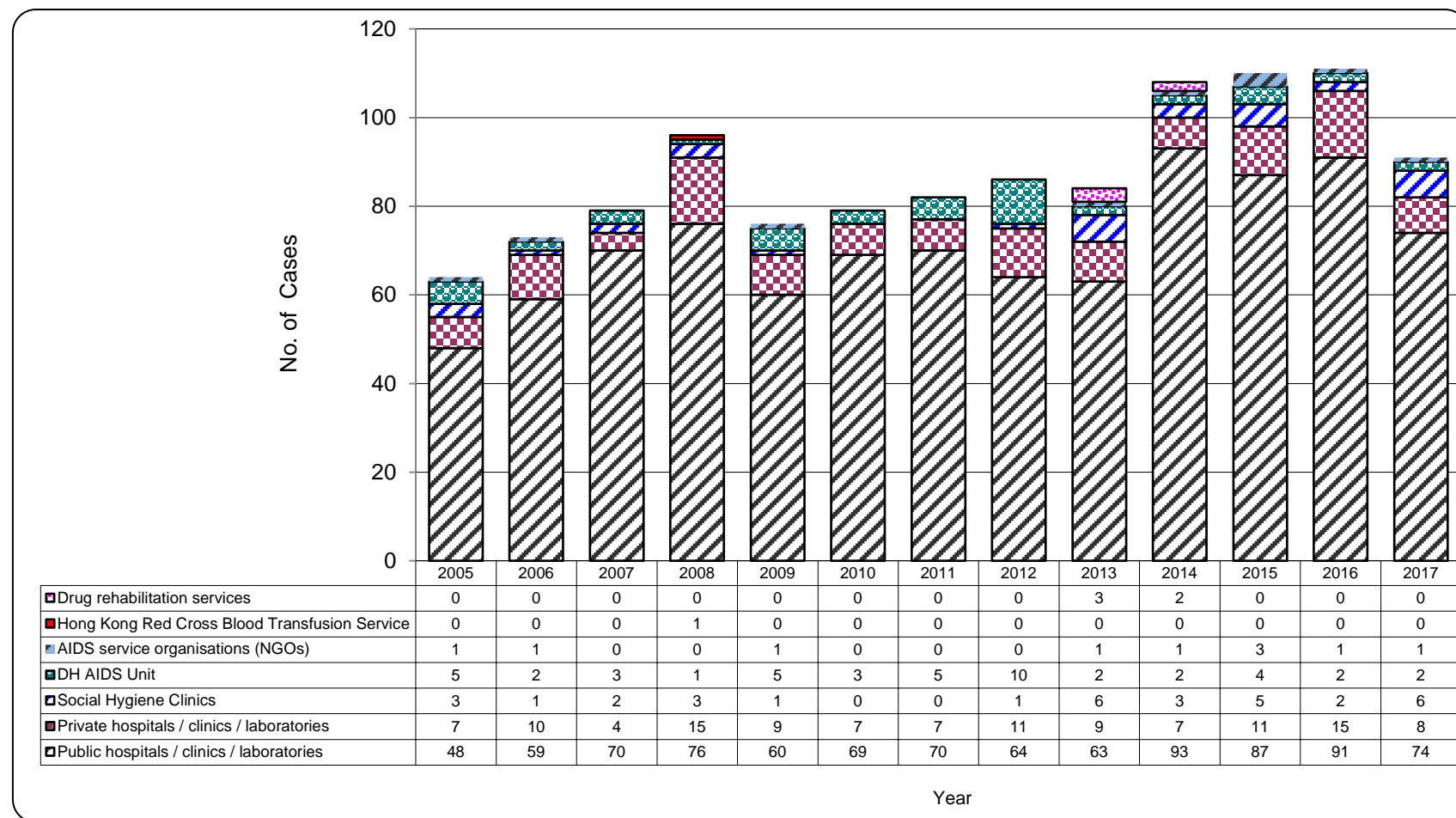


Table 8.2 Source of referral of reported AIDS

	This quarter (Oct - Dec 2017)	Last quarter (Jul - Sep 2017)	Same quarter last year (Oct - Dec 2016)	Cumulative (1984 – 2017)
Public hospitals / clinics / laboratories	24	11	19	1,418
Private hospitals / clinics / laboratories	1	0	4	242
Social Hygiene Clinics	3	0	1	68
DH AIDS unit	0	1	1	101
AIDS service organisations (NGOs)	0	0	0	13
Hong Kong Red Cross Blood Transfusion Service	0	0	0	9
Drug rehabilitation services	0	0	0	6
Total	28	12	25	1,857

Chart 8.2 Source of referral of Reported AIDS

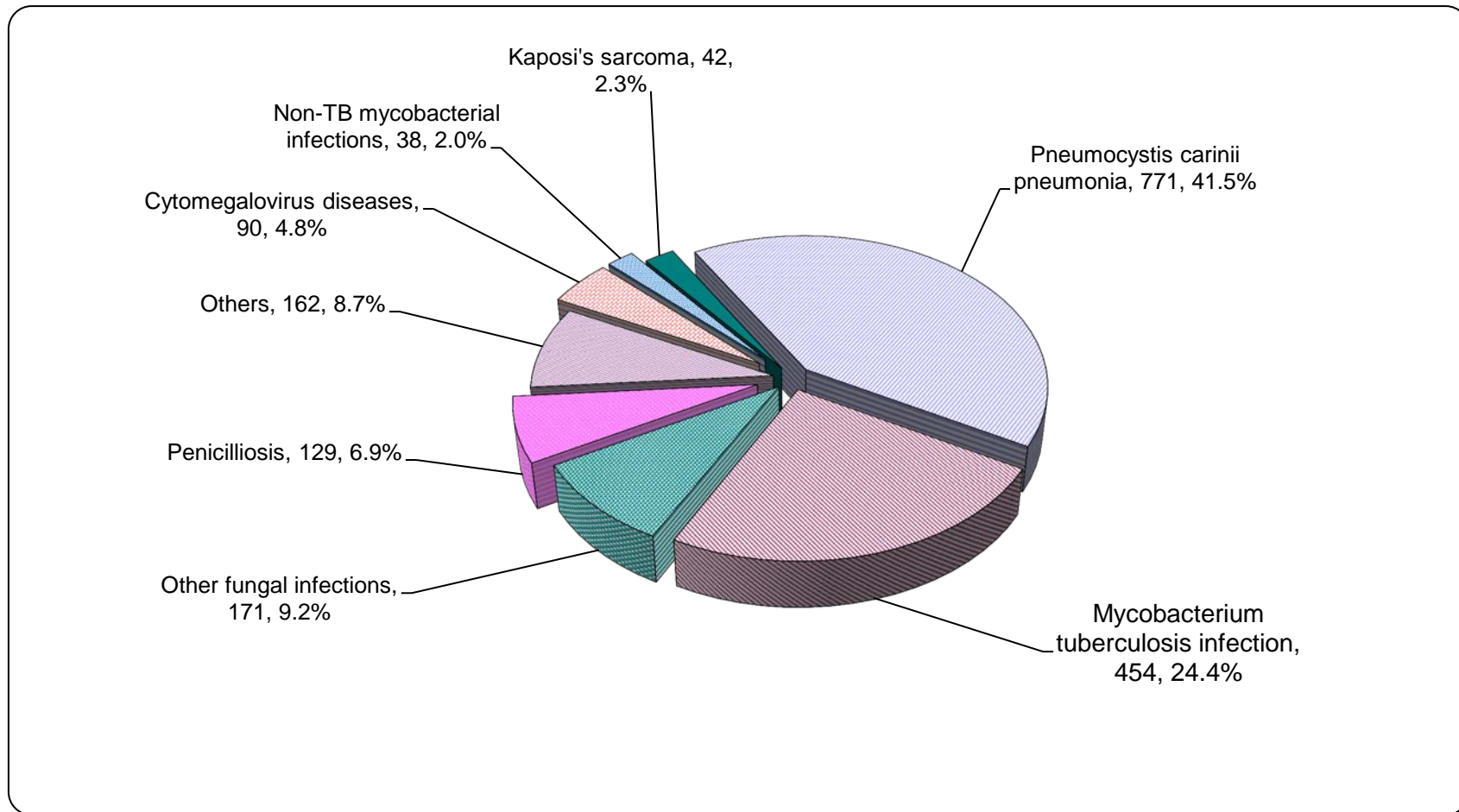


9. Distribution of AIDS defining illnesses

Table 9.1 Distribution of AIDS defining illness of reported AIDS

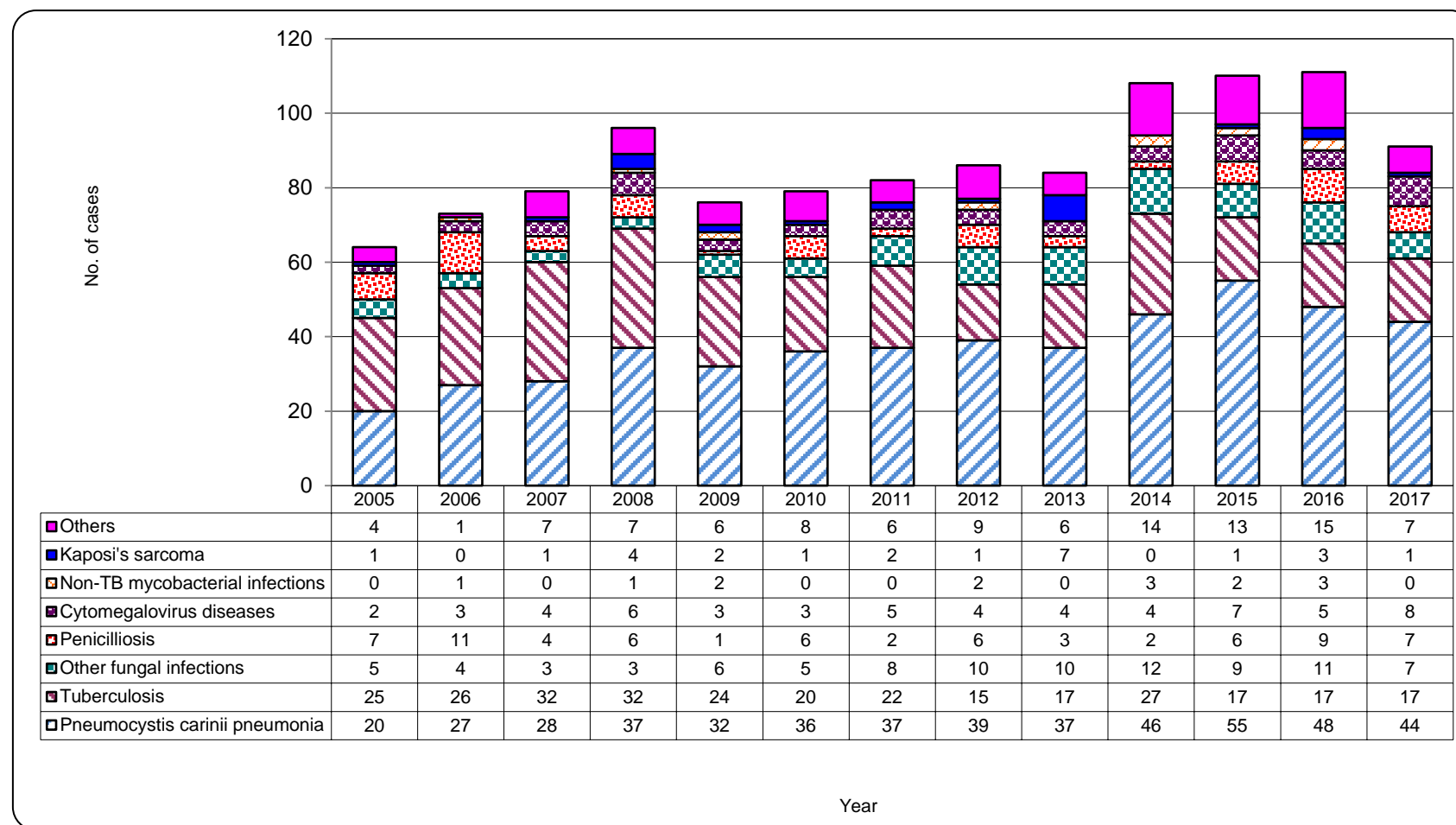
	This quarter (Oct - Dec 2017)	Last quarter (Jul - Sep 2017)	Same quarter last year (Oct - Dec 2016)	Cumulative (1984 – 2017)
<i>Pneumocystis carinii pneumonia</i>	15	5	11	771
<i>Mycobacterium tuberculosis</i>	4	4	3	454
Other fungal infections	1	0	3	171
Penicilliosis	1	1	2	129
Cytomegalovirus diseases	5	2	1	90
Non-TB mycobacterial infections	0	0	0	38
Kaposi's sarcoma	0	0	1	42
Others	2	0	4	162
Total	28	12	25	1,857

Chart 9.1 AIDS defining illness of total reported AIDS



Format: [ADI; Number; %]

Chart 9.2 AIDS defining illness of reported AIDS by year



10. Reported sexually transmitted infections (STIs) diagnosed in Social Hygiene Service

Table 10.1 Summary table on the reported STIs diagnosed in Social Hygiene Service

	This quarter (Oct - Dec 2017)	Last quarter (Jul - Sep 2017)	Same quarter last year (Oct - Dec 2016)	In year 2017
Syphilis				
<i>Primary</i>	24	19	12	69
<i>Secondary</i>	31	41	41	170
<i>Early latent</i>	42	45	57	178
<i>Late latent</i>	178	191	145	690
<i>Late (cardiovascular / neuro /ocular)</i>	2	2	1	6
<i>Congenital (early)</i>	0	0	0	0
<i>Congenital (late)</i>	1	2	1	3
Syphilis total	278	300	257	1,116

(to be cont'd)

Table 10.1 (Cont'd)

	This quarter (Oct - Dec 2017)	Last quarter (Jul - Sep 2017)	Same quarter last year (Oct - Dec 2016)	In year 2017
Gonorrhoea	351	407	415	1,593
Non-gonococcal urethritis (Male)	786	875	891	3,466
Non-specific genital infection (Female)	520	649	543	2,374
Genital wart	445	565	448	2,007
<i>Herpes genitalis</i>	177	208	182	751
Pediculosis pubis	3	5	6	15
Trichomonas	72	80	77	326
Genital ulcer	4	6	4	13
Chancroid / <i>Lymphogranuloma venereum</i>	0	0	0	0
Others	291	372	312	1,272
Total	2,927	3,467	3,135	12,933

11. Gender distribution of reported STIs

Table 11.1 Gender distribution of selected STI reported by Social Hygiene Service

	This quarter (Oct - Dec 2017)	Last quarter (Jul - Sep 2017)	Same quarter last year (Oct - Dec 2016)	In year 2017
Primary Syphilis				
Male (M)	24	19	12	69
Female (F)	0	0	0	0
M:F	N.A.	N.A.	N.A.	N.A.
Gonorrhoea				
Male (M)	313	359	361	1,389
Female (F)	38	48	54	204
M:F	8.2 : 1	7.5 : 1	6.7 : 1	6.8 : 1
NGU / NSGI *				
Male (M)	786	875	891	3,466
Female (F)	520	649	543	2,374
M:F	1.5 : 1	1.3 : 1	1.6 : 1	1.5 : 1

(to be cont'd)

Table 11.1 (Cont'd)

	This quarter (Oct - Dec 2017)	Last quarter (Jul - Sep 2017)	Same quarter last year (Oct - Dec 2016)	In year 2017
Genital wart				
Male (M)	345	422	325	1,486
Female (F)	100	143	123	521
M:F	3.5 : 1	3.0 : 1	2.6 : 1	2.9 : 1
<i>Herpes genitails</i>				
Male (M)	125	135	109	495
Female (F)	52	73	73	256
M:F	2.4 : 1	1.8 : 1	1.5 : 1	1.9 : 1

* NGU = Non-gonococcal urethritis

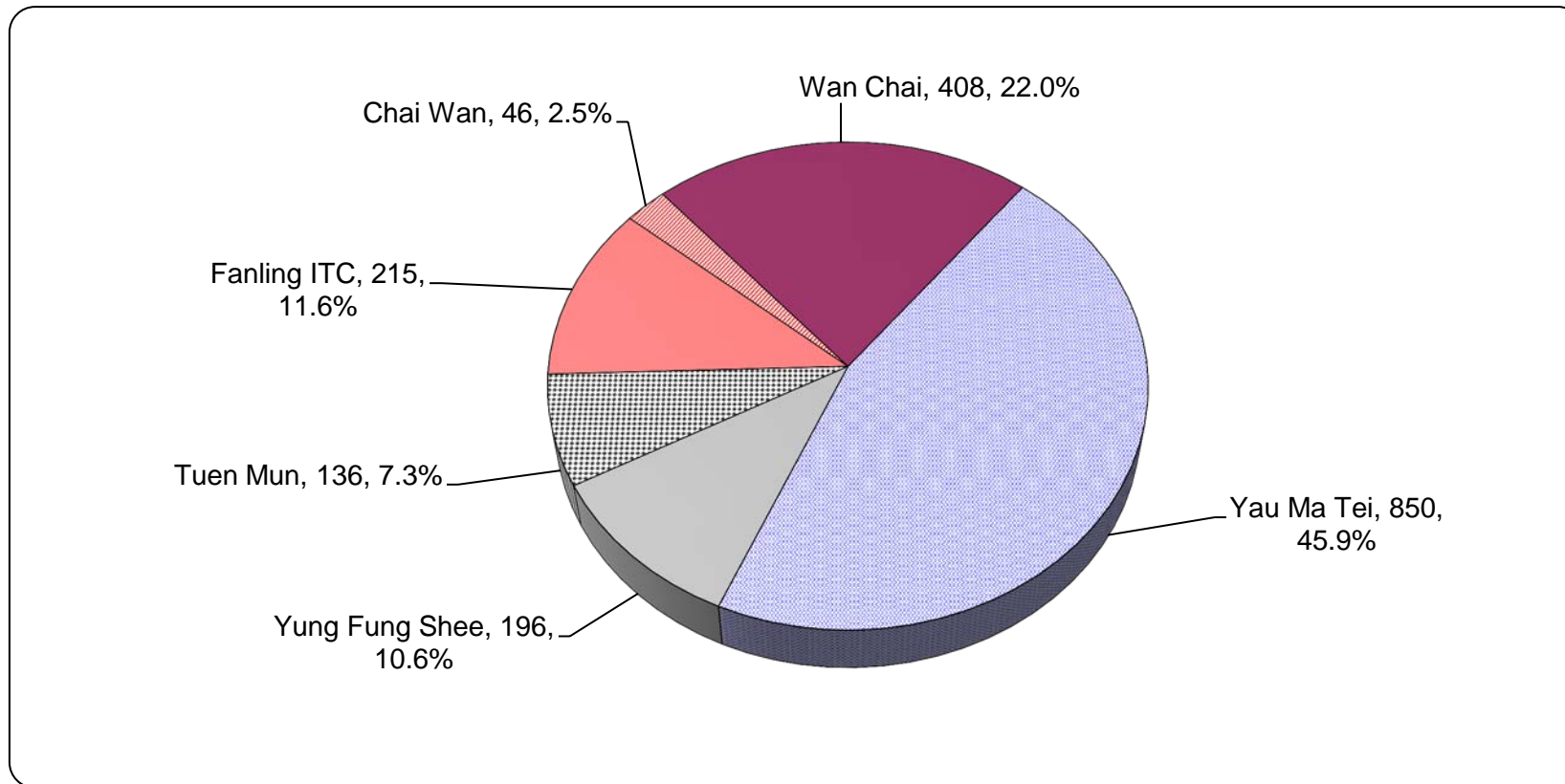
NSGI = Non-specific genital infection

Table 11.2 Gender distribution of reported STI by clinic

	This quarter (Oct - Dec 2017)		Last quarter (Jul - Sep 2017)		Same quarter last year (Oct - Dec 2016)		In year 2017	
	Male	Female	Male	Female	Male	Female	Male	Female
Chai Wan	46	30	54	32	49	28	209	125
Wan Chai	408	231	441	257	432	241	1,754	976
Yau Ma Tei	850	521	1,001	718	942	557	3,659	2,468
Yung Fung Shee	196	89	241	92	203	104	922	388
Tuen Mun	136	76	172	105	161	98	632	388
Fanling ITC	215	129	216	138	195	125	868	544
Total	1,851	1,076	2,125	1,342	1,982	1,153	8,044	4,889

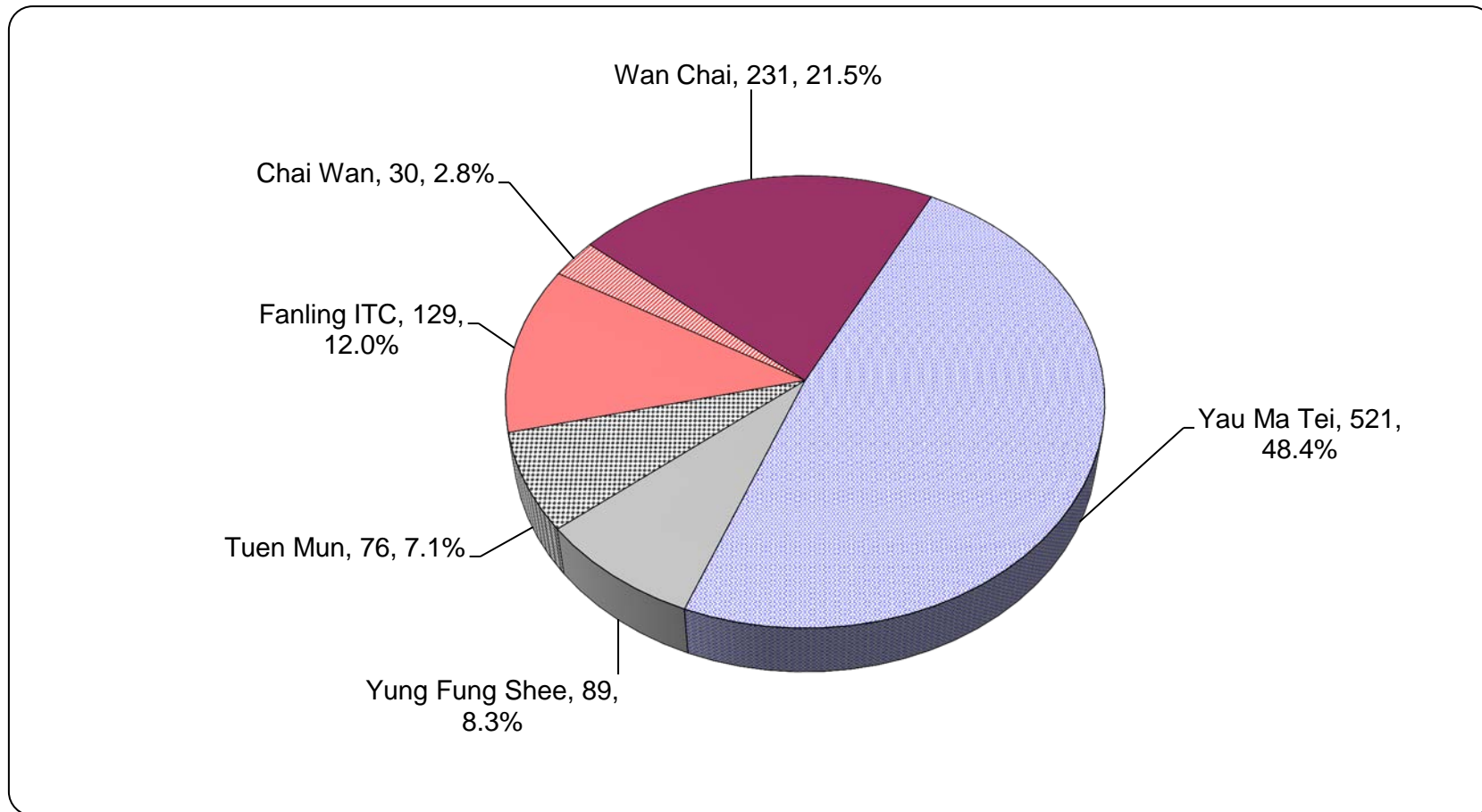
12. Clinic distribution

Chart 12.1 Number of newly report STI in Q4 2017 by clinic (male clients)



Format : [Clinic ; Number ; %]

Chart 12.2 Number of newly report STI in Q4 2017 by clinic (female clients)



Format : [Clinic ; Number ; %]