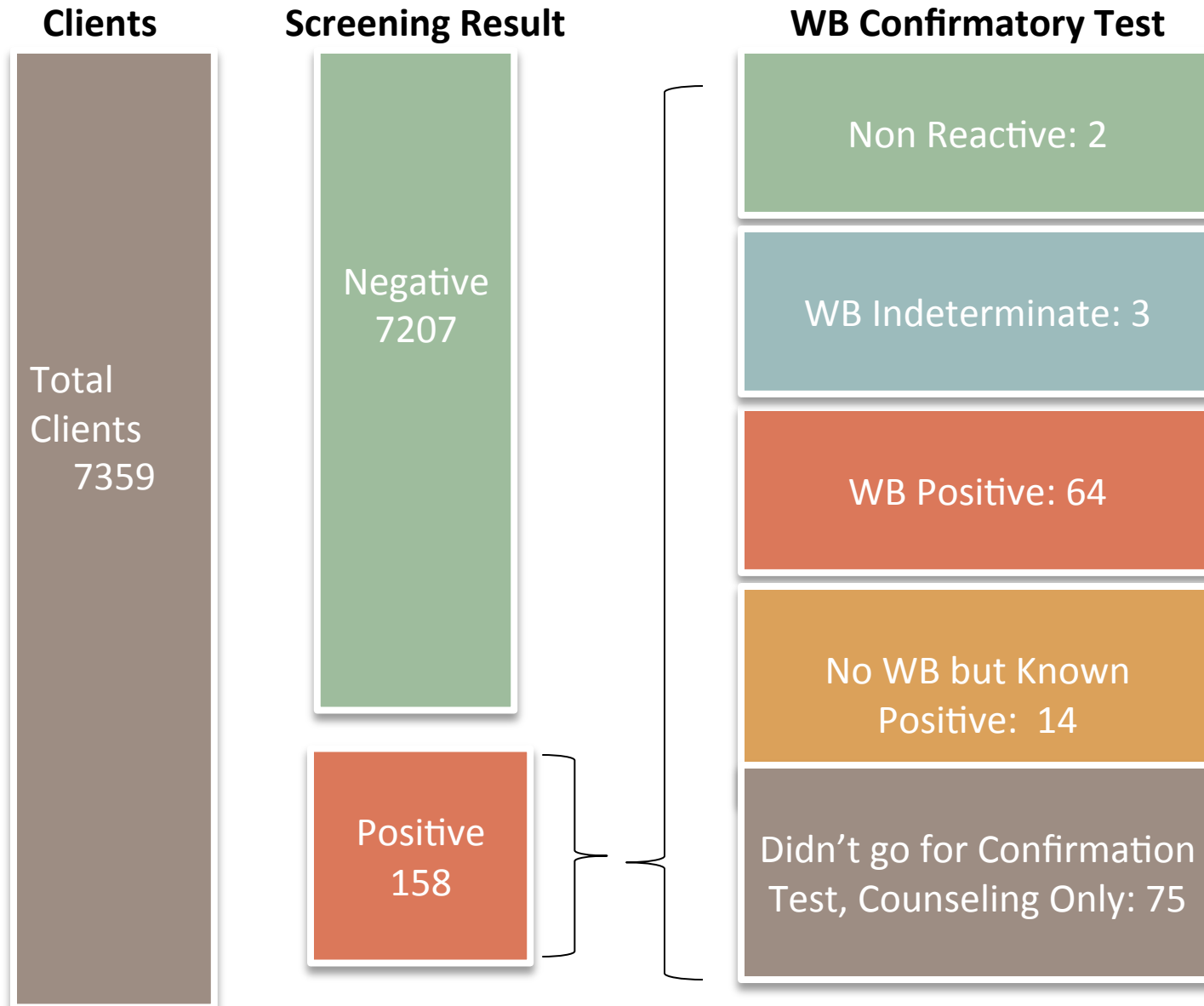


# ANONYMOUS TEST SITE STATISTICS 2013

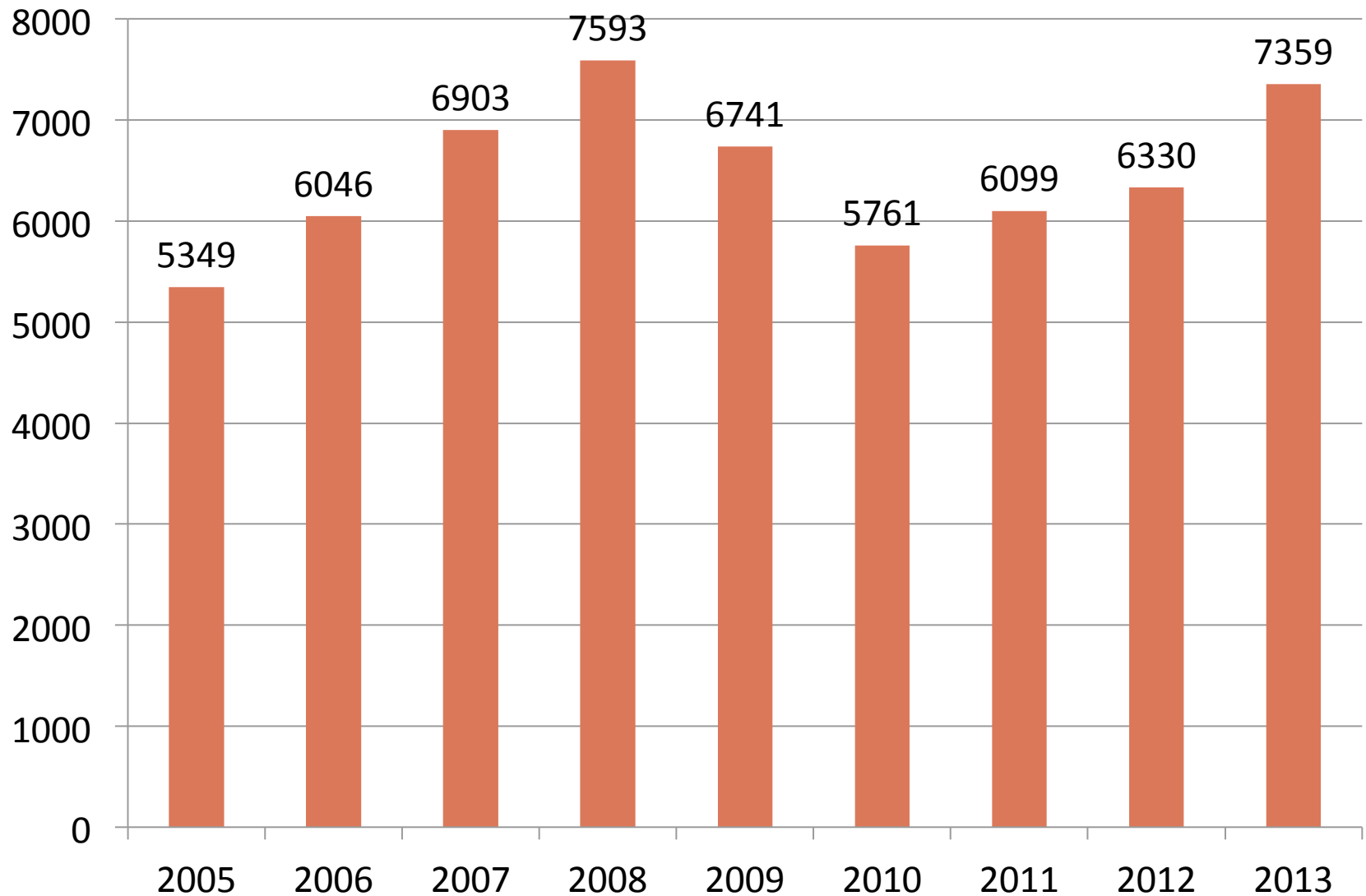
# HIV RAPID TEST RESULTS - 2013



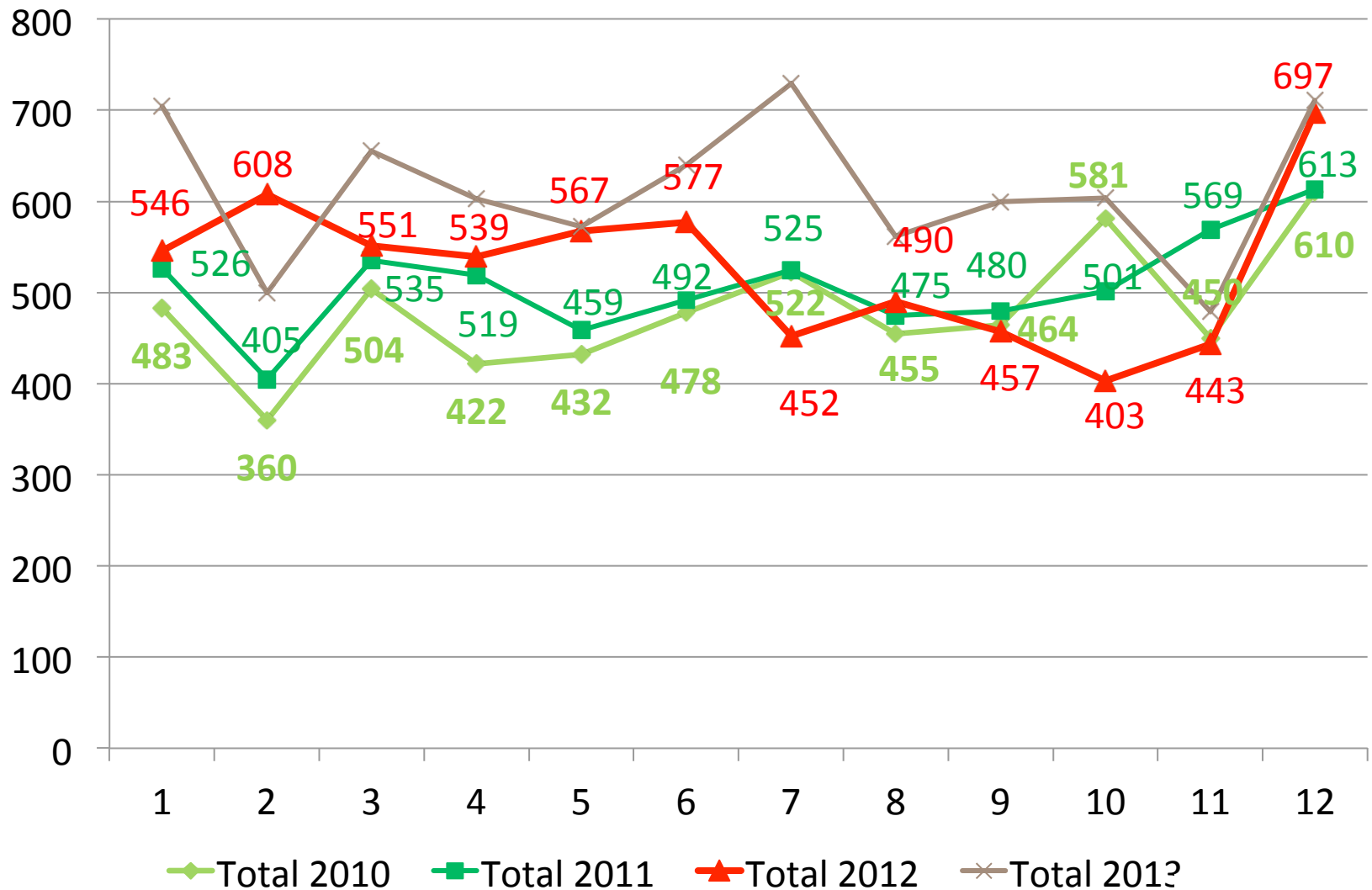
## TEST RESULTS - 2013

	Determine HIV	OraQuick	Determine Syphilis
Total	7154	47	1789
Positives	155	0	11
%	2.17%	0%	0.61%

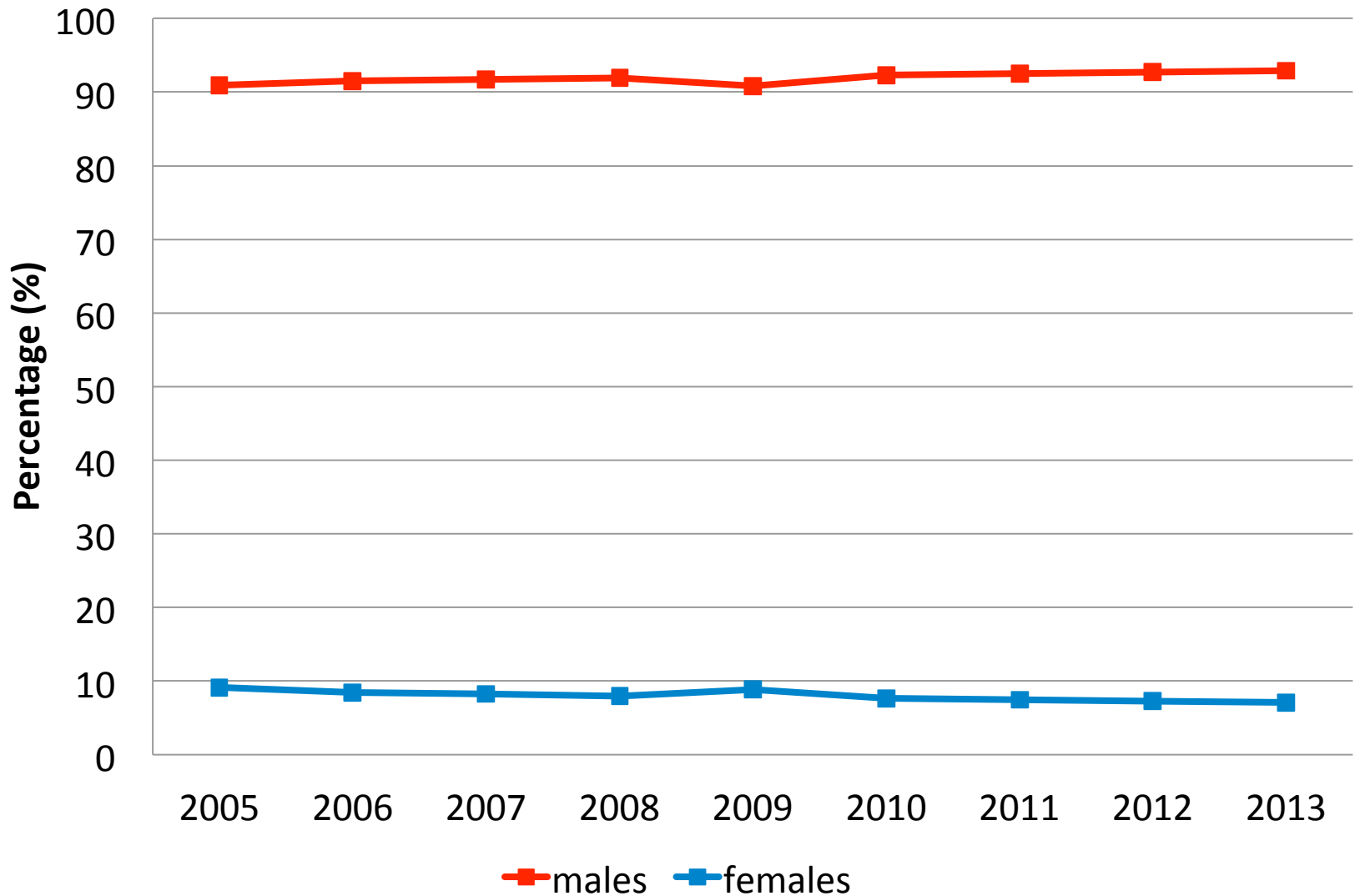
## TOTAL NUMBER OF CLIENTS – 2005 TO 2013



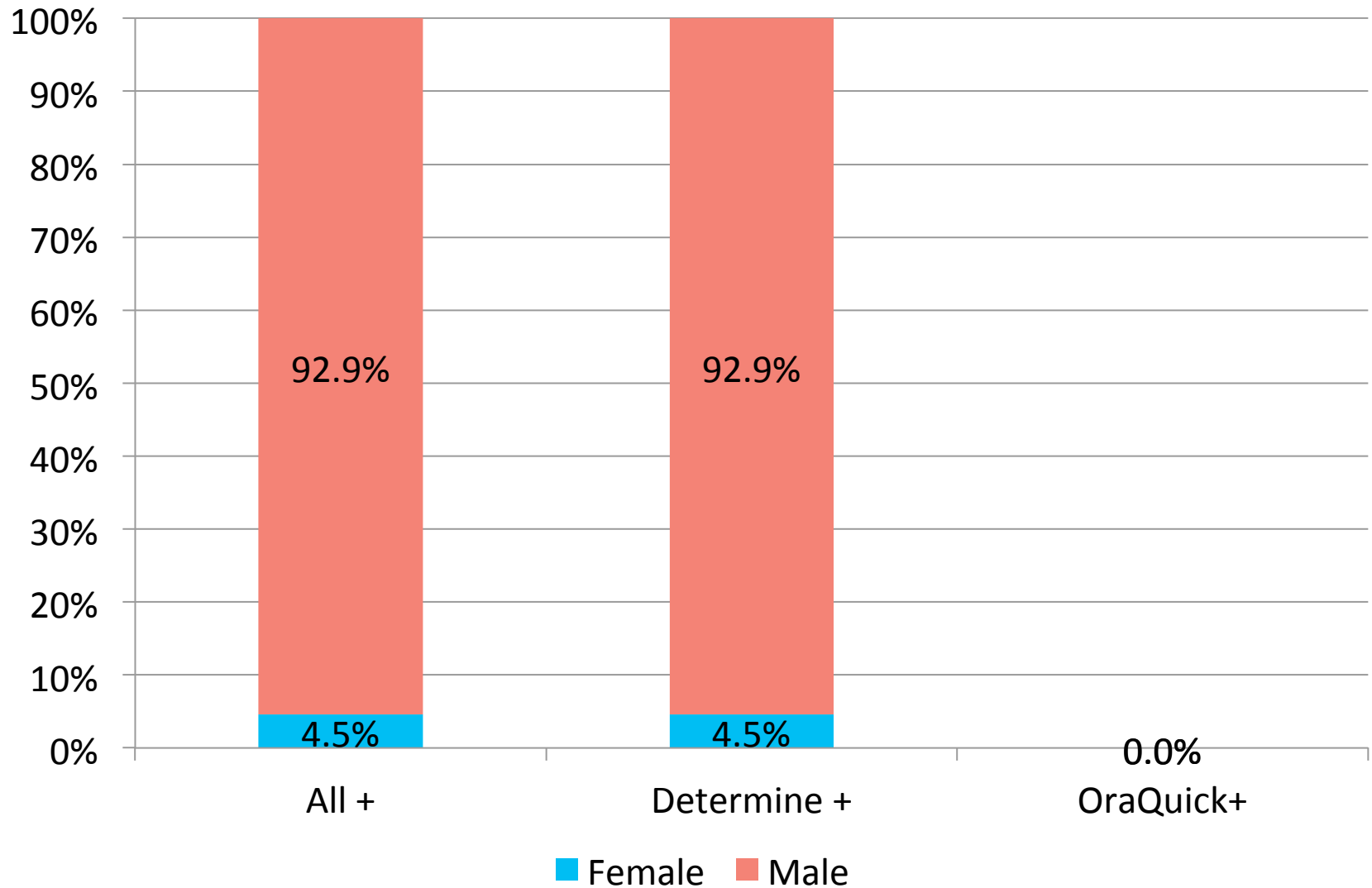
# TOTAL NUMBER OF CLIENTS FOR 2010 TO 2013 - BY MONTH



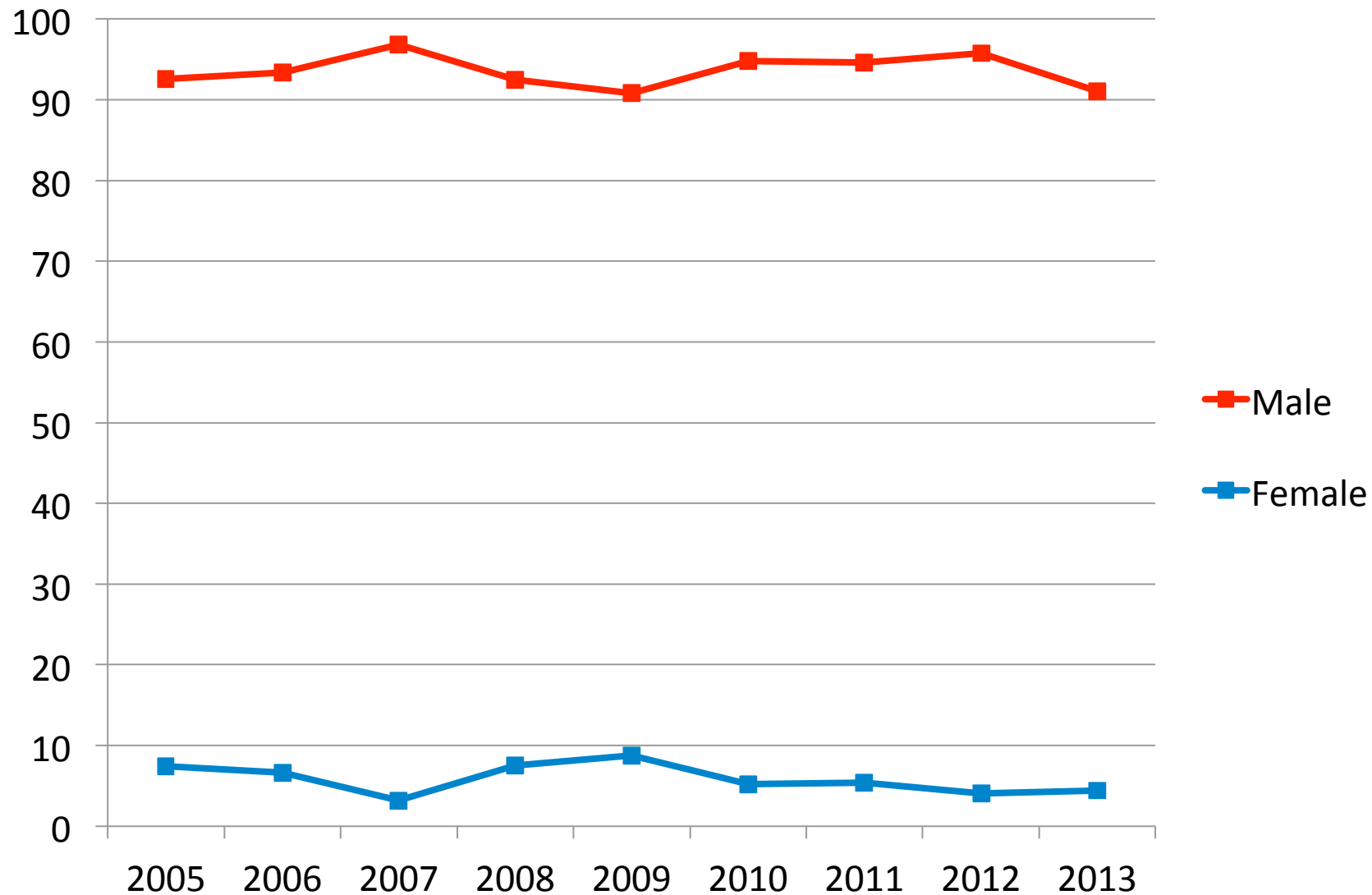
## PERCENTAGE OF CLIENTS BY GENDER – 2005 TO 2013



# PERCENTAGE OF RAPID + CLIENTS BY TYPE OF TEST AND GENDER – 2013

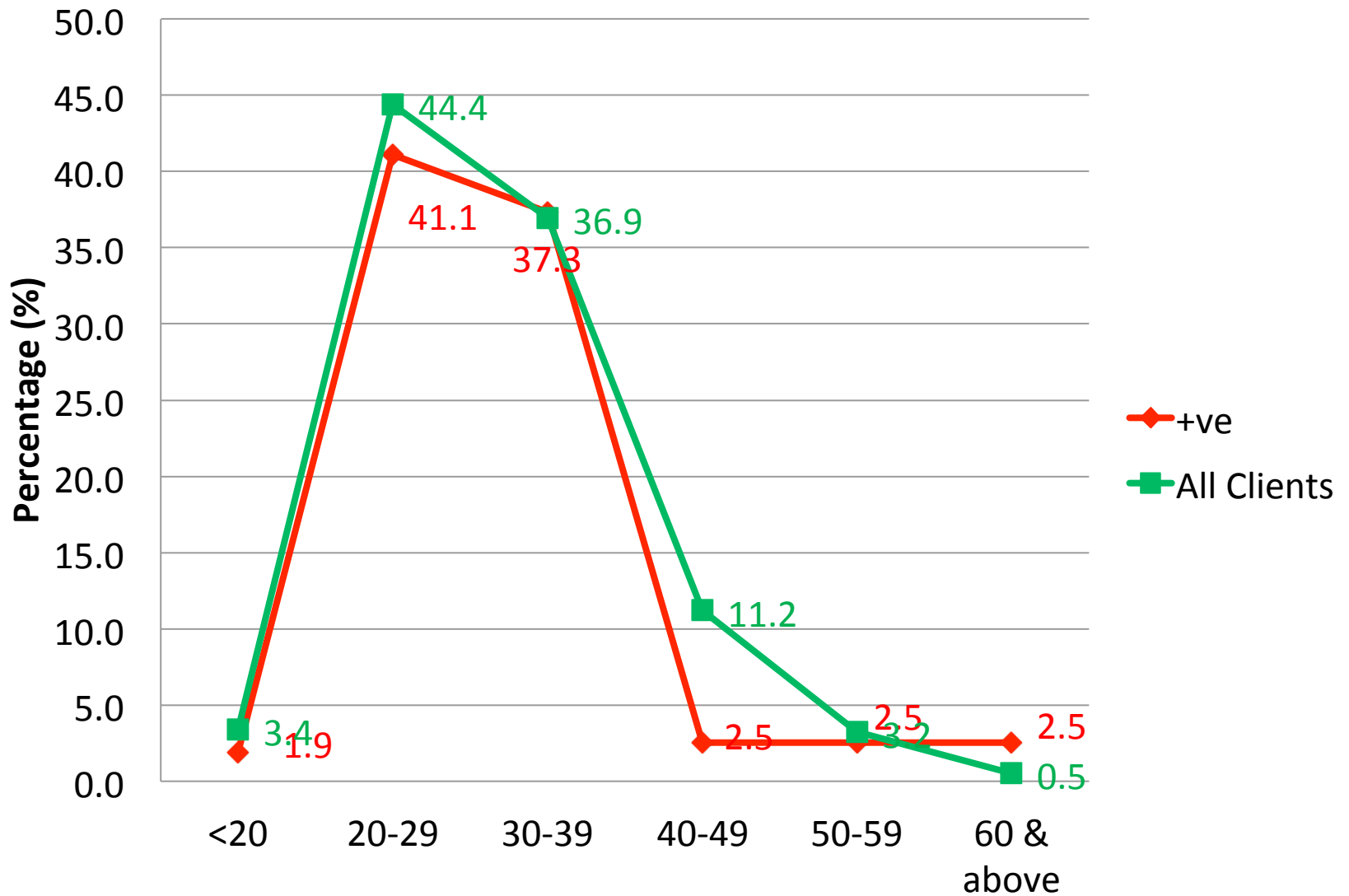


## PERCENTAGE OF RAPID + CLIENTS BY GENDER – 2005 TO 2013

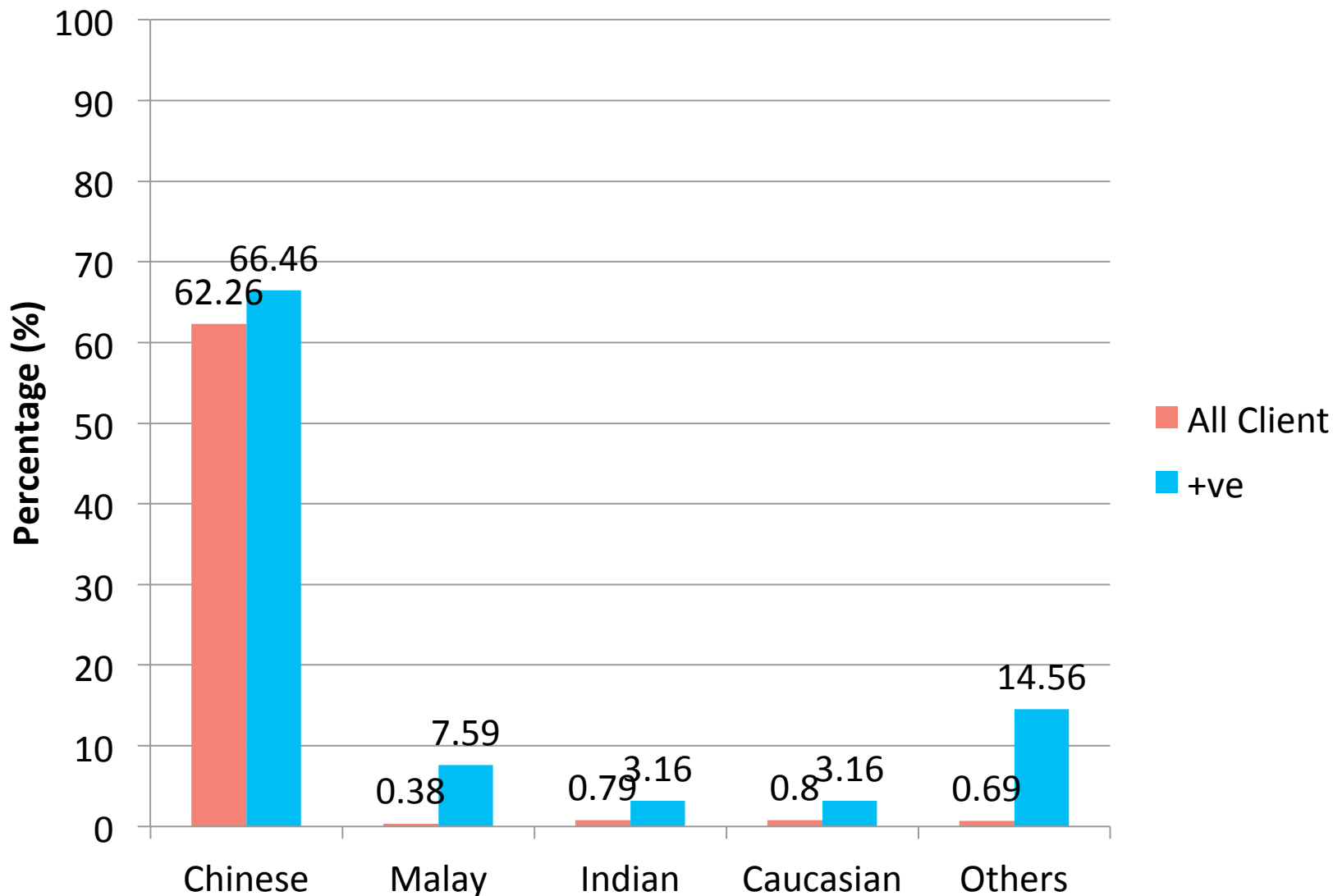




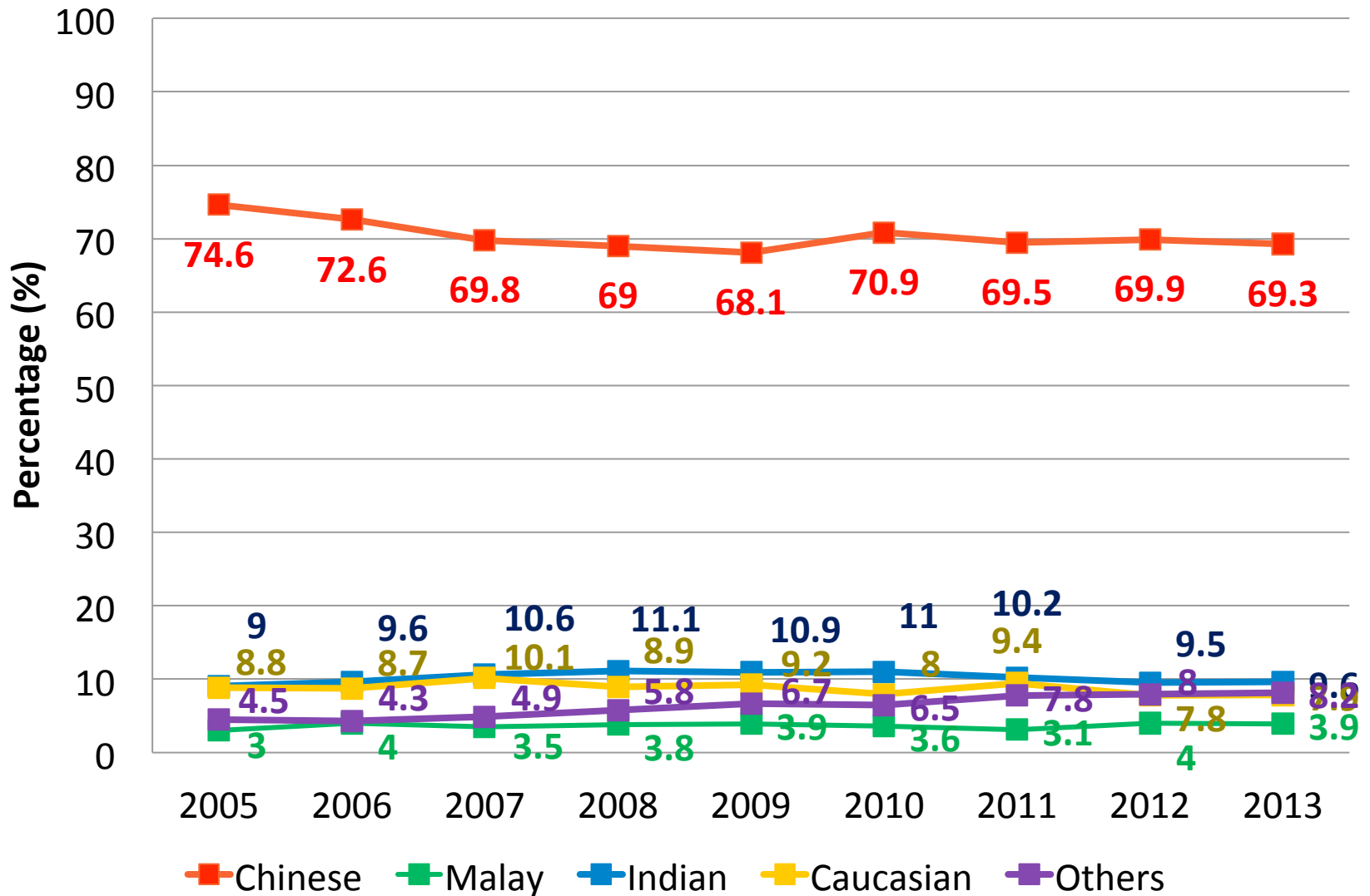
# ALL CLIENTS & RAPID + CLIENTS BY AGE GROUPS – 2013



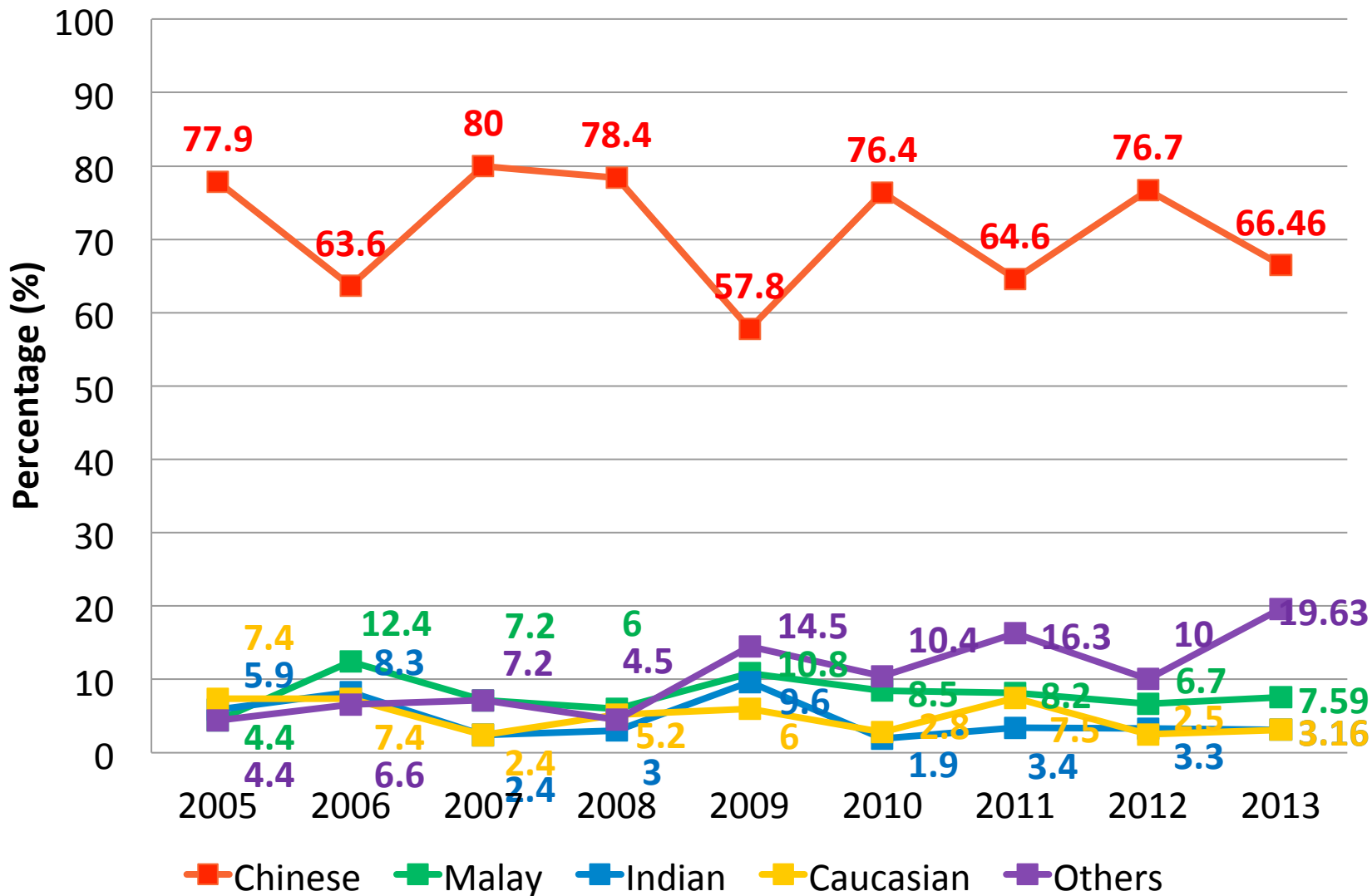
## ALL CLIENTS AND RAPID + CLIENTS BY ETHNICITY – 2013



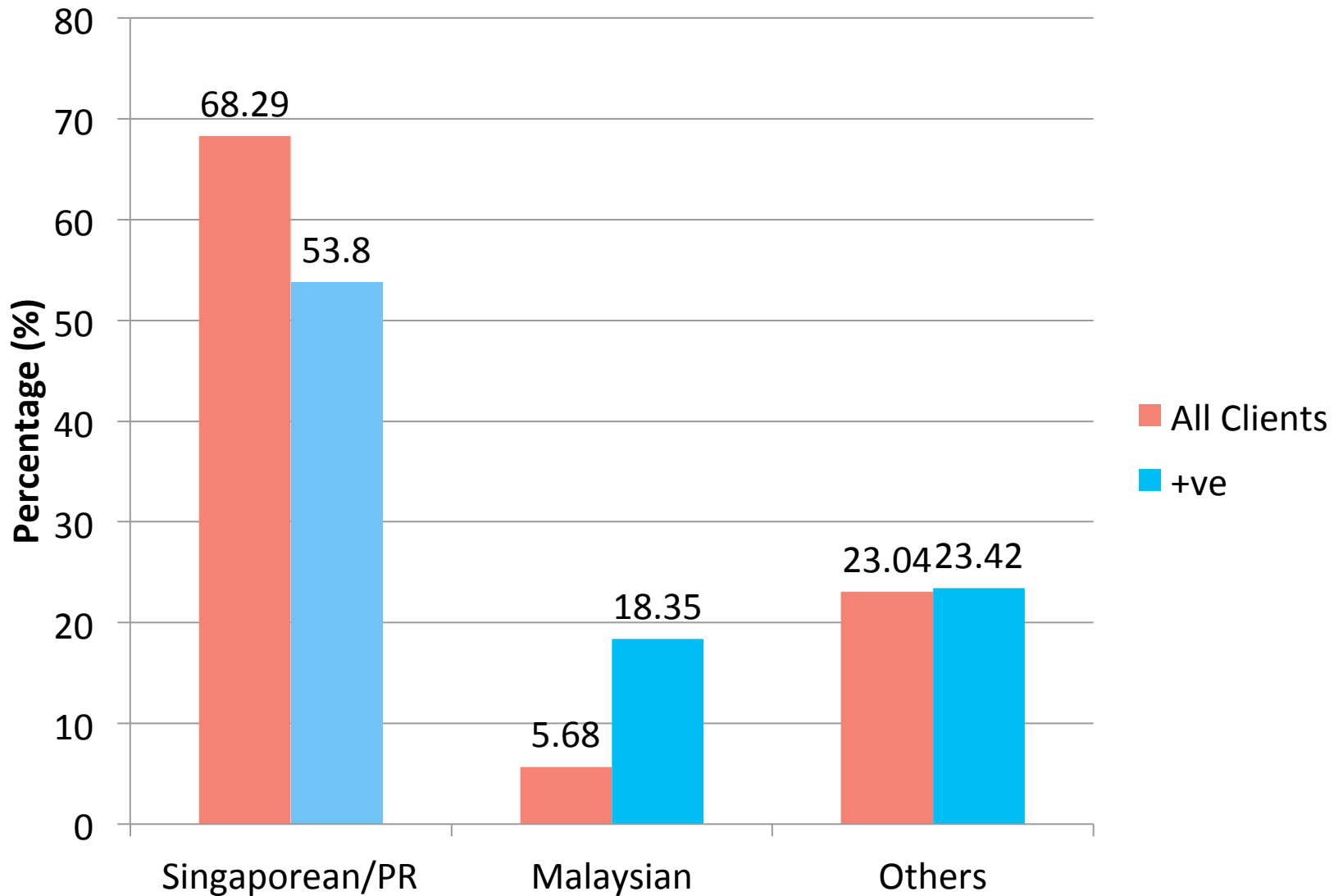
# ALL CLIENTS BY ETHNICITY – 2005 TO 2013



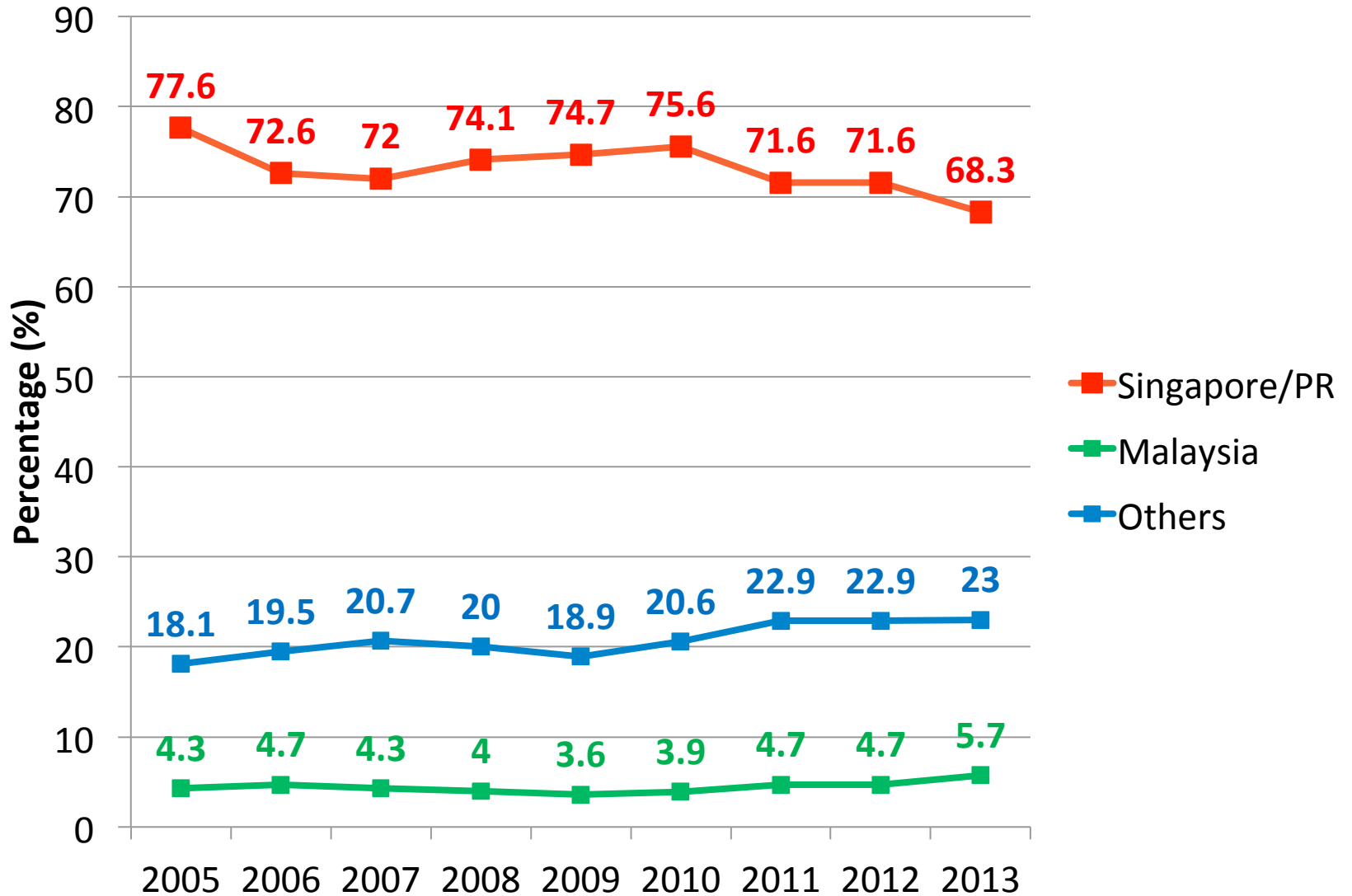
# RAPID + CLIENTS BY ETHNICITY – 2005 TO 2013



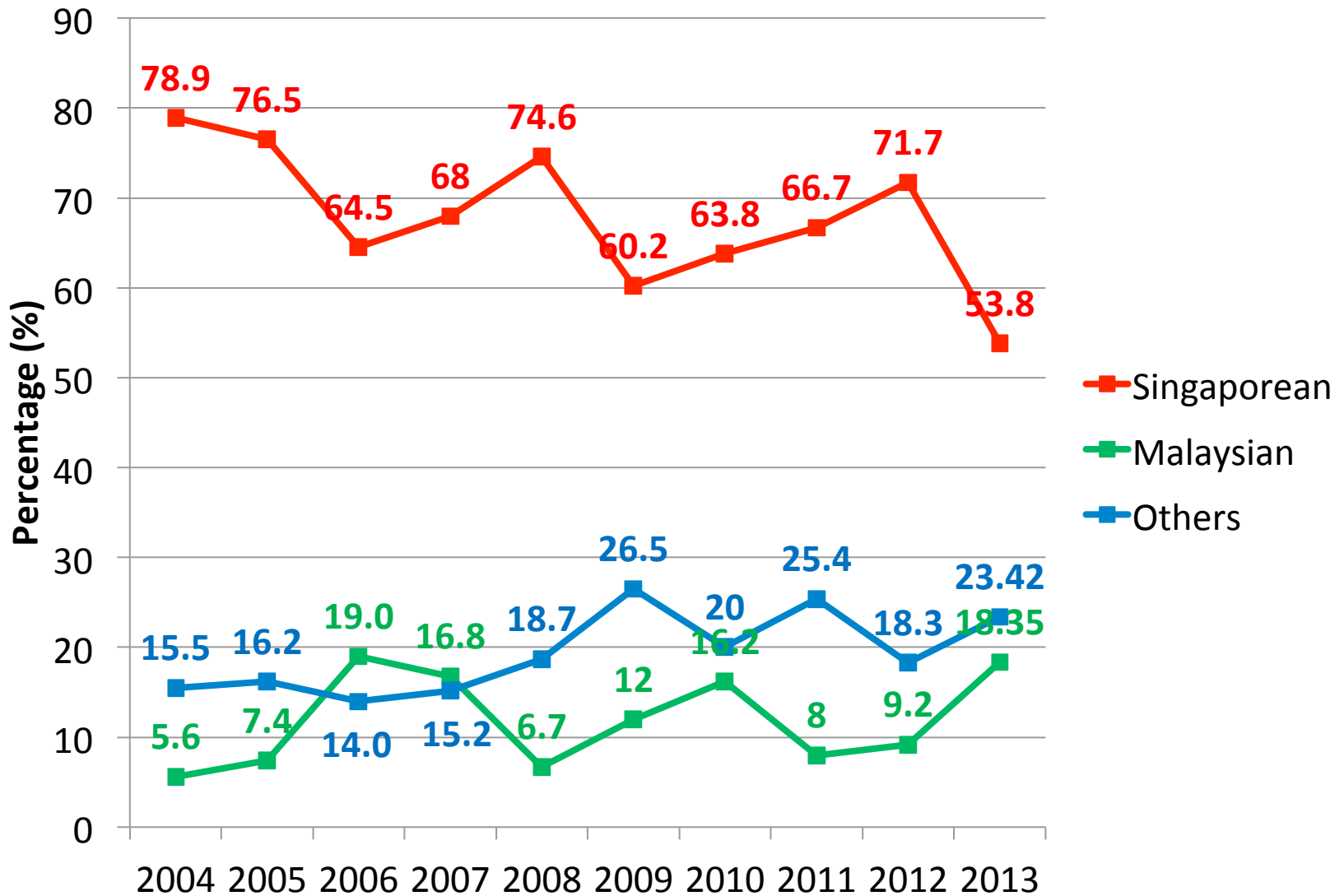
## ALL CLIENTS AND RAPID + CLIENTS BY NATIONALITY – 2013



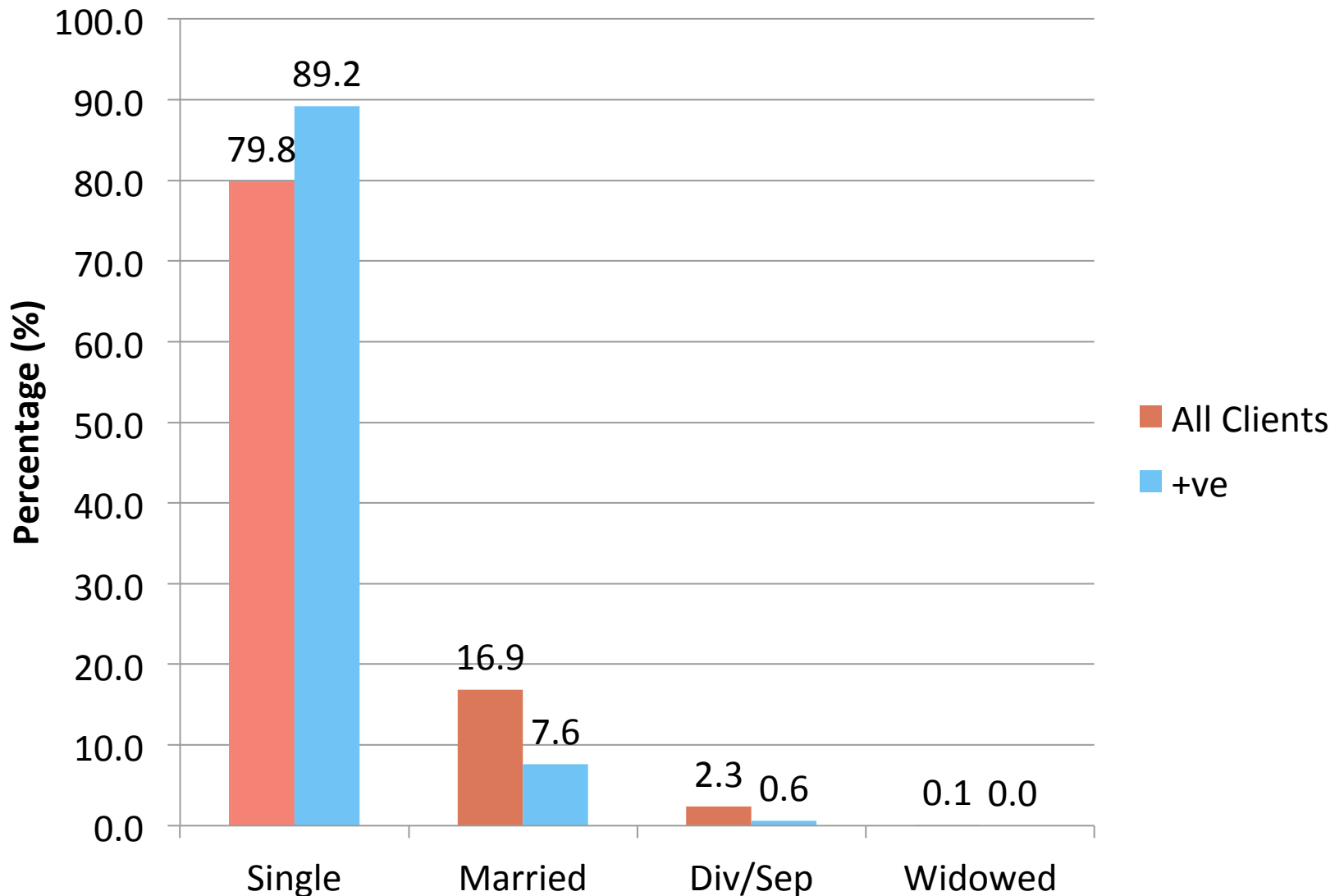
## ALL CLIENTS BY NATIONALITY – 2005 TO 2013



# RAPID + CLIENTS BY NATIONALITY – 2005 TO 2013

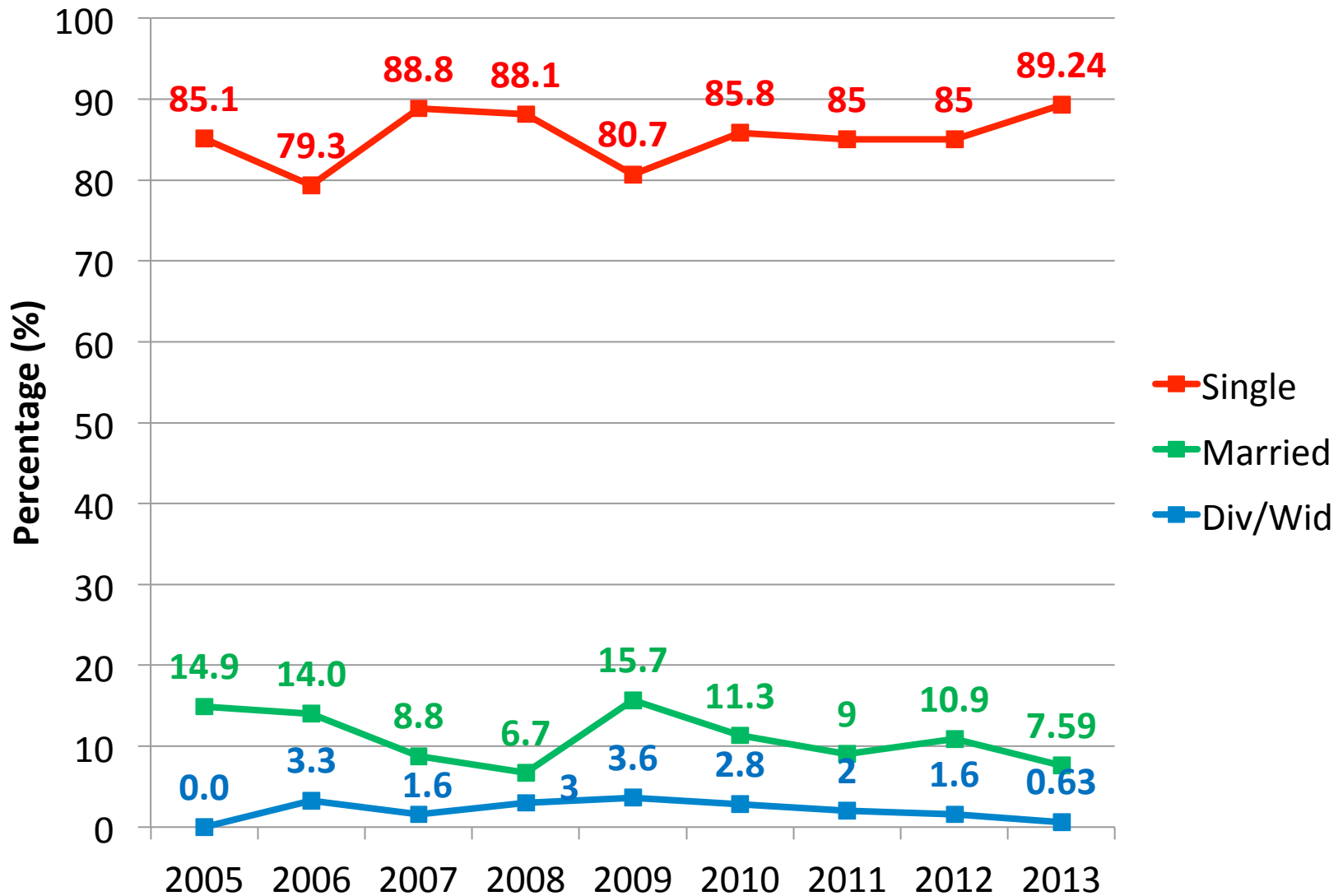


# ALL CLIENTS AND RAPID + CLIENTS BY MARTIAL STATUS – 2013

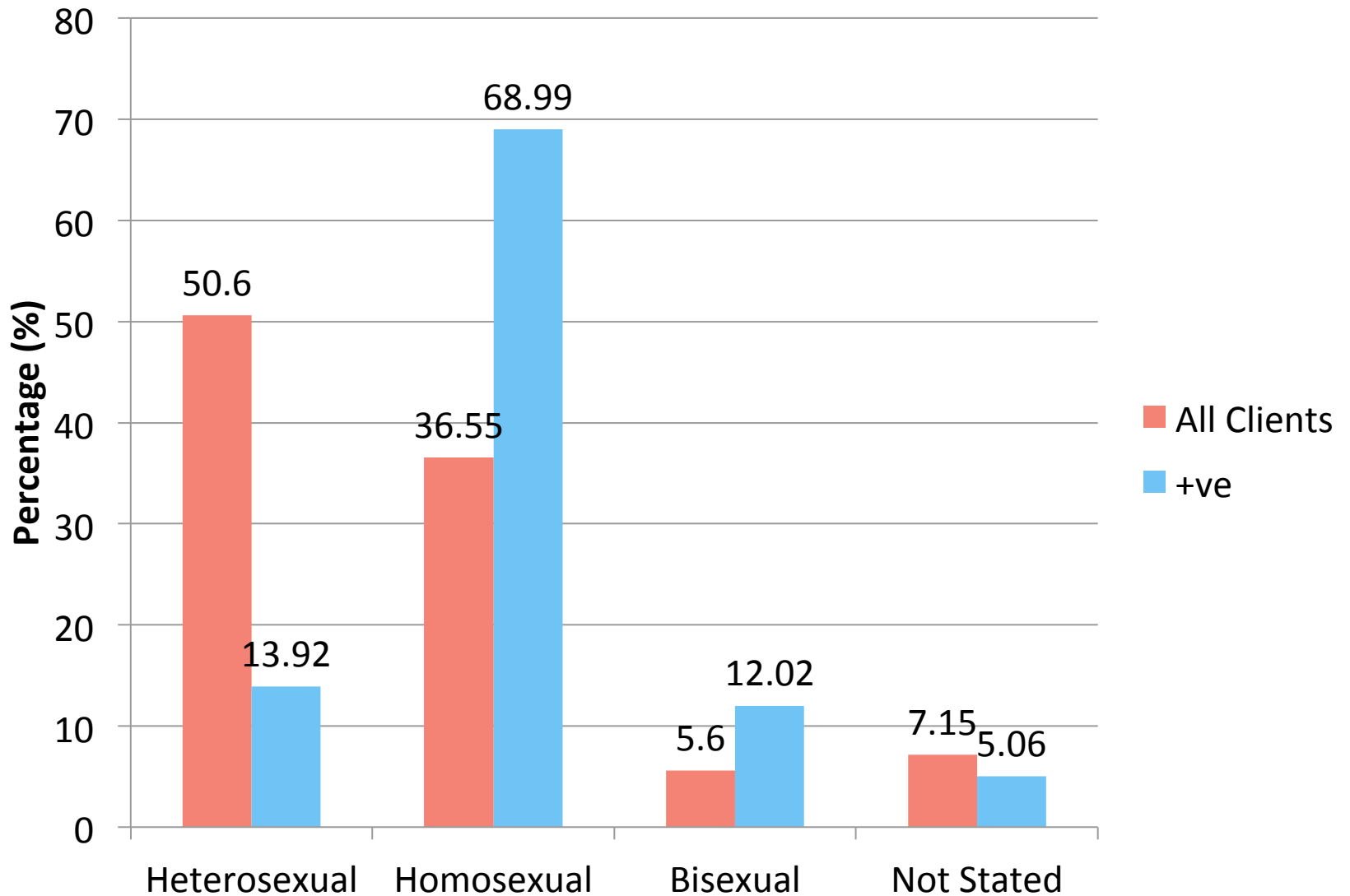




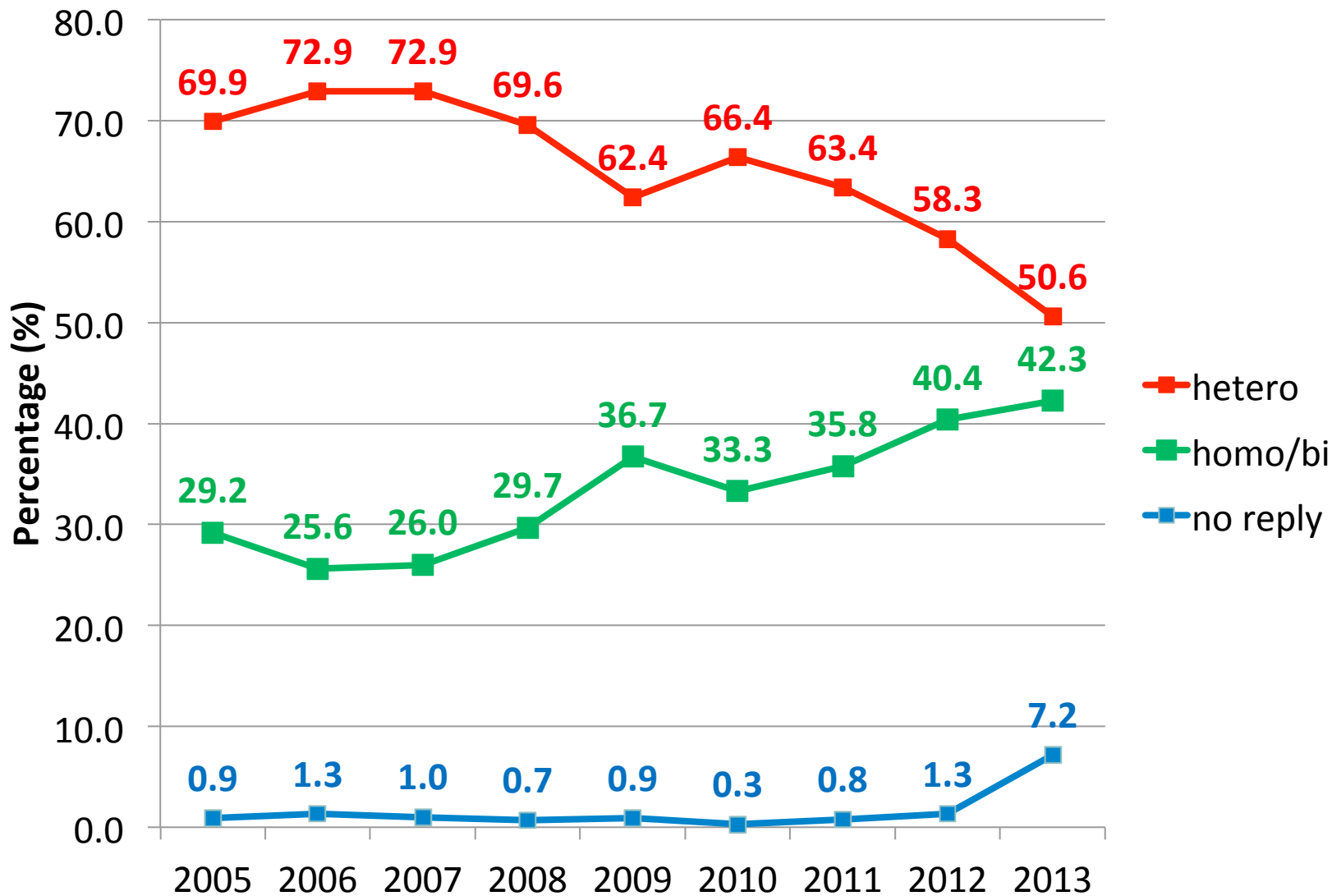
## RAPID + CLIENTS BY MARITAL STATUS – 2005 TO 2013



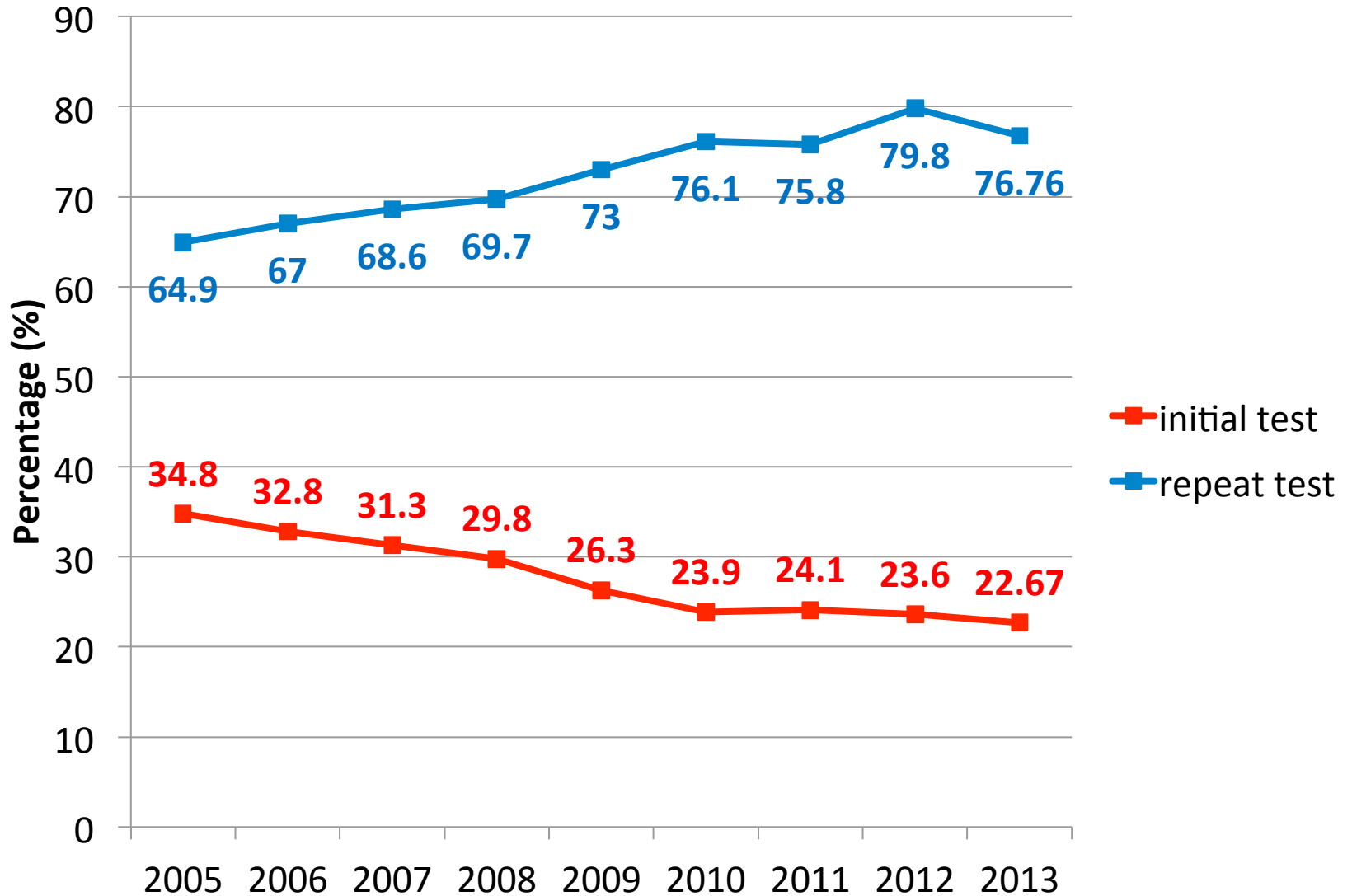
# ALL CLIENTS AND RAPID + CLIENTS BY SEXUAL ORIENTATION – 2013



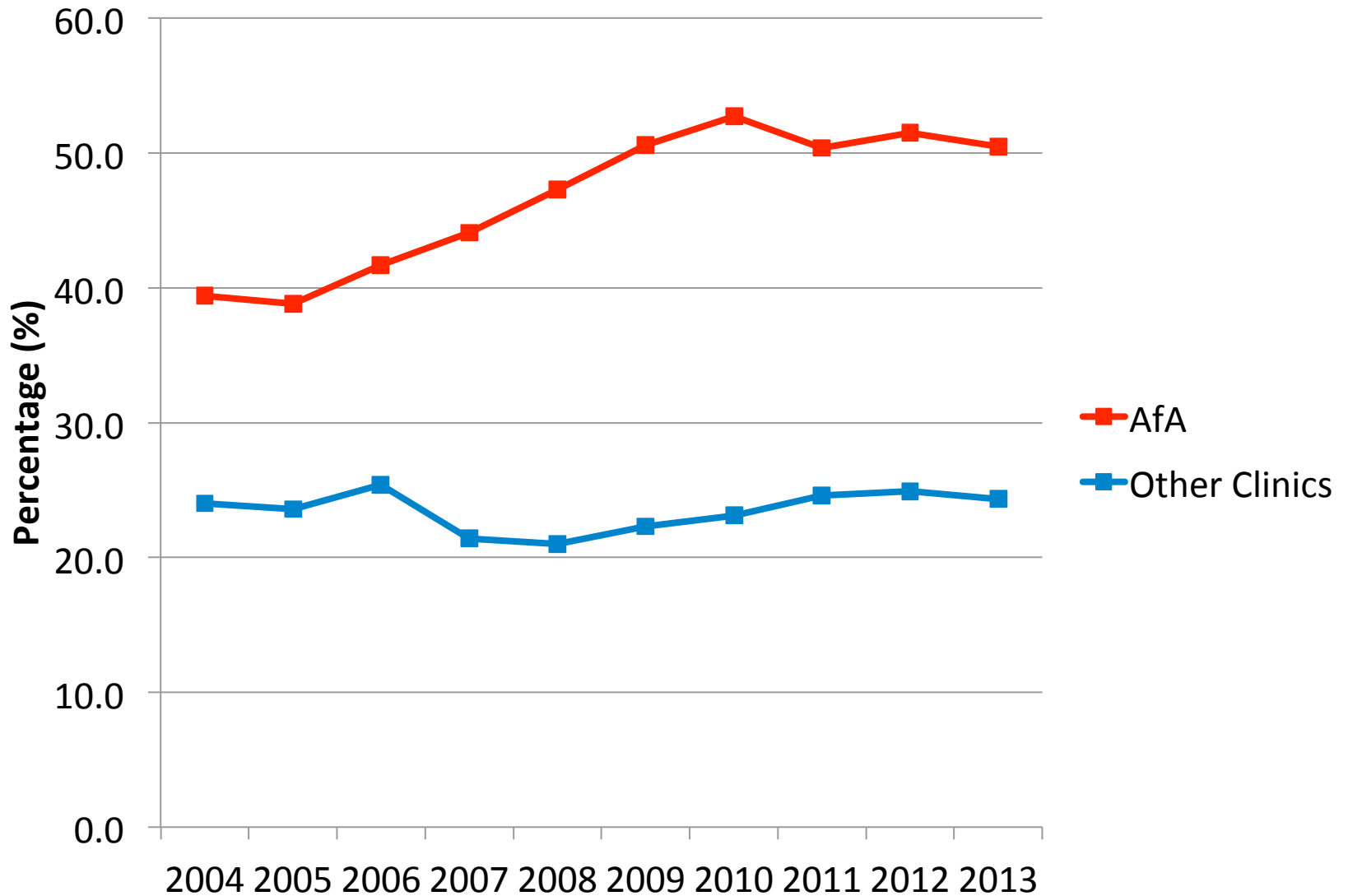
## ALL CLIENTS BY SEXUAL ORIENTATION – 2005 TO 2013



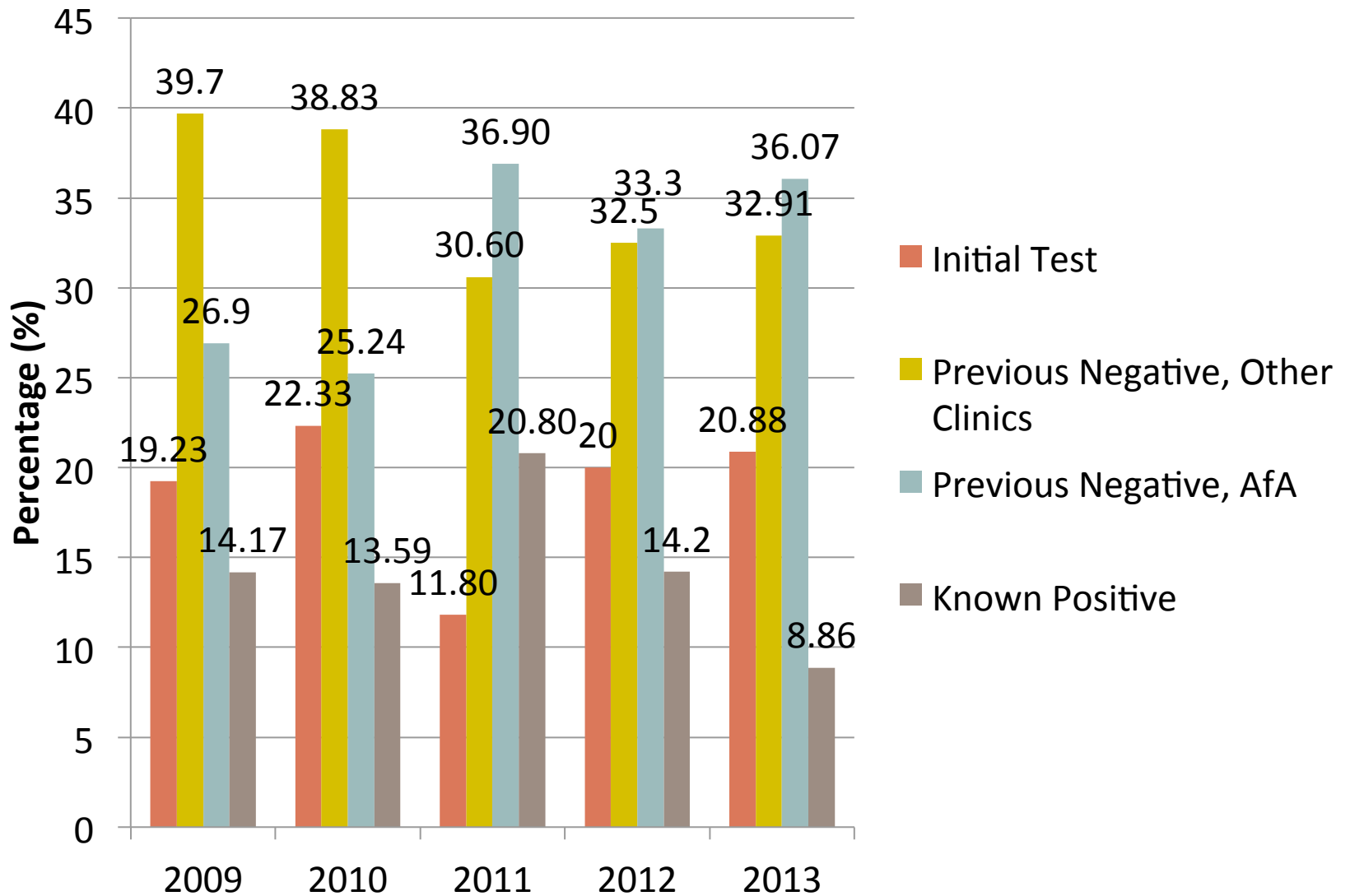
## ALL CLIENTS BY TESTING HISTORY – 2005 TO 2013



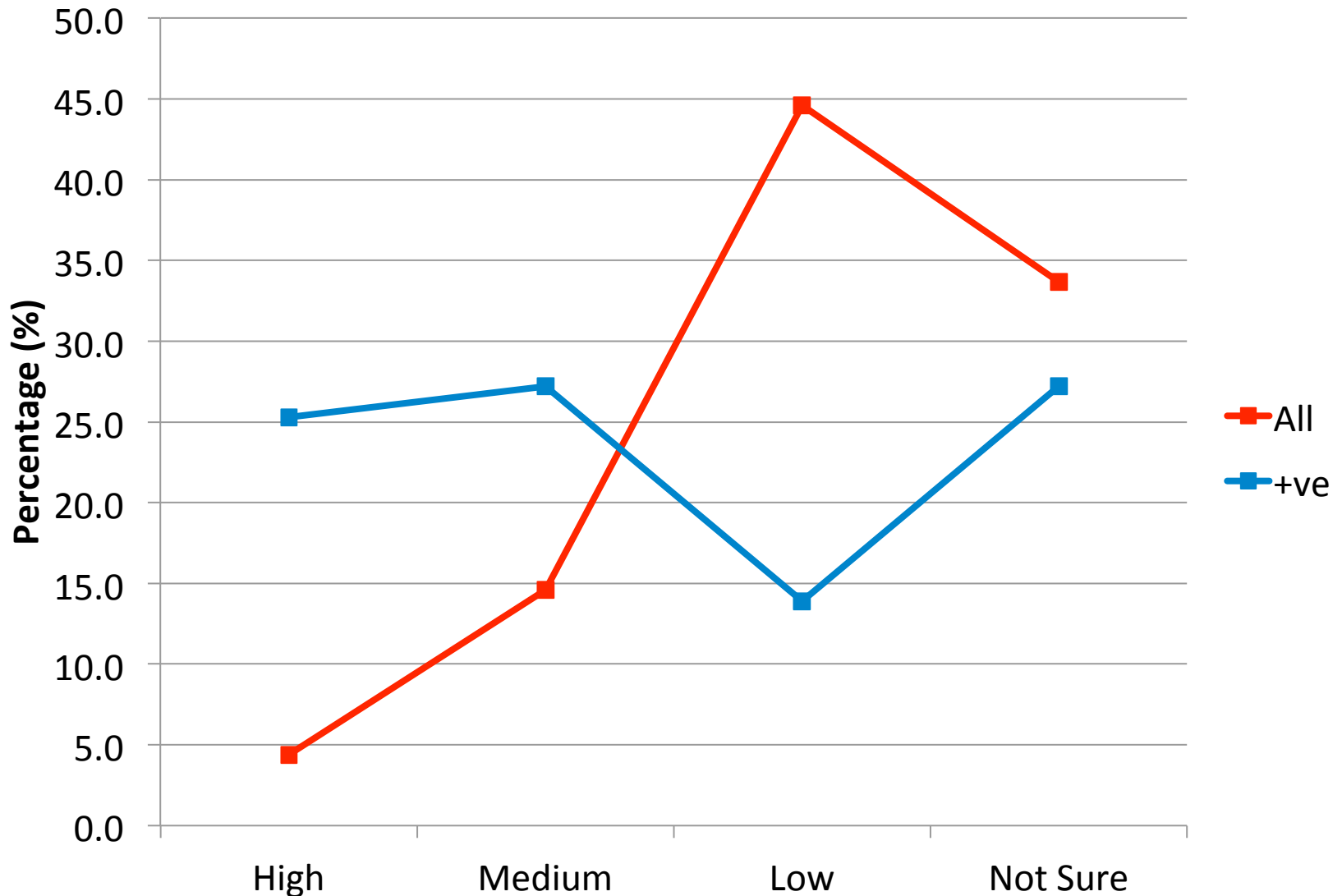
## VENUE OF PREVIOUS TEST – 2005 TO 2013



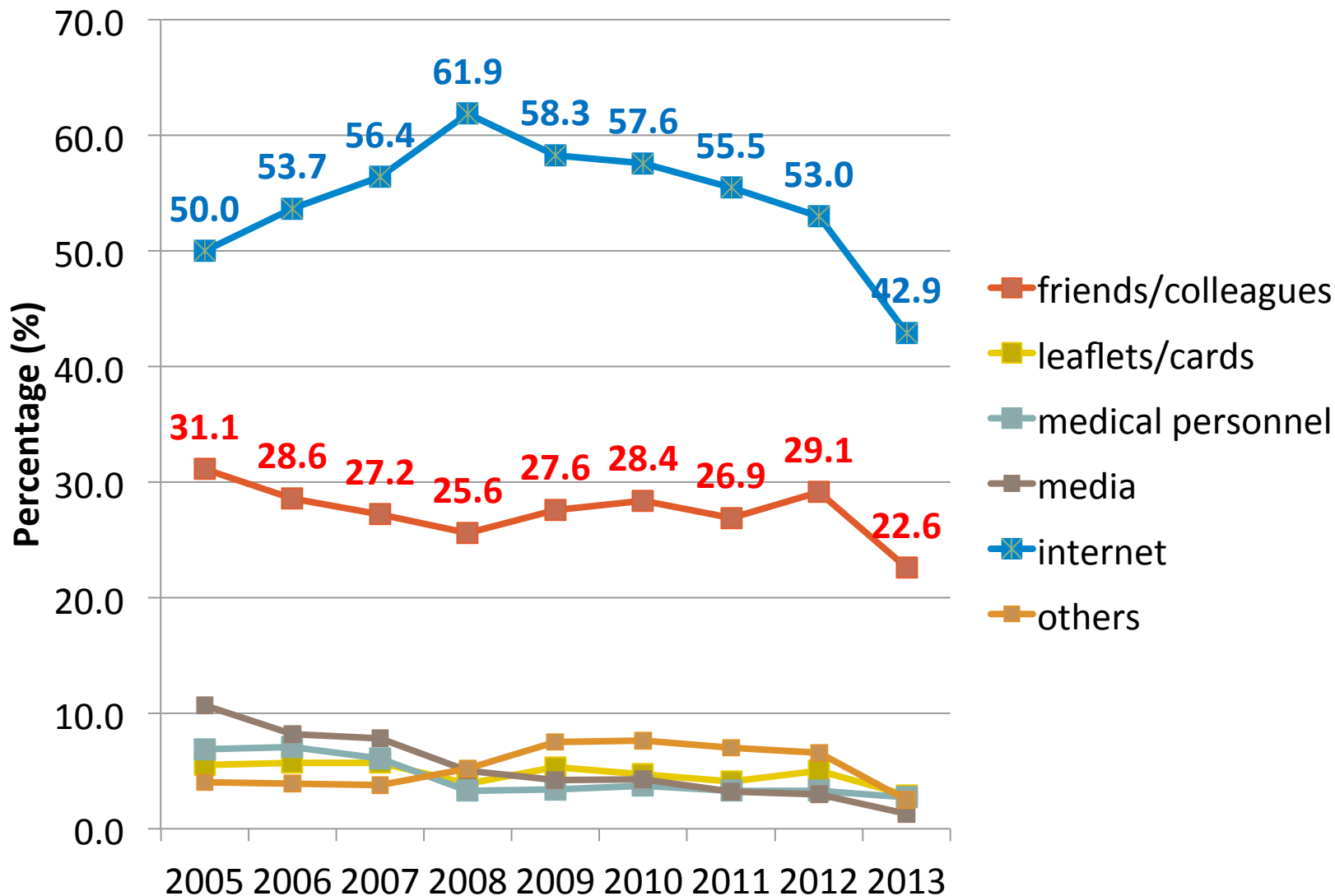
# RAPID + CLIENTS BY TESTING HISTORY – 2009 – 2013



# ALL CLIENTS AND RAPID + BY SELF RISK ASSESSMENT - 2013

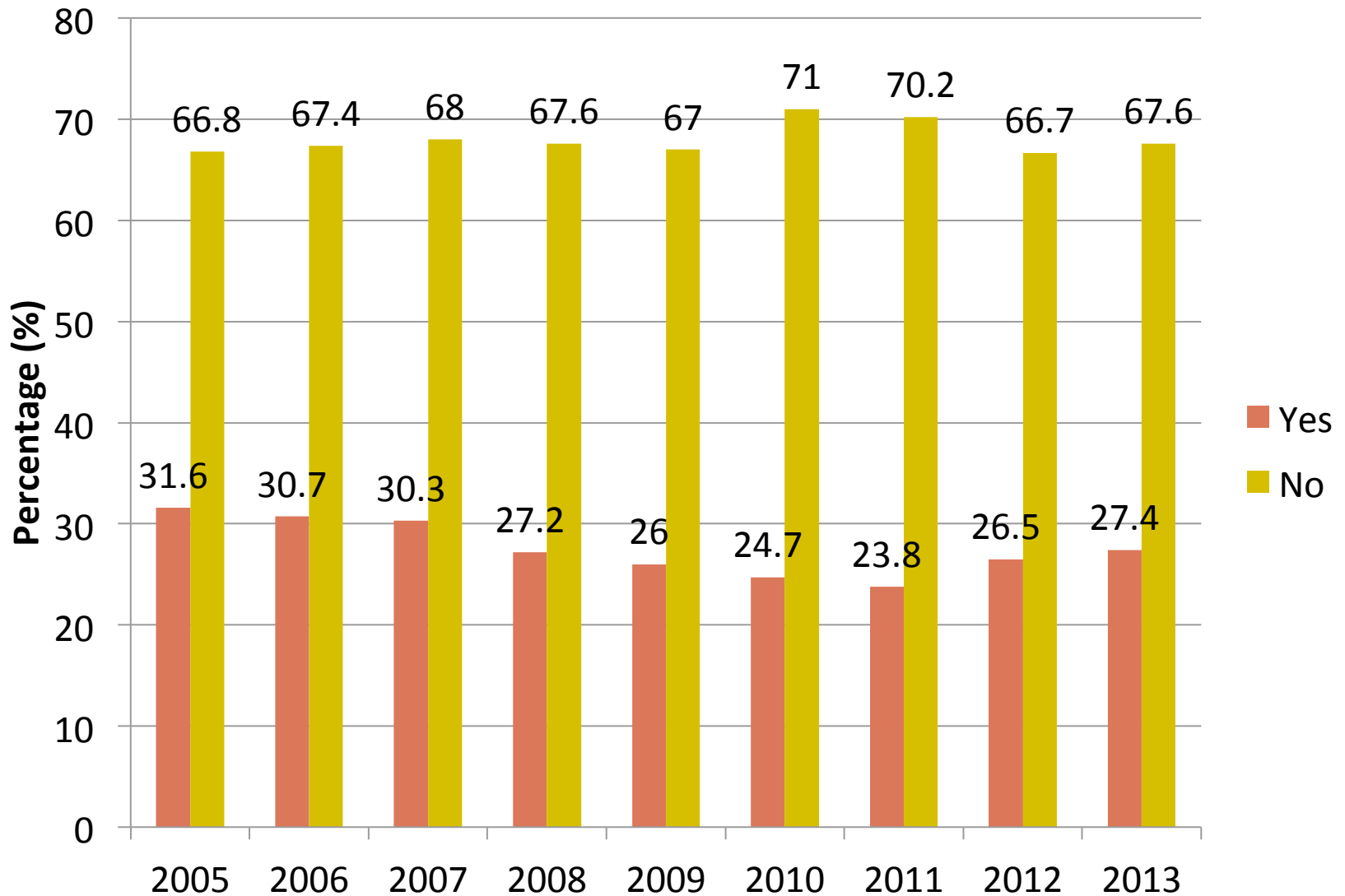


## INFORMATION ABOUT ATS – 2005 TO 2013

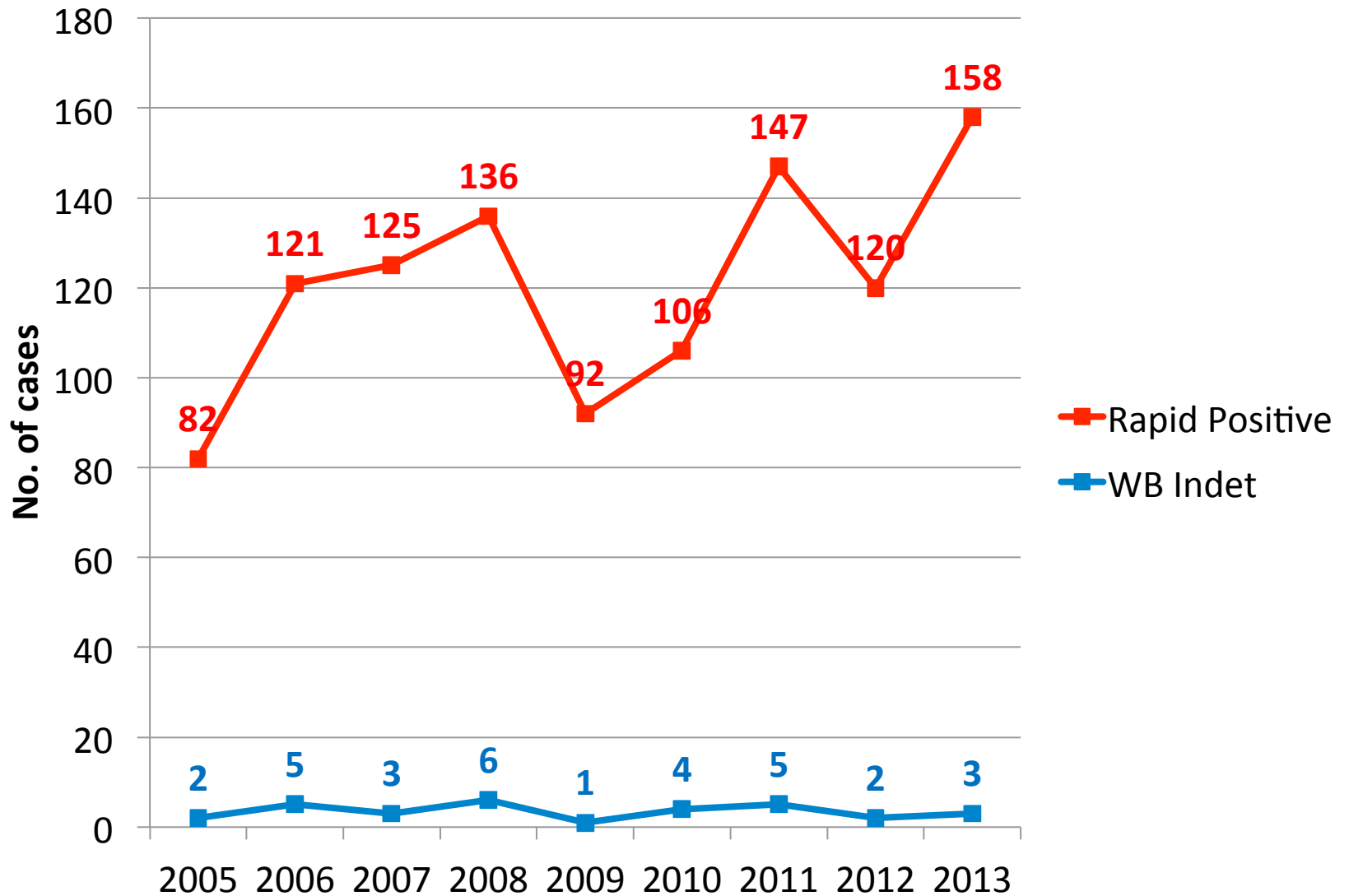




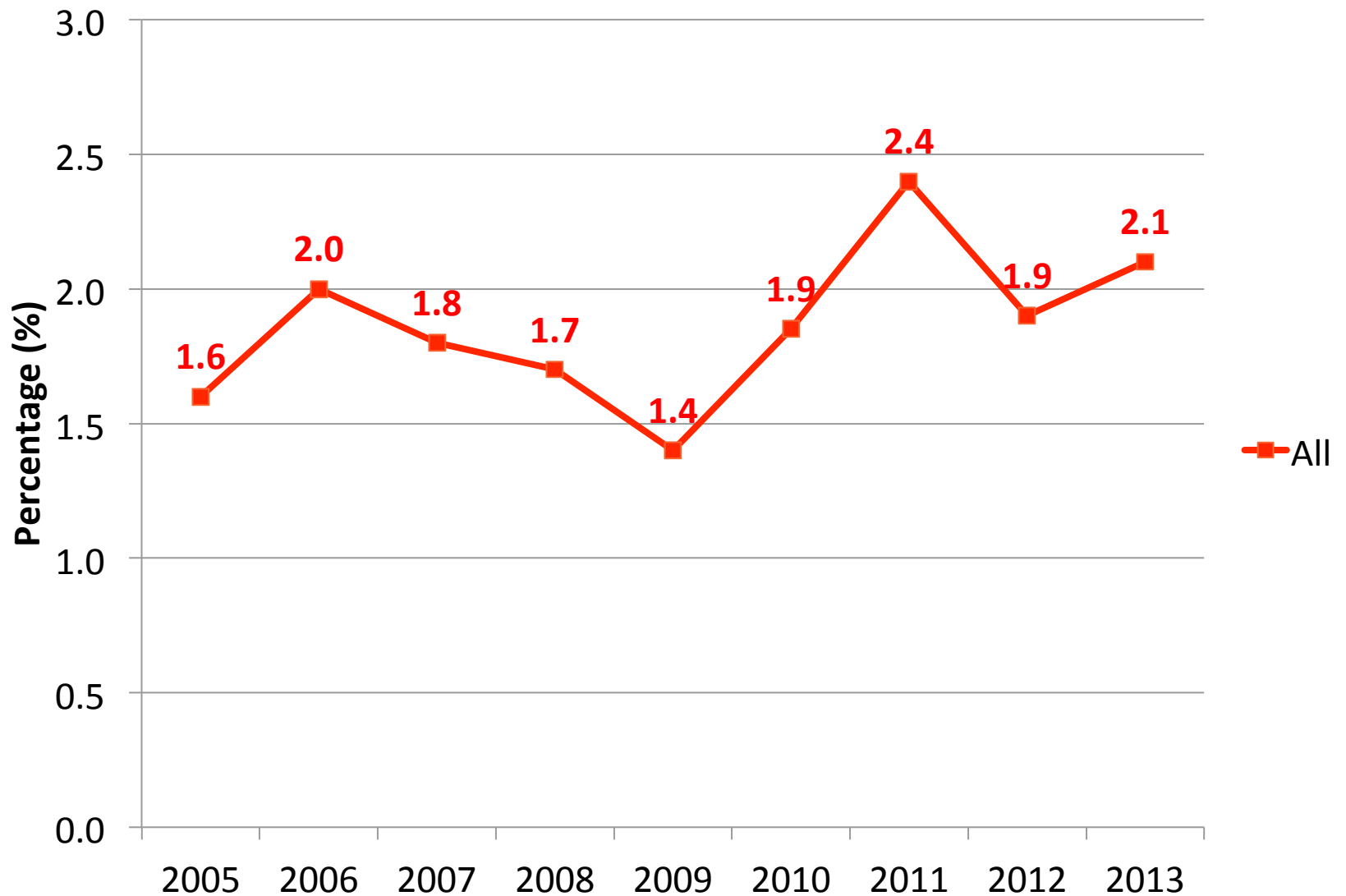
## TESTING WITHOUT ANONYMITY – 2005 TO 2013



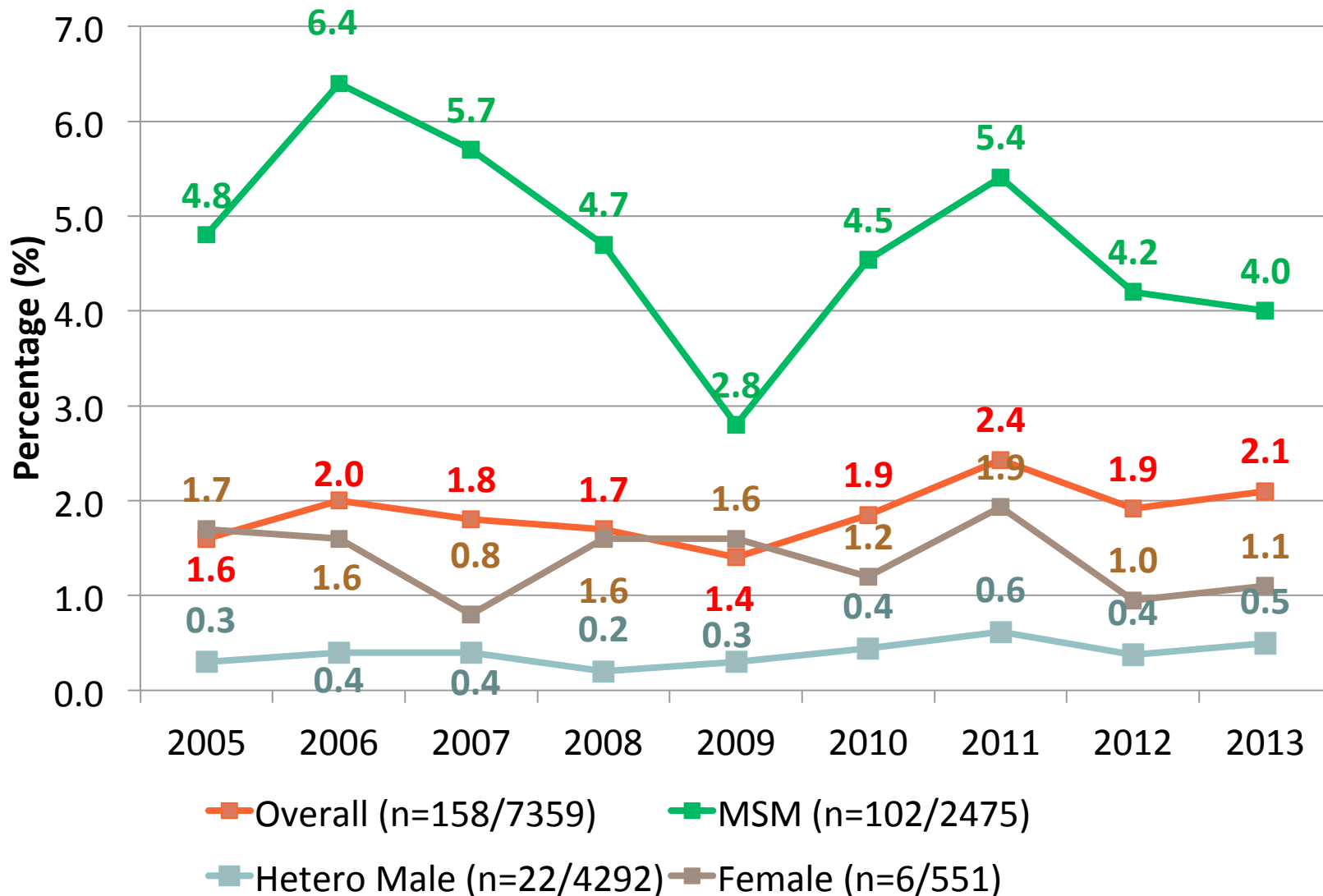
# HIV RAPID + FROM 2005 TO 2013



## HIV RAPID + (%) FROM 2005 TO 2013

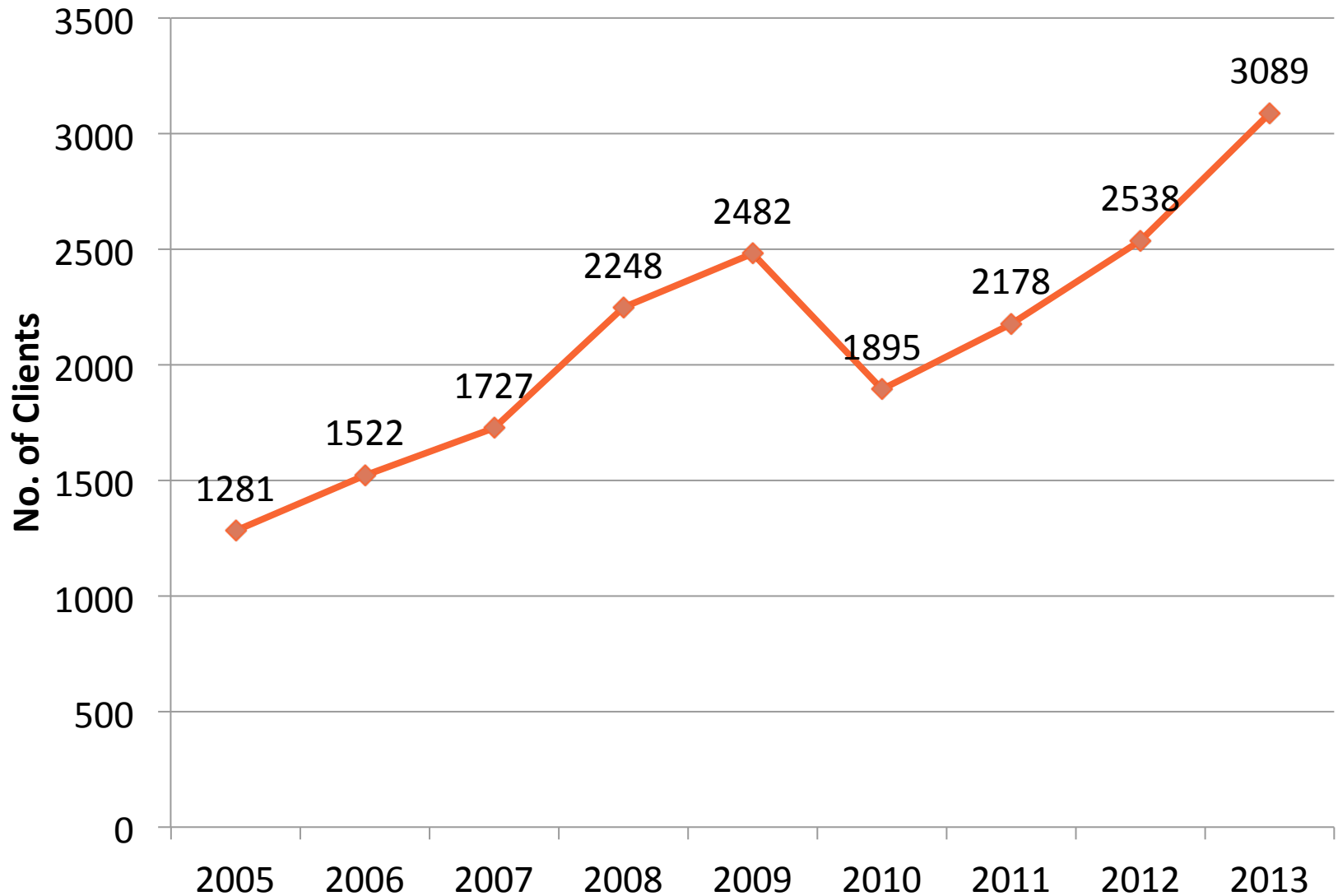


# HIV RAPID +\* BY SEXUAL ORIENTATION – 2005 TO 2013



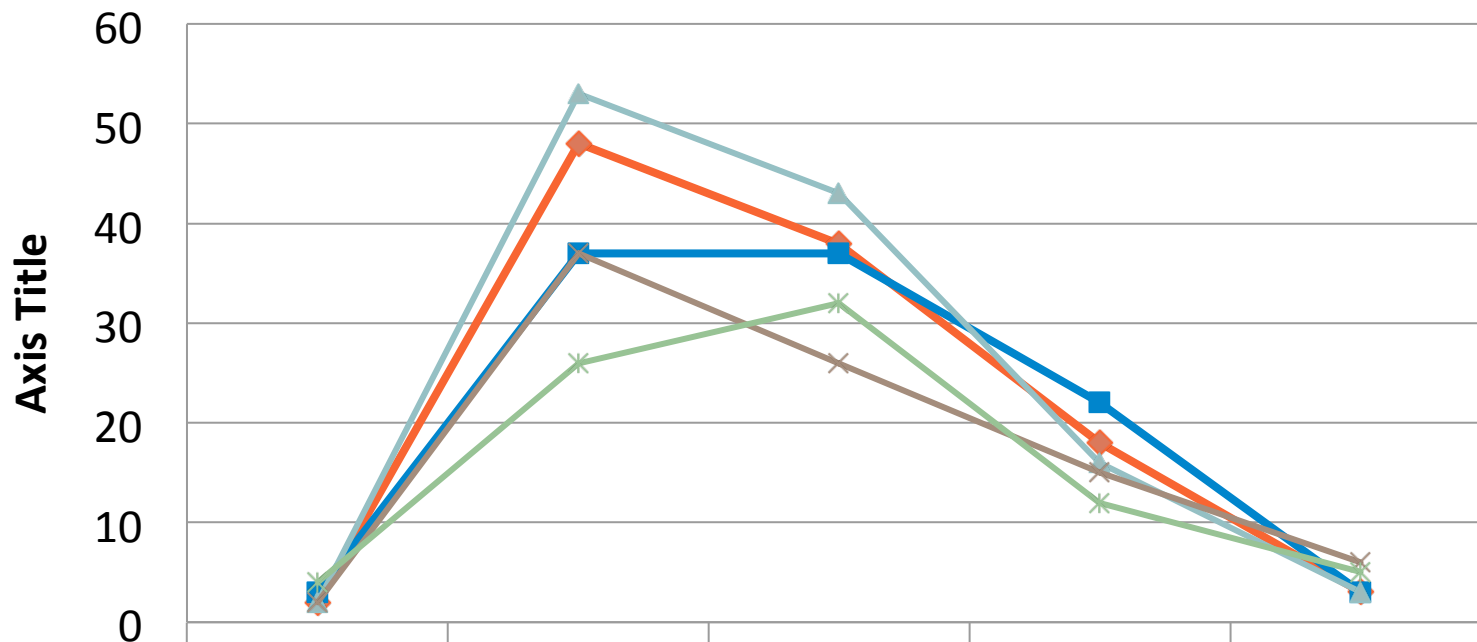
\*Includes known positive cases

## MSM CLIENTS – 2005 TO 2013



\*MSM clients account for 37% of all tested cases in 2009

# RAPID + AMONG MSM CLIENTS BY AGE GROUP - 2009 - 2013



	<20	20-29	30-39	40-49	50 and above
◆ 2013	2	48	38	18	3
■ 2012	3	37	37	22	3
▲ 2011	2	53	43	16	3
✕ 2010	2	37	26	15	6
* 2009	4	26	32	12	5

N=117

N=86

N=79

## SYPHILIS RAPID TEST RESULTS

	2006	2007	2008	2009	2010	2011	2012	2013
# of Syphilis Test Done	244	1286	1288	1640	849	1320	1511	1789
Rapid Syphilis +ve	4	13	9	15	8	13	25	11
Rapid Syphilis +ve & Rapid HIV +ve	0	0	1	2	1	1	2	1
Positivity (Syphilis)	1.6	1.0	0.7	0.9	0.9	1.0	1.7	0.6

\*Syphilis test was introduced in Sep 2006

## SYPHILIS TEST RESULTS (2013)

	# of Syphilis Done	Rapid Syphilis +ve	Prevalence (Syphilis)	Rapid Syphilis +ve & Rapid HIV +ve
Heterosexual	861	1	0.1%	
Homosexual	814	9	1.1%	
Bisexual	106	1	0.9%	1
Unknown	8	0	0%	

