



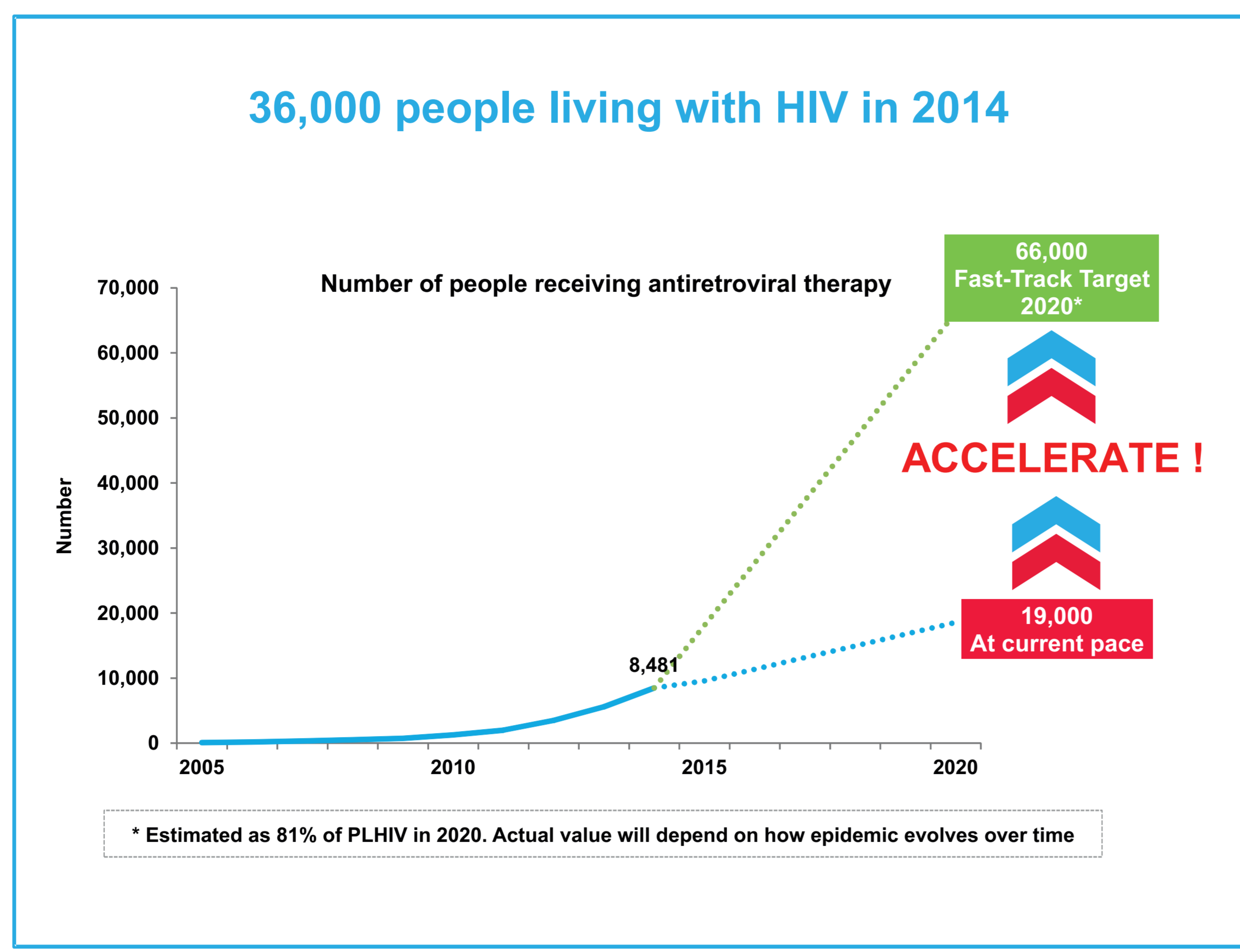
# Country Poster

2015

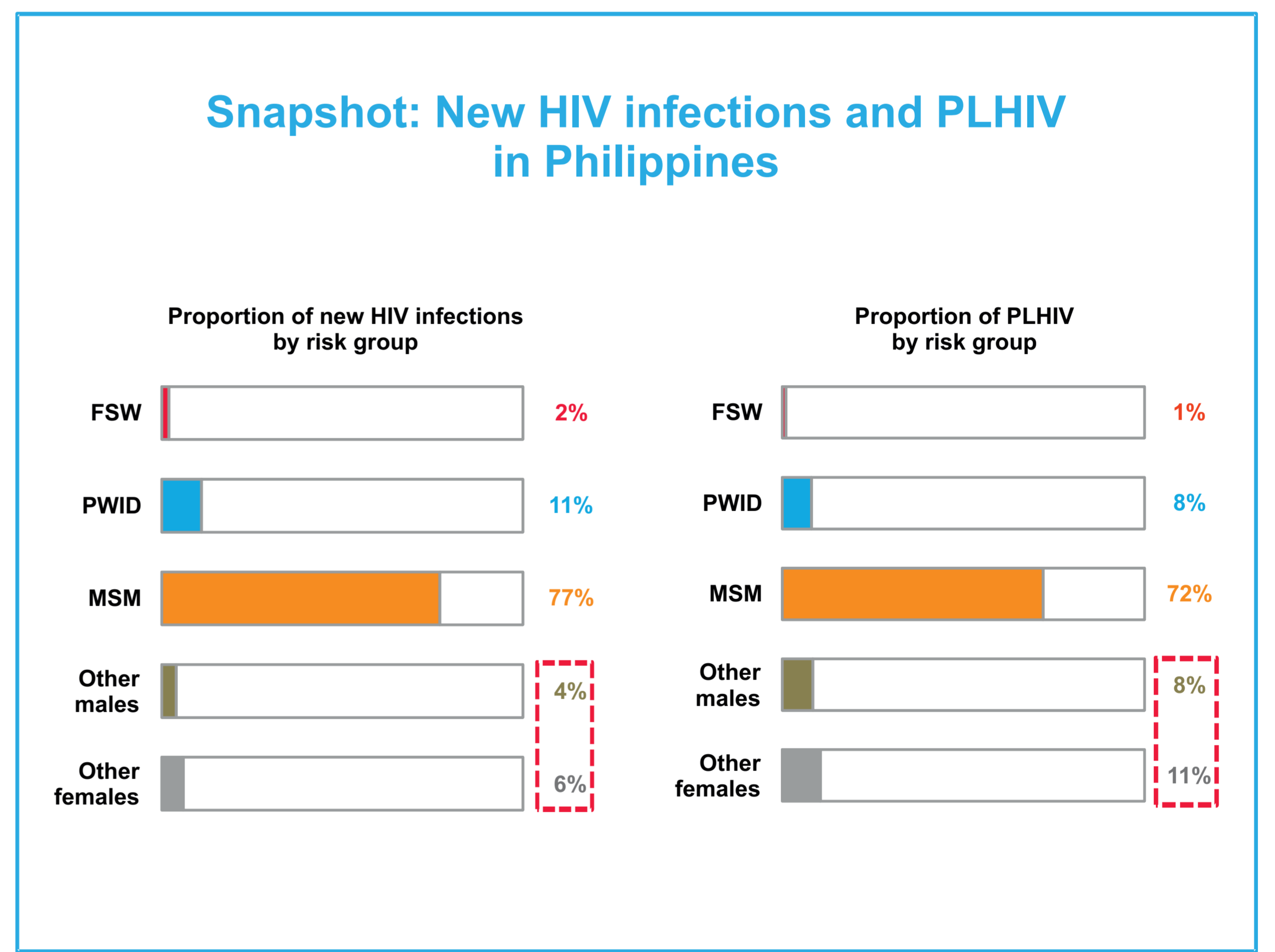
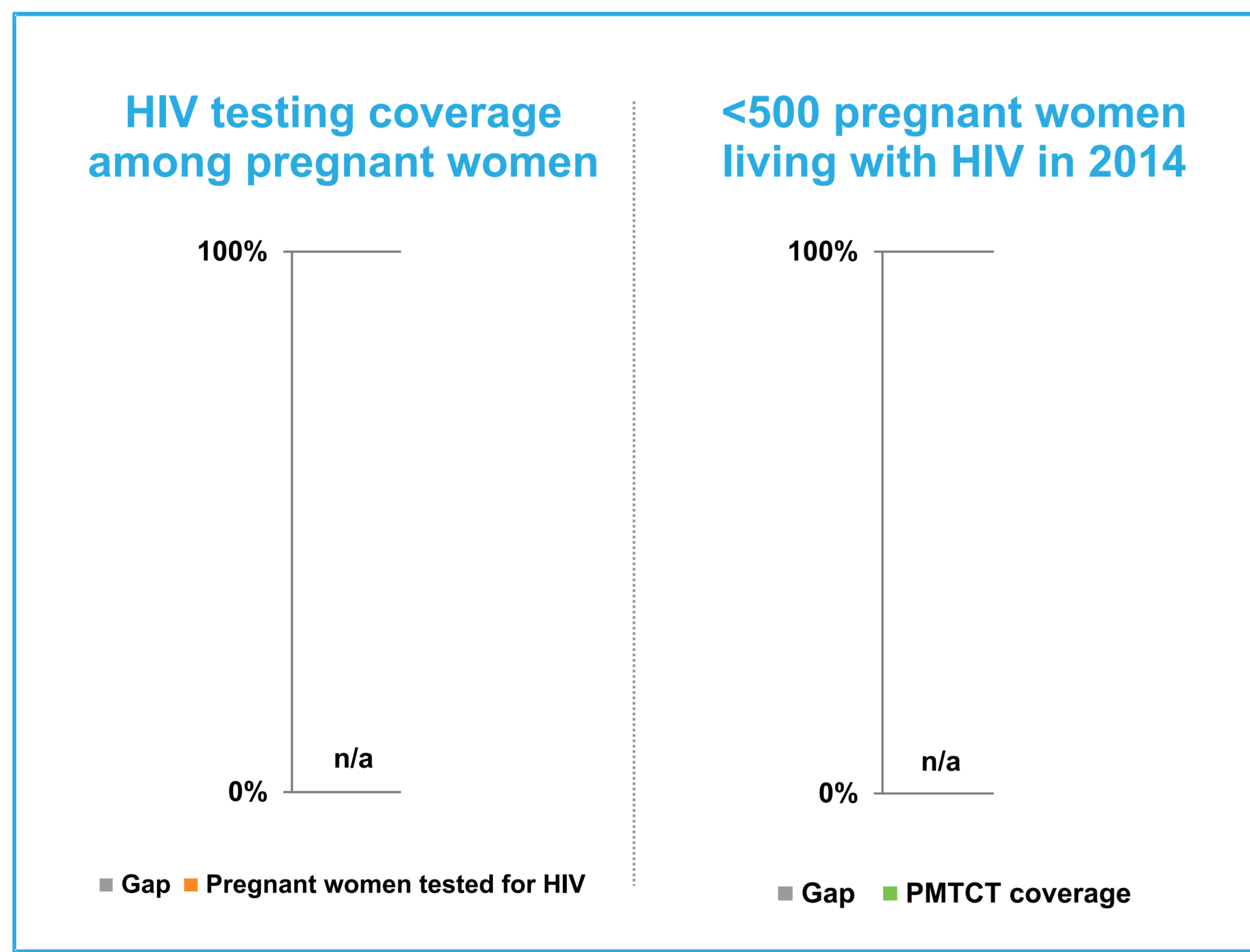
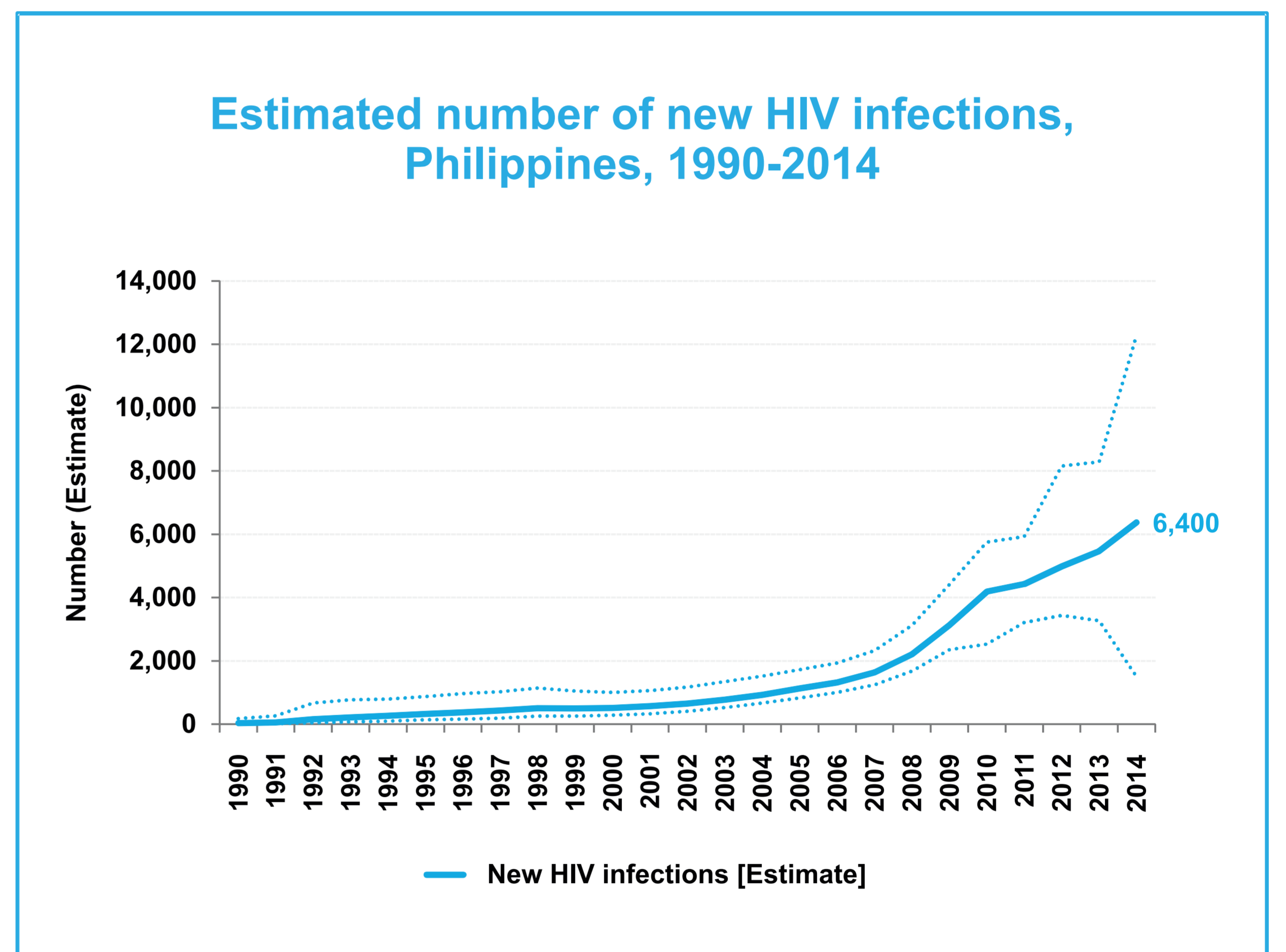
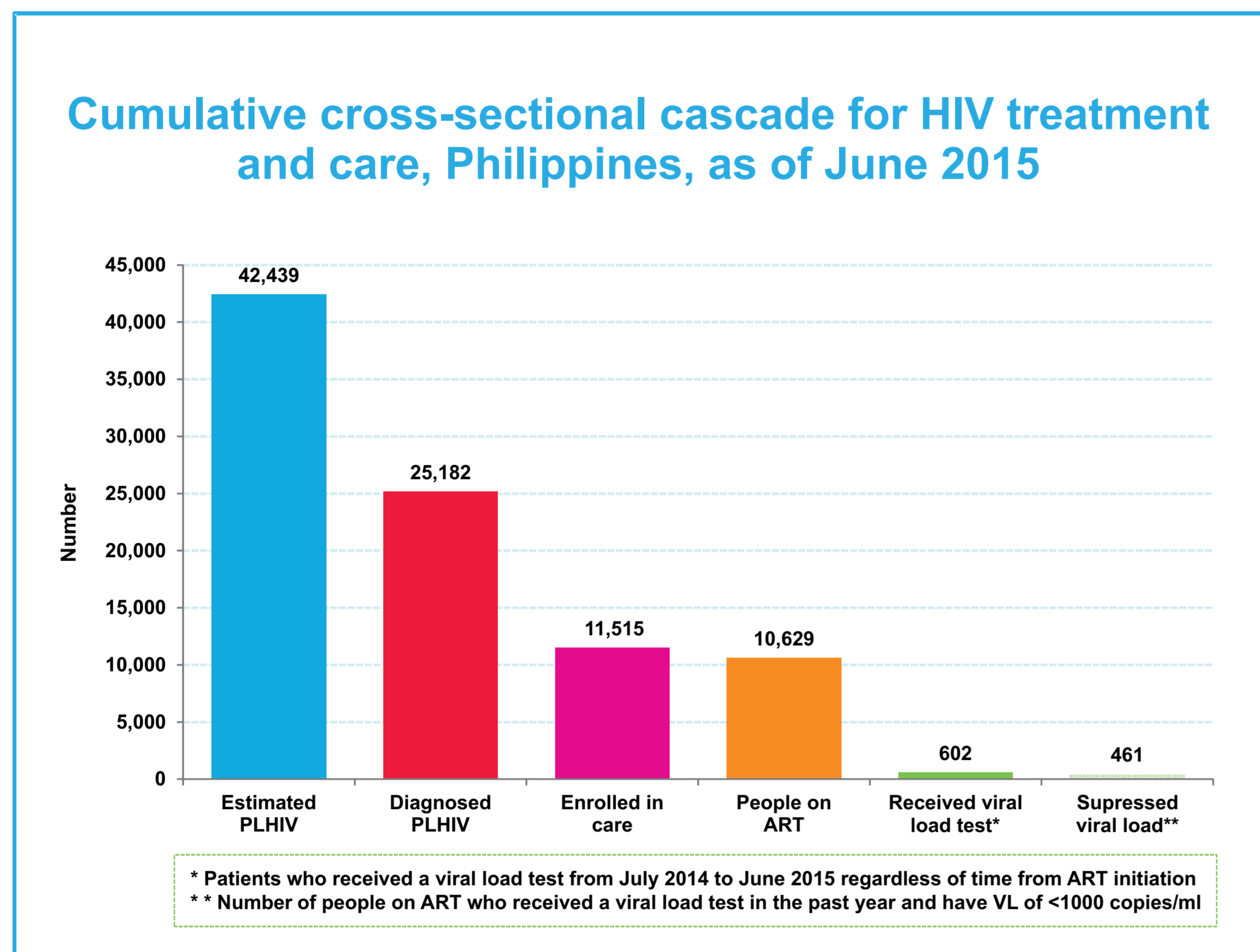
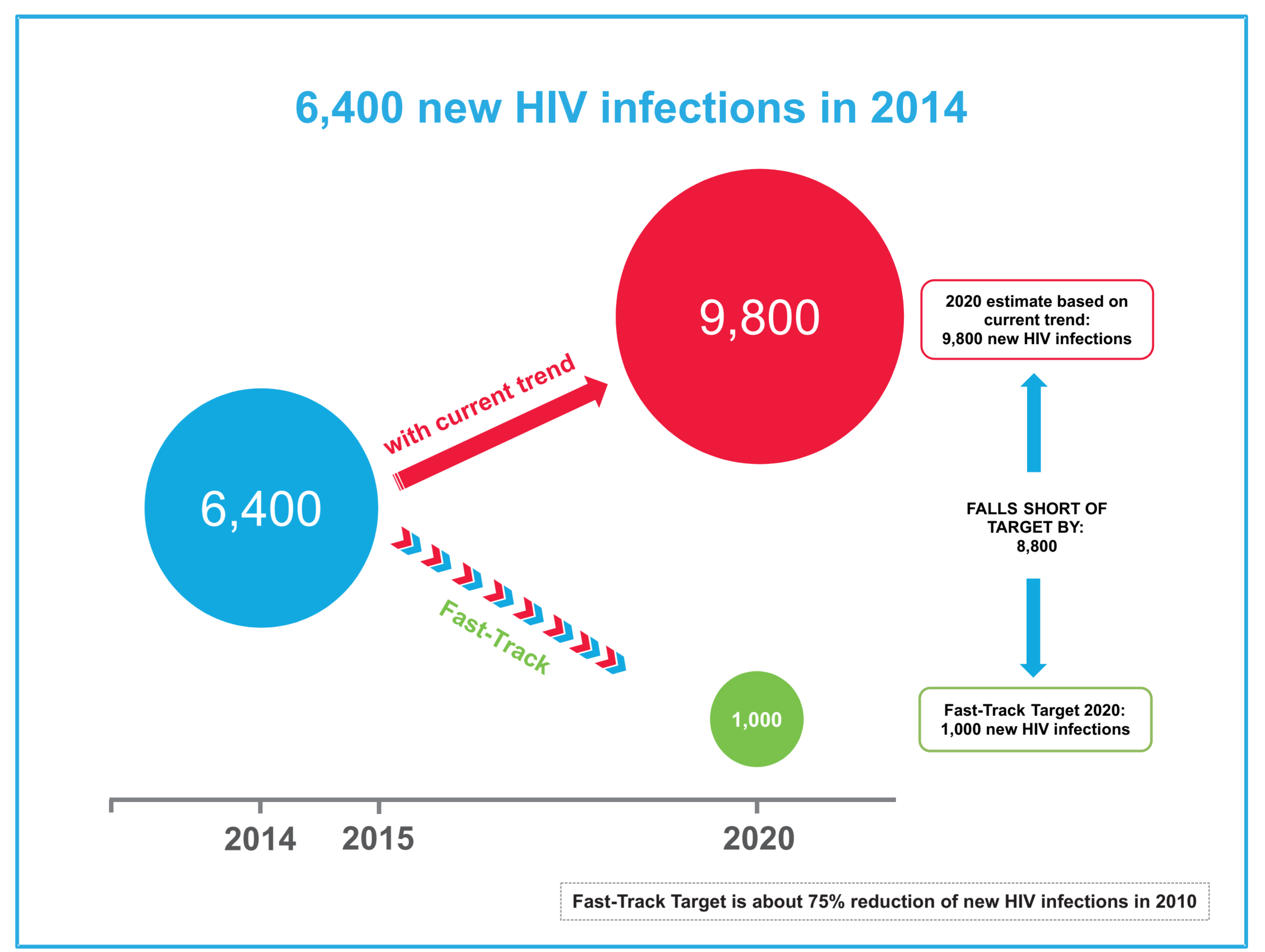


# Philippines

## Treatment



## New HIV infections

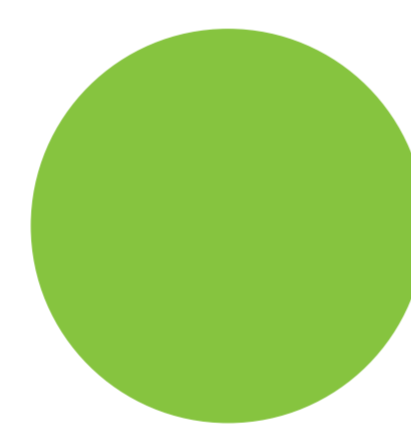


## Zero discrimination

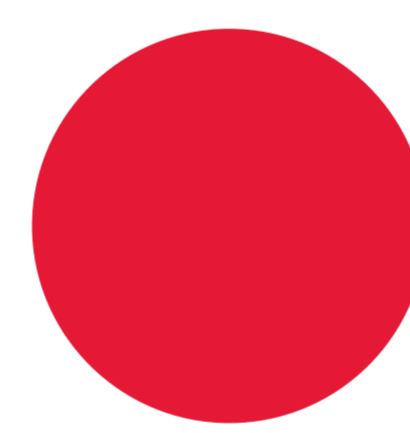
Criminalization of same-sex sexual activities



Maintains compulsory detention centre for PWUD



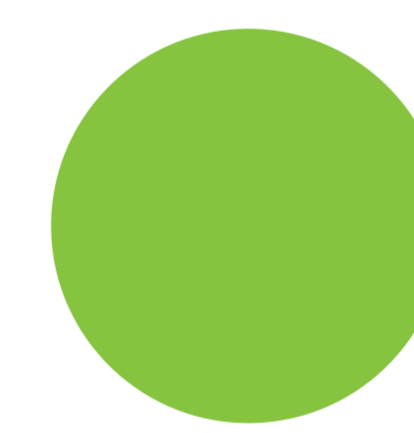
Criminalization of sex work



Criminalization of HIV transmission or exposure



Maintains HIV-related restrictions on entry, stay and residence



● Has punitive law  
● Does not have punitive law

## Civil society perspective (NCPI 2014)

### Access to justice



Legal services (legal aid or other)



NHRI or other mechanisms

### Civil society perspectives/ratings:

Laws and policies in place to protect and promote HIV-related human rights

2013 Trend (2009-2013)

7/10



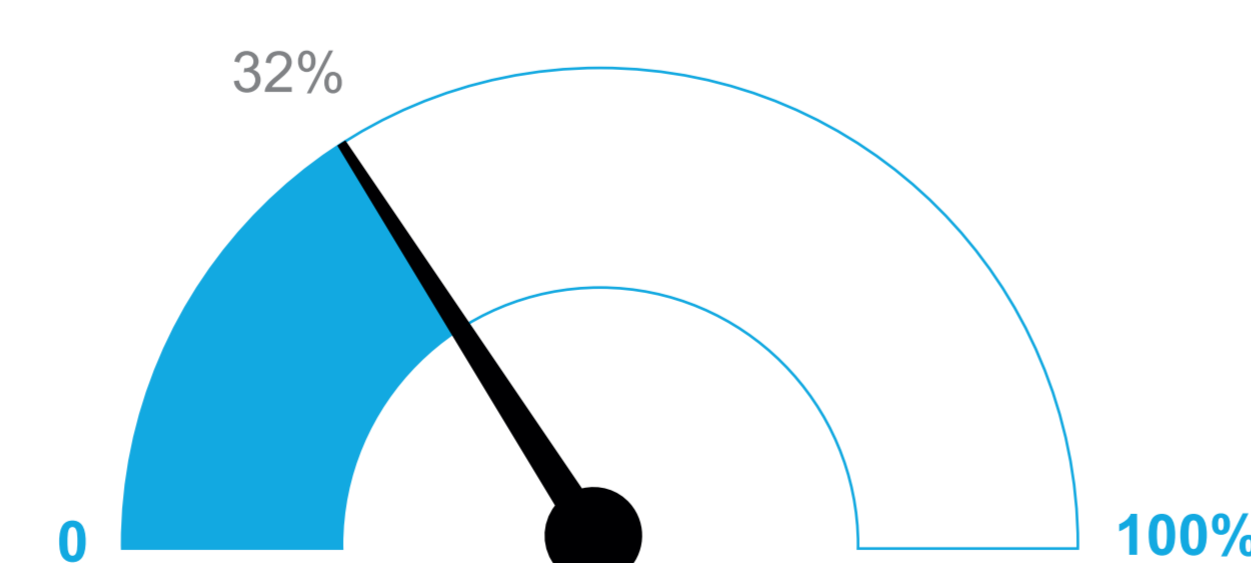
Efforts to implement human rights-related laws and policies

5/10



### Stigma Index (2009)

Percent of PLHIV respondents who avoided going to a local clinic when needed because of HIV status



## Law and policies that enable independent consent for young people to access HIV testing and related services



No/unclear/no information

### Intimate Partner Violence

Percent of ever-married or partnered women aged 15-49 who experienced physical or sexual violence from a male intimate partner in the past 12 months

No information available

## City focus

